

**The Brihanmumbai Electric Supply  
and Transport Undertaking  
(Of The Brihanmumbai Mahanagarpalika)**



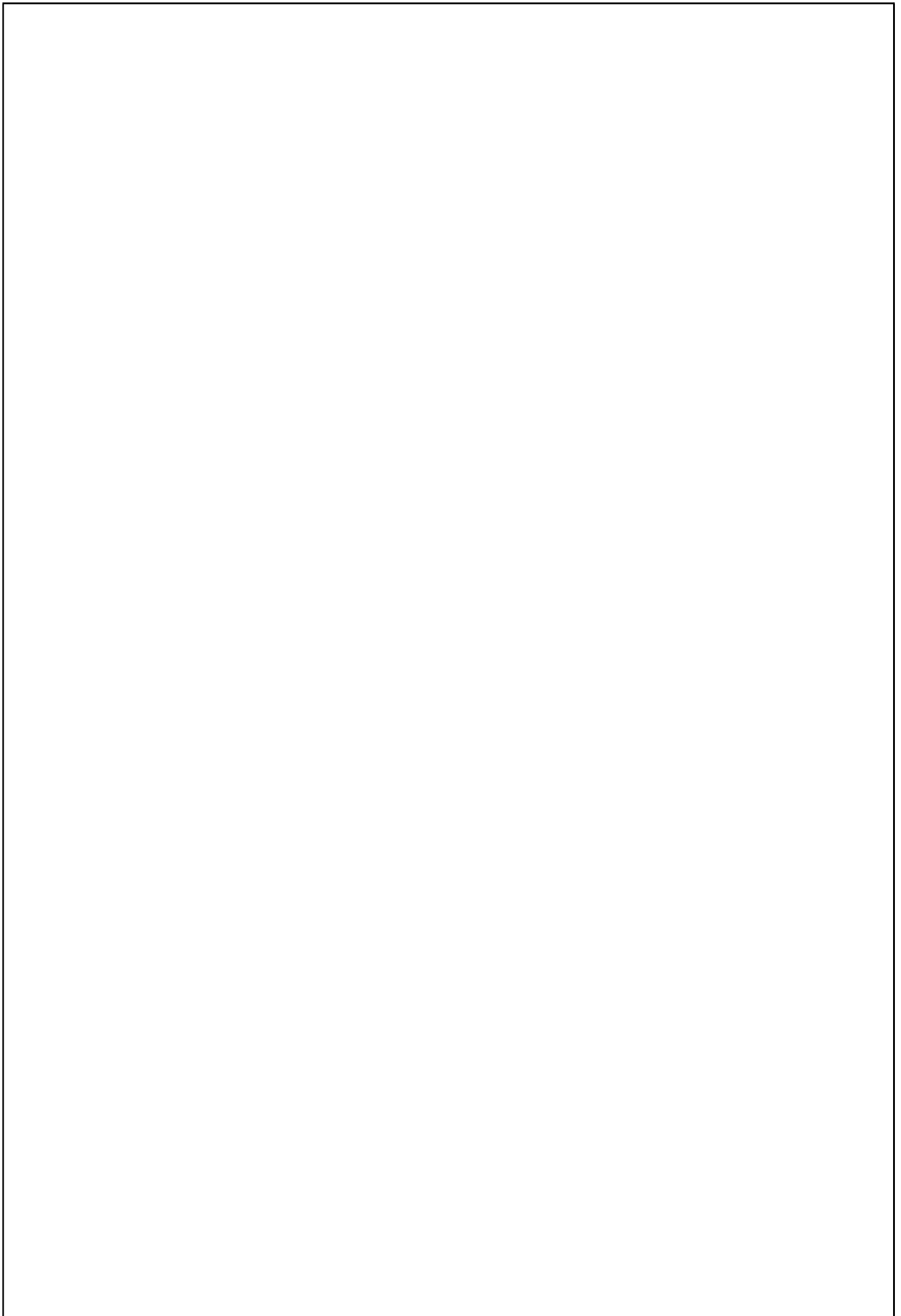
**DISASTER MANAGEMENT PROTOCOL**

**Booklet 2022 – 2023**

**(Electric Supply Division)**

**INDEX**

<b><u>Sr.</u></b>	<b><u>Description</u></b>	<b><u>Annx.No</u></b>	<b><u>Page No</u></b>
1	Introduction	--	1 to 7
2	Operations & Maintenance Zones & MCGM Wards Map of Mumbai	I	8
3	Map showing power supply arrangement for BEST Undertaking	II	10
4	List of officers of Operations & Maintenance Division	III	12 to 14
5	A Grade officers ( A 4 & A 5 ) residing in our area of supply	IV	15
6	List of Essential feeders	V	16 to 24
7	Booking of A & B Grade officers at various receiving stations during emergencies / Disaster of large magnitude	VI	25 to 26
8	Electric Supply – Address & Telephone Numbers of Senior Officers ( Grade A 3 & above )	VII	27 to 32
9	Address & phone nos. of Receiving Sub-stations	VIII	33 to 37
10	Ward Wise Identified Low Lying Flooding Prone Areas	IX	38 to 39
11	The reporting protocol for interruption of Electric supply due to System Failure / Disaster	--	40 to 41
12	Off Supply Complaints Operations & Maintenance Division	--	42
13	Customer Care Division (Complaints ) Street Lighting (Complaints )	--	43



Brihanmumbai Electric Supply and Transport Undertaking (BEST) distribute electric supply within the old city limits of Mumbai and runs Public Transport in the Greater Mumbai region. This write up is about the Disaster Management Plans for the Electric Supply Distribution.

## 2. Introduction :

BEST gets all the power from M/s. Tata Electric Company at 110 kV, 33 kV or 22 kV and distributes the Energy from Colaba to Haji Ali / Byculla / Mumbai Central in South zone and Mumbai Central / Byculla / Haji Ali to Sion, Chunabhatti / Mahim in North zone as shown in Annexure – I. A map showing the power system arrangement is attached as Annexure –II. The statistical data of Receiving Substations, Distribution Substations, Cables Consumers etc. in Electric Supply Division as on 31<sup>st</sup> March 2022 is as follows :-

Description	Numbers
No. of Receiving Substations	64
No. of Power Transformers	153
No. of distribution substations	2470
No. of distribution transformers	3329
Length of cables (EHV, HV and LV cables in kms)	11824
No. of Consumers ( in Lacs )	10.47

To avoid failure of electric supply even for few minutes, BEST has evolved very systematic and time-tested procedures and arrangements for attending to all types of breakdowns.

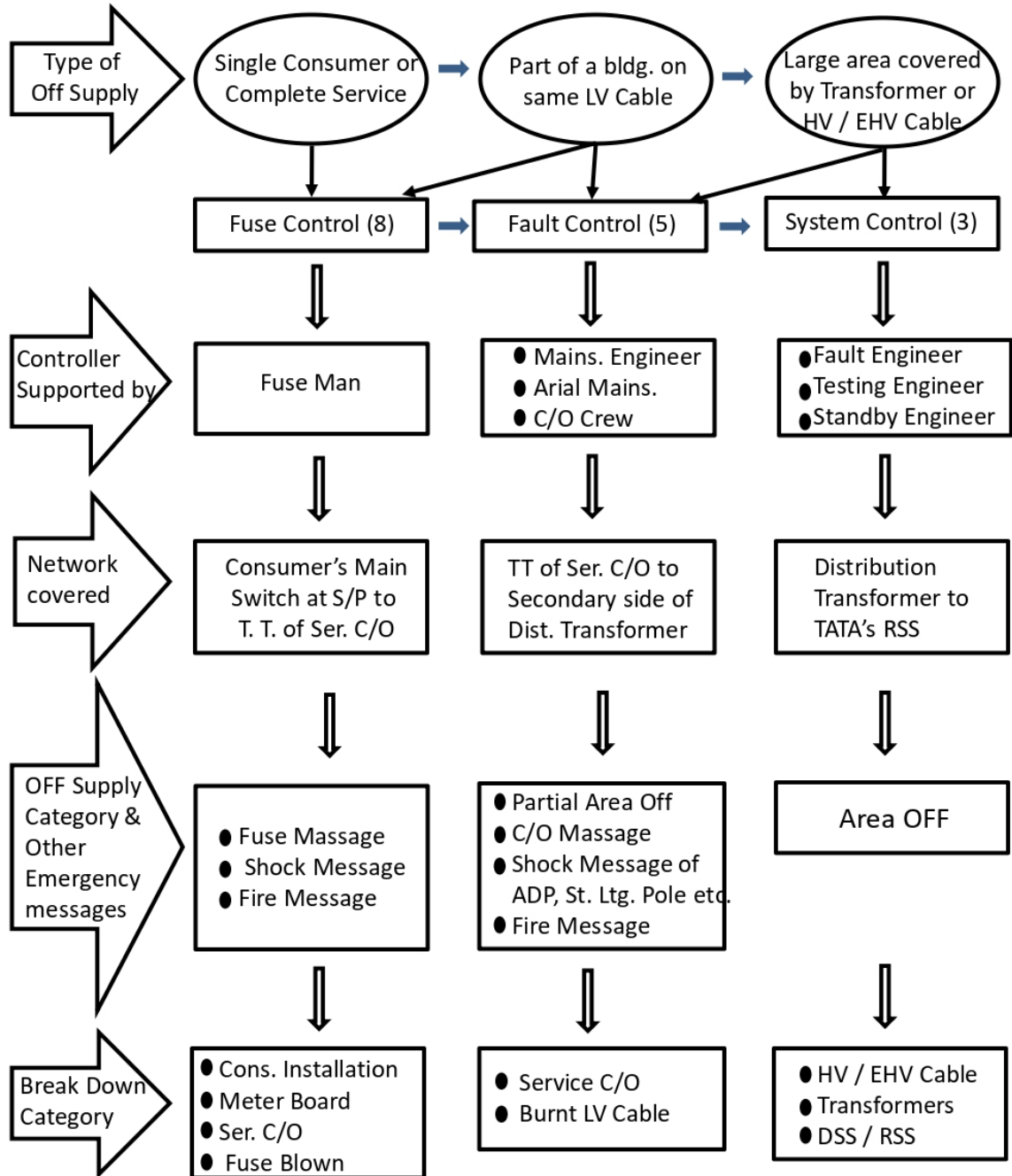
It is our experience that major floods occur in Mumbai once or twice in some years, when there will be innumerable breakdowns. In such cases, we divert officials from other non-emergency departments to deal with the situation. The BEST operation and maintenance system is capable of dealing with all the increased breakdowns, though the restoration of supply will take some more time during disaster situation such as flood & fire situations. Also, in cases such as floods, fire etc. there will be contradictory requirement of switching off supply to the areas affected by shocks, fire etc. and restoring supply when these conditions subside. Hence the nature of actions to be taken varies from situation to situation, and calls for discretion and judgment by experienced engineers. With the present set up of control centers and operating personnel with vehicles, BEST is in a position to deal with these situations if necessary by diverting additional staff from non-emergency departments. This is possible, because Electric Supply Branch ensures that all the technical personnel are trained to be emergency jobs, by a flexible transfer policy.

For enabling the control centers to arrive at the correct decision on action, it will be highly beneficial if the consumers are in a position to give information on the extend of supply failure, i.e. whether only their building is affected, or more buildings are affected or the entire area is affected. If the consumer gives wrong information, it may delay the restoration, as the different section personnel may get deployed for the job initially. In case of tripping in receiving stations, the controls will automatically get information through the SCADA system, and Fault Engineer will move into action.

3.0 Coordinated functioning of various Control Rooms For faster restoration of Electric Supply

We have three types of Control Rooms viz. System / Supervisory Control / ZCC, Fault Control & Fuse Control. The schematic showing the movement of OFF Supply messages through this Control Rooms, to the respective section which have to take actions for restoration of supply is as follows:-

Coordinated functioning of various Control Rooms For faster restoration of Electric Supply:-



From the operational point of view, the Operation & Maintenance department of the Electric Supply Division of BEST is divided into five Zones viz. South (S) Zone, Central (C/S) Zone, North West(N/W) Zone, North East (N/E) Zone and Central North (C/N) Zone.

The main control rooms of Electric Supply Division are divided mainly into 3 controls, i.e. System Control in South zone covering the entire operations of the South & Central South zone from Colaba to Mumbai Central / Byculla / Haji Ali and Supervisory Control in North zone covering the entire operations of the North West, North East i.e. Haji Ali to Chunabhatti / Mahim / Wadala / Sion & Zonal Control Center (ZCC) covering the entire operation of Central North zones i.e. from Byculla – Haji Ali-Mumbai Central to Lalbaug-Worli, Byculla. These three are the highest Control Centers, but as a routine, they look after only High Voltage system operations / breakdowns and reporting to management on all aspects of the system by taking input from other controls downstream.

These Controls are manned by the Super Controller (Superintendent / Asst. Engineer ) / System Controller & Supervisory Controller (Dy. Engineers) respectively. They are assisted by Assistant Controllers (Charge Engineers). Both the Controllers & Assistant Controllers are working in all the three shifts round o' clock. System / Supervisory & ZCC Controller mainly deals with the communication with the Fault Engineers and Mains Engineers and reporting to Sr. Officers. Controller / Asst. Controllers are carry out the duties of receiving messages, writing messages, computerized reports and follow up with the operational staff and taking feedbacks. The Offices of Operation & Maintenance Departments are situated nearer to these Control Rooms in both the zones.

For restoration of Electric Supply, we have 8 (eight) fuse Controls, 5 (five) Fault Controls and 3 (three) System / Supervisory / Zonal Control Centers established and all details along with locations and telephone nos. are furnished.

All types of emergencies involving Receiving Sub-stations and Distribution Sub-stations are conveyed to the Fault Engineers working in all the three shifts through System Control, Supervisory Control & ZCC.

All other breakdowns and problems in the low voltage systems like supply failures, shock, fire, restoration of the off supply areas by giving temporary supply etc. are attended by Mains Engineers who are deployed through Fault Controls in all the three shifts. The Fuse Controls deploy Fuse men who can attend to supply failures due to blowing of fuses at meter rooms of the consumers, and problems connected with meters. They also take action in case of fire, shock, water falling at Service position etc. on the meter boards and in the installation. All the control rooms have the system of logging all the messages received and feedback of attending the message is also recorded in the respective controls. There is a system of reporting all the major messages to the senior officers to the Electric Supply Branch, every morning and also during the working days and holidays round the clock.

For cases of OFF Supply durations exceeding 2 hours, there are well defined instructions for escalating the matter to senior officers, which are as follows :-

OFF Supply duration	Escalation
2 to 4 hours	Concerned Assistant Engineer or Superintendent Engineer of respective O&M Department
4 to 6 hours	Divisional Engineer of respective O&M Department
Above 6 hours	Deputy Chief Engineer of respective O&M Department and other senior officers

The telephone numbers of various control centers, for electric supply restoration and emergency messages jobs of BEST, are given below. The last 4 digit numbers of these control centers are unique and hence can be remembered easily by contacting personnel.

**South Zone : (Colaba to Mumbai Central / Byculla / Haji Ali)**

System Control		22083788, 22082875, 22067893, 7304456077 (SMS)	
Fault Control, Pathakwadi (S/CS)		22066611, 22066661	
Fuse Control	Pathakwadi	22084242, 22084243, 22066351, 7208934692, 8828847565 (SMS)	
	Colaba	22184242, 22156749, 8828871649 (Whatsapp), 7304456083, 7208964089 (SMS)	
	Masjid	7208940526, 23474242, 7208940525, 23454297, 7208964091 (SMS), 7208940490, 23474010, 8828871650	
	Tardeo	23094242, 23018169, 23094242, 8828871647, 72089464092, 7304456090 (SMS)	

**North Zone : (Parel/Worli/Haji Ali/Sewree to Sion Chunabhatti/Mahim/Dharavi)**

Supervisory Control		24186200, 24145888, 7304456079 (SMS), 8828830288 (Whatsapp)	
Fault Control	Dadar (N/E)	New Mahim (at Mahim RSS) (N/W)	Dharavi (at Dharavi Bus Depot)
	24146611, 24146683, 7208992913, 7208992914, 8828830283	24326611, 24326612, 24326613, 8828830285 (Whatsapp), 8097585579 / 8097585161	8657448054, 8657448055, 8657448059, 8828830284, 8097585485, 8828871651 (Whatsapp)
Fuse Control	Dadar	24124993, 24124242, 24124673, 24123162 7208992912 (SMS), 7304456091, 8828847563	
	Mahim	24444242, 24314242, 24314240, 8657448060, 8657448061, 8828871657 (Whatsapp)	
	Worli	24954242, 24953363, 7208964294, 8828847567 (Whatsapp)	
	Suparibaug	24114242, 24161217, 24117736, 7208934728 7208934730, 8828871641 (Whatsapp)	

**Central North Zone : (Byculla / Haji Ali / Mumbai Central to Lalbaug / Worli)**

Zonal Control Centre North ZCC (CN)		24975888, 24962122, 24962133, 24962125 7208964101, 7208992921, 7208992923, 8827730286(Whatsapp)	
Fault Control, Dadar (CN)		24186611, 24117753, 24117754, 7208992927, 8828847568 (Whatsapp)	
Fuse Control	Worli	24954242, 24953363, 7208964294, 8828847567 (Whatsapp)	
	Suparibaug	24114242, 24161217, 7208934728, 7208934730, 8828871641 (Whatsapp)	
BEST Twitter Account :-		@ my BEST Electric	

#### 4.0 **Contingency Plans for major failures :**

The Contingency Plans for faster restoring the electric supply in case of all the EHV feeders and Power Transformers, showing the network operations to be carried out, are well documented and are being updated time to time.

In case of major failures brought about by man-made or natural disasters, the priority will be for safe guarding the Distribution System to prevent shock, fire, etc. by switching off and isolating switch points wherever required, and restoration of supply to essential consumers like hospitals and municipal pumping station. A list of such essential feeders / consumers is attached as **Annexure – V.**

#### 5.0 **Preparations prior to monsoon seasons :**

As a precautionary measure, prior to start of the monsoon season the various activities are being carried out by Operation & Maintenance Department, in order to safeguard the Receiving Substation (RSS) and Distribution Substations (DSS) and the equipments therein. The list of such activities is given below:-

- i. As regards the Pillars, Distribution Transformers, Distribution Substations and Receiving Substations in low lying areas :
  - a) We have identified flooding prone areas and roads in our area of supply. In such areas when water levels rise, electric supply is disconnected selectively in order to avoid loss of life due to electrocution. In this situation, continuous monitoring of water level is being done by our Controls in co-ordination with MCGM and Fire Brigade.
  - b) After the water level recedes, electric supply to such areas is being restored in a gradual manner. List of identified low lying flooding prone areas is attached vide **Annexure IX.**

In case of dilapidated substations which require repairs, are monitored continuously and in case of substation failure, alternate arrangements of supply restorations are made.

- ii. Roof cleaning of RSS and DSS
- iii. Inspection of storm water drains of RSS and letters to MCGM for cleaning the same, if necessary.
- iv. Inspection of DSS where in previous year the problem of water leakages were observed and inform the same to Civil Engineering Department of the Undertaking.
- v. Provision of tarpaulin, Bakelite sheets above the equipments wherever necessary.
- vi. Providing heaters in RSS where there is a problem of moisture absorption in the bus bar compartment of switchgears, to avoid flashovers.
- vii. Advertisement in the local newspapers for precautions to be taken during the monsoon season of their installations and service position and the necessary information regarding the contact personnel about the registering the complaints to controls in their respective areas.

#### 6.0 **Standby arrangement of officers for emergency duties :-**

The Electric Supply Division is presently headed by Assistant General Manager (Electric Supply). He reports to the General Manager of the Undertaking. AGM(ES) is assisted by 4 Chief Engineers viz. Chief Engineer (Maintenance & Works), Chief Engineer (Customer Care), Chief Engineer (Regulatory) & Chief Engineer (Planning). Most of the technical personnel in Electric Supply Branch get trained for emergency and maintenance activities. All the Senior Officials of Electric Supply branch of BEST, especially those heading the Operation and Maintenance Departments under them, are available for assistance for round the clock and as we say in BEST, “ all officers are on duty for 24 hours “. The names and telephone numbers of officers of Operation & Maintenance departments, directly concerned with the restoration of supply in case of breakdowns and emergencies, are given in **Annexure – III.**



The names and telephone numbers of other 'A' grade officers, who reside in city limit, are given in **Annexure – IV.**

The Electric Supply Division is also having a plan for posting the officers in Grade A-4 and A-5, in addition to the officers posted at various Receiving Substations for 24 hours in case of emergencies. The list of such 'A' & 'B' Grade officers is given in **Annexure –VI.** Telephone numbers of all the Senior Officers from AG M(ES) to Divisional Engineers are given in **Annexure – VII.** The list of Receiving Substations with phone numbers is given in **Annexure – VIII.** The ward wise identified low lying flooding prone areas are given in **Annexure – IX**

**7.0 Coordinating Officers at MCGM Control Room in case of Disaster :**

The coordinating officer who will report to Disaster Management Control (DMC) Room of Municipal Corporation of Greater Mumbai at their Headquarters and who will be coordinating with BEST Officers, are as follows :

<b><u>DISASTER CONTROL BOOKING – 2022</u></b>				
<b><u>Co-ordinating officers :</u></b>				
Sr.No.	Name	Design.	Dept.	Mobile no. / office no.
1	Shri S.D.Jogalekar	Supdt.	Power Purchase	9869035357 / 22856262 Ext.733
2	Shri V.D. Mandke	Asst. Engr.	High Value Consumers	9869416799 23002767
3	Shri M.K. Anwar	Supdt.	Customer Care E Ward	9869222159, 23002597 Ext. 555
4	Shri T.N. Shekokar	Asst. Engr.	Erection (S)	9967538721, 23711943 Ext. 701

**8.0 Protocol for activating Disaster Management Plan :**

It can be seen that BEST is an organization well prepared to meet all types of emergencies. One can be sure that Electric Supply Wing of BEST will carry out whatever is expected of it, as dictated / compelled by the nature of the disaster and the needs of the situation.

The message received from the Disaster Management Control Room of MCGM or from any other Agency to the System /Supervisory Control & ZCC will be conveyed immediately to the Operational Staff for their action and to the Senior Officers of Electric Supply Division. The details of message and timing of receipt of message will be logged in respective Control Rooms.

Depending upon the nature of emergencies such as fire, flood, collapse of dilapidated building due to heavy rain etc., the fault engineers, mains engineers, will rush to the sites and the 'A' Grade Officers in-charge as mentioned in **Annexure –IV** will take charge of the situation at site for giving necessary instructions to the staff. The main function of this staff at site is to switch off the electric supply of the affected areas in order to avoid the further damages. The Officers at site, Fault engineers, Mains engineers will be always in co-ordination with the respective Control Rooms with wireless sets fitted in vehicles, static Wireless sets in Control Room, walky-talky etc. Depending upon the severity of incidence, the emergency officers mentioned in **Annexure-VI** will be booked at the respective RSS and fault controls and fuse controls for co-ordination with the operating staff and the consumers.

During the emergency the System Control Room in South zone and Supervisory Control Room in North zone will be headed by the Dy. Chief Engineer (Distribution South) and Dy. Chief Engineer (Distribution North) respectively who will have the overall control over the Control Rooms and operation of the staff. They will be also in contact with the Police, Fire brigade and MCGM authorities for their help. The Divisional Engineers of non-emergency department like Erection, Construction divisions will have a monitoring role during the emergency over the operations of the staff under their divisions. The vehicles of these divisions will also be utilized for emergency

duties. After attending the emergencies, the necessary feedback will be given by Operational Staff to the Control Room, which will be conveyed to all Senior Officers of Electric Supply Division and the General Manager. The next step will be the restoration of the electric supply, whenever the situation is normalized.

9.0 **Communication:**

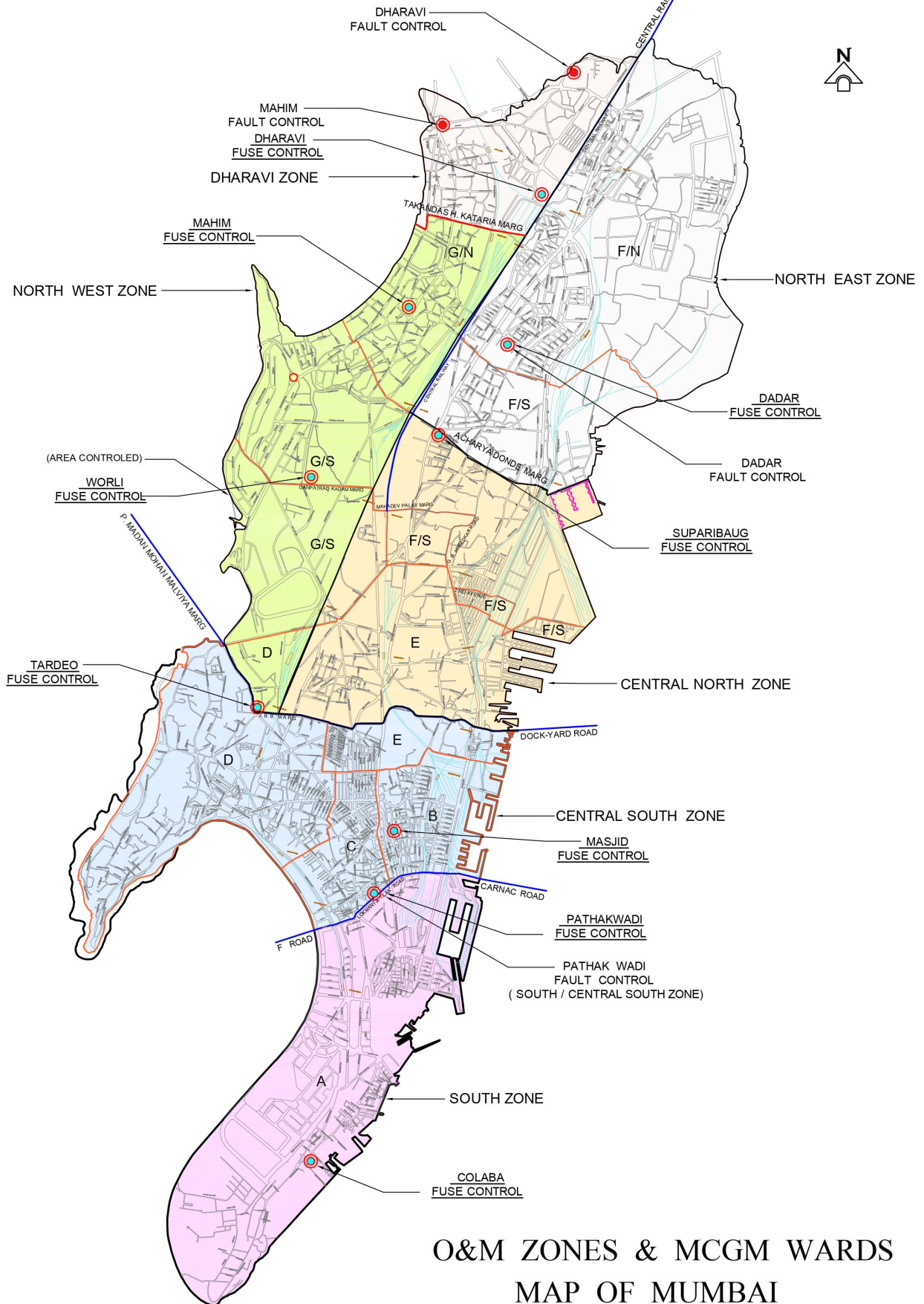
Communication is one of the important aspects in any Disaster Management. All the 64 RSSs are provided with MTNL Telephone Lines. The Supervisory Control, System Control, ZCC & Fault Controls are provided with MTNL, Tata telephone lines, the static wireless sets and hot lines. The emergency vehicles are fitted with the wireless sets. Walky-talkies are also provided to fault engineers.

10.0 **Redundancy:-**

The redundancy in the electrical system is required to be built so that enough spare capacity is available whenever there is a non-availability of equipment and cables, due to faults or outages due to normal maintenance. The Electric Supply Division has its norms well defined in order to maintain the reliability of the Electric Supply. The sufficient redundancy is provided in H.V. / L.V. networks in order to transfer the loads and to minimize interruption of supply. This is achieved by the optimum loading of distribution and power transformers keeping down the low distribution loss. The Electric Supply division is also maintaining the sufficient stock of various equipments, which are being utilized in case of emergency for replacement of faulty equipments for distribution of electricity to the consumers. Depending upon the consumption level, the tenders are invited for procurement of various types of equipments annually or biennial.

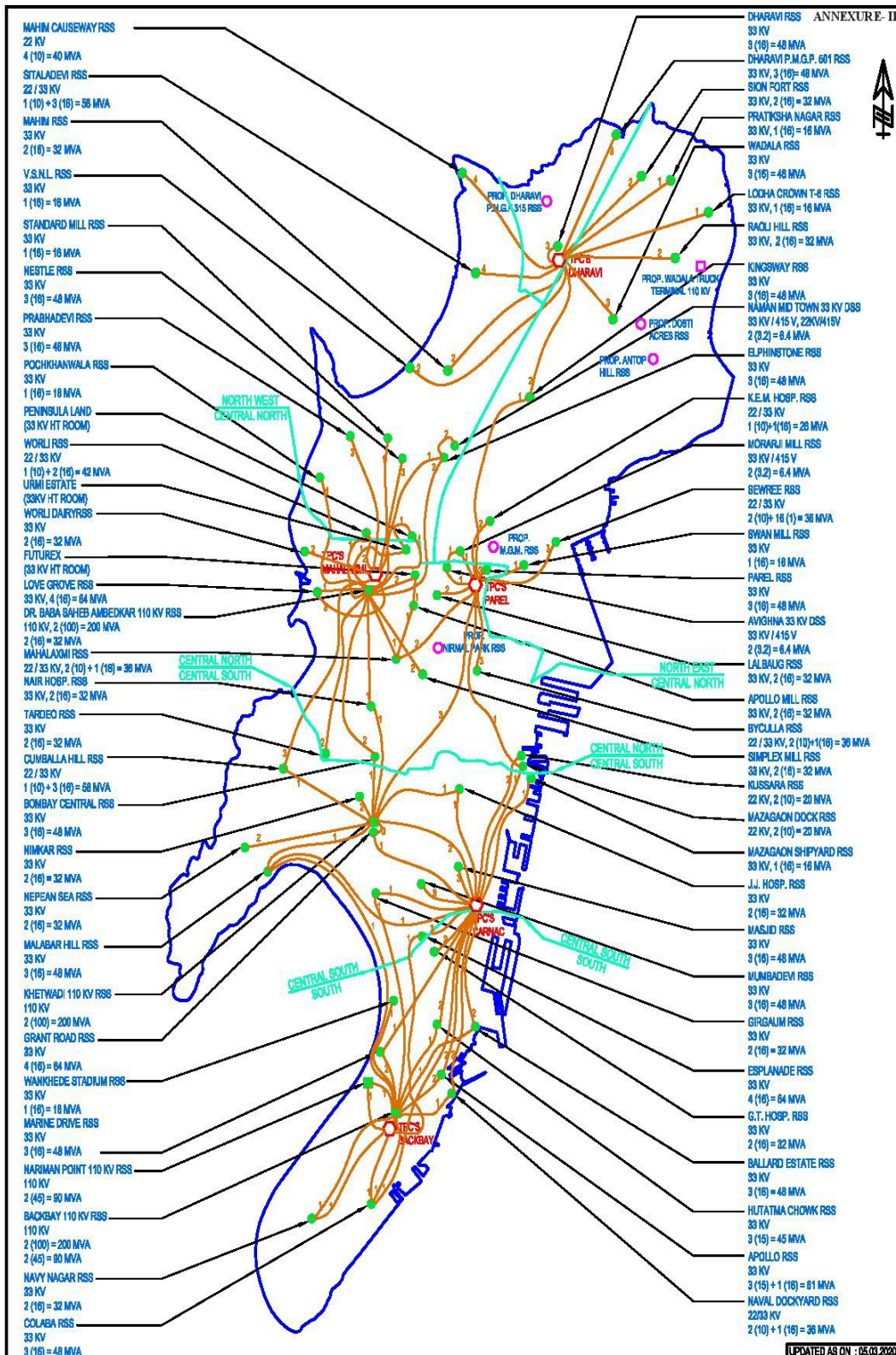
11.0 However, in the event of any tripping of Tata Power Generating Units or failure of any EHV Transmission Lines feeding BEST's Distribution Network in Island City of Mumbai, there may be electricity supply failure in the BEST's area of supply for certain duration.

-----xx-----



O&M ZONES & MCGM WARDS  
MAP OF MUMBAI





<b>LEGENDS:</b> ● BEST EXISTING 22/33 KV REC. SUB-STN. ○ BEST PROPOSED REC. SUB-STN. ■ BEST EXISTING 110 KV REC. SUB-STN. □ BEST PROPOSED 110 KV REC. SUB-STN.		DRN BY: J.P. GORE DESIGNED BY: V.S. GURJAN	SPRO: NNS DEPRO: SUD DCEPL: N.T.S.	DRG. NO.: SK / PRO (2010) 11 DATE: 25.02.2010	TITLE: MAP SHOWING POWER SUPPLY ARRANGEMENT FOR B.E.S.T. D501 DRAWING OFFICE GENERAL US C-PROJ-SK-PRO (2010) 11 (SUPPLY OF BEST) PTD 21.03.2020 FOR BULLETIN	PROJECT DEPARTMENT: THE B.E.S.&T. UNDERTAKING 2 <sup>nd</sup> Floor, Backbay Veej Bhavan, Plot No.- 149/150, General Jagannath Bhosale Marg, Mumbai- 400 021.
--	--	---	--	--	---	--

[UPDATED AS ON - 05.03.2020]



**List of Officers of Operation & Maintenance Divisions**

Name	Designation	Tel. Nos.		Responsibilities
		Residential/ Mobile	Office	
<b>South, Central South, Central North, North West &amp; NorthEast</b>				
Naik A.V.	CEM	9869427564 9833729735	22883280	In-charge of Distribution of South & North Division.
G. G. Chandankar (Nodal Officer for Disaster Management)	DCEDN	9757435560	24102929	In-charge of overall control of HV/LV distribution of all North Zones. In charge of liaison with police control, fire brigade and MCGM authorities for necessary help.
Fulpagare S.V.	DCEDS	9869870154	22080524 Ext. 800/801	In-charge of overall control of HV/LV distribution of all South Zones. In charge of liaison with police control, fire brigade and MCGM authorities for necessary help.

**OPERATION & MAINTENANCE SOUTH**

Dadiyal G.S.	DEMS	8169341863 9757410943	22154428 22153486	In-charge of South Zone
Khole V.S.	SMS 2	9870595200	22153486	RSS Maintenance & Manning
Sonawane P.R.	SMS 3	7506868589	22153486	Static-I & Static-II, Store, Asset Management, Departmental Store, Fault Control, L.V. Supply Restoration. L.V. Load & L.V. Scheme Preparation
Pawar S. N.	SMS 1	8879529371	22153486	Testing, Permanent Repairs, Pillar, Scheme Execution Maintenance & All Vehicles
Mali V. R.	AEMS 1	9702952979	22153486	HV Supply Restoration

<b>OPERATION &amp; MAINTENANCE CENTRAL SOUTH</b>				
Sayani M.R.A.	DEMCS	9967278634	22080524 Extn.741	In-charge of Central South Zone
Zope R.B.	SMCS 1	8779376948	22080524 Extn.743	Static –I, Static-II, L.V. Scheme Preparation / L.V. Loads
Sonawane N.N.	SMCS 2	9869244920	22080524 Extn.791	H.V. Supply Restoration & All MIS (Departmental & Temp. Supply)
Daberao K.R.	SMCS 3		22080524 Extn.791	Khetwadi Scheme Execution, Testing
A.Q. A.S. Malholi	AEMCS 3	8779516383	22080524 Extn.744	RSS maintenance, Khetwadi 110 KV RSS
F. M. Khan	AEMCS 4	9821375271	22080524 Extn.745	LV Supply Restoration,
Chormale D.R.	AEMCS 2	9867998639	2208524 Extn.792	MVD Allocation, Asset MERC Report, SOP, Temporary Supply South & Central South and System Control
A.A.M.S. Khan	AEMCS 1	9870854415	22080524 Extn.791	Pillar Maintenance, Permanent Repair

<b>OPERATION &amp; MAINTENANCE CENTRAL NORTH</b>				
Khadke Y. N.	DEMCN	9869401952	24121740 24120301	In-charge of Central North zone
Taur S.M.	SMCN 1	9969011671	24121740 24120301	Permanent Repair, U/G Cable Testing, Scheme Execution & Pillar Maintenance
Suryavanshi S.D.	SMCN 2	7506692505	24121740 24120301	RSS Maintenance & HV supply restoration, Zonal Control Central North (ZCC)
	AEMCN 2		24121740 24120301	DSS Maintenance (Static I & II)
Surti H.G.	AEMCN 3	9029219435	24121740 24120301	L.V. Supply Restoration, arrangement of Temporary Supply, Scheme Preparation & Fault Control ,



**OPERATION & MAINTENANCE NORTH EAST**

Gunjal P.D.	DEMNE	9920472348	24012951 9029011457	In-charge of North East zone
	SMNE 1		24071664	RSS, R & M, HV Supply Restoration & Nodal officer
Lokhande S.D.	SMNE 2	9869053327	24071664	Static I, Static II, MIS, Statistical Data & RTI First Appellate Authority
Jadhav G.N.	SMNE 3	9869701643	24071664	Permanent Repairs, Testing & Outstanding recovery in respect of damaged cable in co-ordination with AAO.
Purnadare S.G.	AEMNE 2	9819148149	24071664	LV Supply Restoration, Load sheet, DG Set & Dadar Fault Control , Temp. Supply & Asset Management
Dandekar I.A.R	AEMNE 3	7304030424	24071664	Scheme preparation & Scheme execution ( Maheshwari Udyan & Monorail Scheme Chowky) .
Wahut B.S.	AEMNE 4	9029529892	24071664	Pillar Maintenance & MV / Driver allocation including Hiring of Vehicle from outside parties

**OPERATION & MAINTENANCE NORTH WEST**

Deshmukh D.S.	DEM(N/W)	9969007861	7208940968	In-charge of North West zone
Jamghare D.R.	SMNW 1	9967468906	7208940971	HV supply restoration, RSS maintenance & DBA 110 kV RSS
Wayal N.M.	SMNW 2	8097016868	7208940568	Permanent Repair Section Dharavi-Kalakilla chowkey. SIMHA-97 & scheme execution.
Patil S.V.	SMNW 3	7710926167	24145888	Supervisory Control (SRC), Testing Section ( Prabhadevi & Dharavi)
Kulkarni A.V.	SMNW 4	9082727482	8097585485	Overall In Charge of Dharavi Cell, Scheme preparation, LV supply restoration section, Temporary Supply, Dharavi Fault Control
Shinde A.B.	AEMNW 1	9082727482	7208940367	Permanent Repair Section (Prabhadevi ) & P M Section.
Koyande A. R.	AEMNW 3	8779505006	8097562072	LV supply restoration section & Temporary Supply (Prabhadevi), Mahim Fault Control, DG Set, Schemes preparation, Asset Management
Prabhu R.B.	AEMNW 4	9869616852	7208940970	Static I & II, Vehicle and Driver arrangement.

ANNEXURE - IV

**A Grade Officers ( A-4 ) & (A-5) residing in our area of Supply**

Sr. No.	Name	Grade	Department	Cell No.	Res. Location
1	M. M. SALVE	Supdt.	DCECCS Office	9820591251	SITLADEVI QTR
2	M.M.DAWARE	Supdt.	Power Purchase	9869564612	SITLADEVI QTR
3	R. B. GHATE	Suptd.	Planning (N)	9969010219	MATUNGA QTR
4	G. S. BAINS	Suptd.	SYS. PROT.	7967440695	CUMBALLA HILL
5	S.D. JOGLEKAR	Supdt.	Power Management.	9869035537	LOVE GROVE QTR
6	M. K. ANWAR	Supdt.	CC (E) ward	9869222159	COLABA QTR.
7	D. R. CHORMALE	A.E.	O&M(C/S)	9867998639	SION
8	A. B. SHINDE	A.E.	CC (F/S)	9869454302	MATUNGA QTR
9	B. S. KAMBLE	A.E.	CC(B)	9869034874	CUMBALLA HILL
10	H. N. SAWANT	A.E.	CC(F/N)	9869112360	JACOB CIRCLE
11	S. S. PATIL	A.E.	MTS	9869100531	WORLI
12	V. D. MANDKE	A.E.	HVC	9869416711	SION
13	S. K. JAMBHALE	A.E.	VIG (S)	9869011003	SION
14	A. T. KAMBLI	A.E.	SYS. PROT.	8104471305	PAREL
15	A. A. KAZI	A.E.	EREC.(N)	9821347040	MUMBAI CENTRAL
16	P. L. KOTURWAR	A.E.	O&M(CN)	9892053319	SION
17	A.Q.A.S. MALHOLI	A.E.	O&M(CS)	8779516383	MUMBAI CENTRAL
18	S. R. DESHMUKH	A.E.	CC(C) ward (on loan to CC(D)ward)	9987096135	CUMBALLA HILL

-----x-----

**LIST OF ESSENTIAL FEEDERS IN SOUTH ZONE****APPOLLO RSS**

Sr.	ESSENTIAL CONSUMER	NAME OF DSS	11 KV FEEDER	TR. NO.
1	Electric House	Electric House	A-1.4	1
2	Police Head Quarters	Chhatrapati Shivaji Marg	A-2.4	2
3	Indian Navy	INS Angre	A-2.5	2
4	Apollo RSS	Apollo Static	A-4.3	4
5	Taj Hotel	Taj	A-1.2, A 2.4	1,2
6	Janmabhoomi Press	Janmabhoomi	A-2.7	2
7	Mumbai Stock Exchange	New Stock Exchange	A-1.5, 2.1. 3.1	1, 2, 3

**G.T. HOSPITAL RSS**

Sr.	ESSENTIAL CONSUMER	NAME OF DSS	11 KV FEEDER	TR. NO.
1	Times of India	Times/Times of India	GT-1.2	1
2	Police Commissioner's Office	Commissioner Office	GT-2.4, 1.7	1 & 2
3	BMC Pumping & Disaster Management MCGM	Corporation	GT-1.2	1
4	Bombay Hospital	B'bay Hospital Annex.	GT-2.3	2
5	G.T. Hospital / Cama Hospital	G.T. Hospital	GT-2.1	2
6	Bombay Hospital Medical Research Centre	Medical Research Centre	GT-2.5 GT 1.6	1,2

**NARIMAN POINT RSS**

Sr.	ESSENTIAL CONSUMER	NAME OF DSS	11 KV FEEDER	TR. NO.
1	Free Press	Free Press	NP-2.1	2
2	Sachivalaya	Sachivalaya Annex.	NP-2.2	2
3	Indian Express	Indian Express	NP 2.3 / 3.3	1, 2
4	Vidhan Bhavan	New Council Hall	NP-2.7	2
5	Vidhan Bhavan Stand By Supply	Union Bank	NP-4.1	2
6	Mantralaya	Mantralaya New	NP-3.6/ NP-2.2	1,2
7	Aakashwani	A.I.R. Studio	NP-3.3	1
8	MERC	Commerce Centre	NP-4.3	2
9	Oberoi Hotel	Oberoi Sheraton/ Oberoi Ann.	NP-4.7, NP- 1.8, NP-3.5	2,1,1
10	PIEM Hotel	PIEM Hotel	NP-1.7	1

**COLABA RSS**

Sr.	ESSENTIAL CONSUMER	NAME OF DSS	11 KV FEEDER	TR. NO.
1	Indian Navy	INS Kunjali	C-1.6	1
2	Piem Hotel	Piem Hotel	C 2.5	2
3	BEST Computer Centre/ Geeta Nagar Pumping	Backbay Depot/ Geeta Nagar Pumping	C-3.4	3

**HUTATMA CHOWK RSS**

Sr.	ESSENTIAL CONSUMER	NAME OF DSS	11 KV FEEDER	TR. NO.
1	Telegraphic Office	C.T.O.	HC-1.2, 3.3	1&3
2	ENT Hospital	ENT Hospital	HC 1.4	1
3	City Tel. Exch.	Telephone	HC-2.3	2
4	VSNL	OCS	HC 3.2	3
5	High Court	High Court	HC-1.3, 3.3	1&3

**BALLARD RSS**

Sr.	ESSENTIAL CONSUMER	NAME OF DSS	11 KV FEEDER	TR. NO.
1	Indian Navy	Ballard Docks	BE-1.4,2.2,3.2	1, 2, 3
2	Mint	Mint	BE-2.1 / 1.2	1, 2
3	St. George Hosp. + G.P.O	St. George	BE-3.4	3
4	New Reserve Bank	New RBI, New Mint	BE 3.6, 1.1	3, 1
5	BEST VHF Supply / RBI	New Mint	BE-1.1	1

**MARINE DRIVE RSS**

Sr.	ESSENTIAL CONSUMER	NAME OF DSS	11 KV FEEDER	TR. NO.
1	BMC Churchgate Pumping	Churchgate Sew-Ppg.	MD-1.7	1
2	Telecom	Telecom	MD-2.4	2
3	Air-India	Air-India	MD-3.1	3
4	M.D. RSS	CCI	MD-3.2	3
5	Vidhan Bhavan	New Council Hall	MD-1.1	1/2

**NAVAL DOCKYARD RSS**

Sr.	ESSENTIAL CONSUMER	NAME OF DSS	11 KV FEEDER	TR. NO.
1	Naval Dock Yard RSS	All Feeders to Naval Dock	All Fdr.	All

**NAVY NAGAR RSS**

Sr.	ESSENTIAL CONSUMER	NAME OF DSS	11 KV FEEDER	TR. NO.
1	Colaba sewage	Colaba sewage	NN 1.1	1
2	Army & Navy	MES No.1	NN 1.2	1
3	TIFR	TIFR & TIFR Old	NN 1.4, 2.5	1, 2
4	Colaba Purification Colaba Observatory Robert Road Pumping, Ashwini Hospital	Colaba Purification, Colaba Observatory, Robert Road Pumping, Ashwini Hospital	NN 1.7	1
5	BEST Computer Centre/ Geeta Nagar Pumping	Backbay Depot/ Geeta Nagar Pumping.	NN-1.5	1

### **BACKBAY RSS**

Sr.	ESSENTIAL CONSUMER	NAME OF DSS	11 KV FEEDER	TR. NO.
1	Cooperage Exchange	Cooperage Exchange	BB 1.2,	1
2	Colaba Air Compressor	Colaba Air Compressor	BB 1.7	1
3	Colaba Tel. Exchange	Strand Cinema	BB 2.2	1
4	BMC Pumping	Cooperage Pumping	BB 2.3	1
5	Cuffe Parade Tel. Exchange	Somani School East	BB 2.5	1
6	State Control	Cooperage Rd.	BB 2.6	1
7	MERC	Commerce Centre	BB 2.5	1
8	Sachivalaya Annexe	Sachivalaya Annexe	BB 1.5	2
9	Mantralaya	Mantralaya New	BB 1.5	1

### **LIST OF ESSENTIAL FEEDERS IN CENTRAL SOUTH ZONE**

#### **MALBAR HILL RSS**

Sr.	ESSENTIAL CONSUMER	NAME OF DSS	11 KV FEEDER	TR. NO.
1.	Varsha Bungalow (C M Resident)	Mount Pleasant (E)	MH 1.1	1
2.	Sahyadri Guest House	Sahyadri Guest House	MH 1.1	1
3.	Malbar Hill R.S.S.	New Siri Road	MH 2.7	2
4.	Malbar Hill Booster Pumping	Malbar Hill Booster	MH 3.5	3
5.	Antilia	Antilia	MH 3.5	3

#### **NEPEANSEA RSS**

Sr.	ESSENTIAL CONSUMER	NAME OF DSS	11 KV FEEDER	TR. NO.
1.	Governor of Maharashtra	Raj Bhavan	NS 2.1	2
2	Raj Bhavan Premises	Walkeshwar (S)	NS 1.1	1
3	Malbar Hill Reservoir	Malbar Hill Reservoir	NS 2.4	2
4.	Malbar Hill Pump	Malbar Hill Pumping	NS 2.4	2
5	Nepeansea Rd. RSS	Godrej Baug	NS 1.4	1
6.	Varsha Bungalow (C M Resident)	Mount Pleasant & Everest Apartment	NS 3.2	2

#### **GRANT ROAD RSS**

Sr.	ESSENTIAL CONSUMER	NAME OF DSS	11 KV FEEDER	TR. NO.
1.	Grant Road R.S.S.	Grant Road Static	GR 3.1	3
2.	Khetwadi R.S.S.	Grant Road Static	GR 3.1	3
3.	Harkisondas Hospital	Harkisondas Hospital	GR 1.6	1
4.	Saifee Hospital	Saifee Hospital	GR 1.1	1
5.	J. J. Hospital	Baboola	GR 4.6	4
6.	J. J. Hospital	J. J. Hospital	GR 4.6	4
7.	Durgadevi Reservoir	Durgadevi Reservoir	GR 2.4	2

**CUMBALA HILL RSS**

Sr.	ESSENTIAL CONSUMER	NAME OF DSS	11 KV FEEDER	TR. NO.
1.	Breach Candy	New Breach Candy	CH 1.5	1
2.	Breach Candy	New Breach Candy	CH 3.6	3
3.	Jaslok	Jaslok	CH 3.3	3
4.	Cumbala Hill R.S.S.	Olympus	CH 1.3	1
5.	Antilia	Antilia	CH 3.2	3

**ESPLANADE RSS**

Sr.	ESSENTIAL CONSUMER	NAME OF DSS	11 KV FEEDER	TR. NO.
1.	System Control R.S.S.	Vidyut	E 2.1	2
2.	Esplanade R.S.S.	Vidyut	E 2.1	2

**GIRGAON RSS**

Sr.	ESSENTIAL CONSUMER	NAME OF DSS	11 KV FEEDER	TR. NO.
1.	Girgaon R.S.S.	Girgaon (W)	GM 2.7	2

**MUMBADEVI RSS**

Sr.	ESSENTIAL CONSUMER	NAME OF DSS	11 KV FEEDER	TR. NO.
1.	Mumbadevi R.S.S.	Mumbadevi Tank	MU 3.3	3
2.	Kalbadevi Telephone Exchange	Kalbadevi Telephone Exchange	MU 3.3	3

**MASJID RSS**

Sr.	ESSENTIAL CONSUMER	NAME OF DSS	11 KV FEEDER	TR. NO.
1.	Masjid R.S.S.	Khadak Street	MS 1.2	1
2.	Shayda Marg MCGM Pumping	Shayda Marg	MS 2.6	2

**J. J. HOSPITAL RSS**

Sr.	ESSENTIAL CONSUMER	NAME OF DSS	11 KV FEEDER	TR. NO.
1.	J. J. Hospital	J. J. Hospital North	JJ 1.4	1

**NIMKAR MARG RSS**

Sr.	ESSENTIAL CONSUMER	NAME OF DSS	11 KV FEEDER	TR. NO.
1.	Harkisandas Hospital	H N Hospital	NM 1.5	1
2.	Harkisandas Hospital	H N Hospital	NM 2.5	2
3.	Nimkar Marg RSS	Tardeo Depot	NM 1.1	1

**MAZGAON SHIP YARD RSS**

Sr.	ESSENTIAL CONSUMER	NAME OF DSS	11 KV FEEDER	TR. NO.
1.	Mazgaon Shipyard RSS	BSN	MSY 1.5	1

**LIST OF ESSENTIAL FEEDERS IN CENTRAL NORTH ZONE**

**KUSSARA RSS**

Sr.	ESSENTIAL CONSUMER	NAME OF DSS	11 KV FEEDER	TR. NO.
1	Kussara RSS	Kussara STATIC	K 2.3.	2

**KEM HOSPITAL RSS**

Sr.	ESSENTIAL CONSUMER	NAME OF DSS	11 KV FEEDER	TR. NO.
1	Wadia Hospital	Wadia Hospital	KEM 1.1/2.2	1
2	Tata Hospital,	New Tata Memorial	KEM 1.1	1
3	Halfkin Institute	New Halfkin	KEM 1.4	1
4	Tata Hospital	Jubli Block	KEM 2.1	2
5	KEM Hospital & KEM RSS	KEM No.2	KEM 2.5	2

**SEWREE RSS**

Sr.	ESSENTIAL CONSUMER	NAME OF DSS	11 KV FEEDER	TR. NO.
1	Sewree RSS	King Edward	SW 1.4	1
2	KEM Hospital	KEM X Ray, Cardiac	SW 1.6	1
3	T.B. Hospital	Hospital	SW 2.3	2
4	Tata Cancer Hospital	Tata Memorial Annexe	SW 3.3	3

**SWAN MILL RSS**

Sr.	ESSENTIAL CONSUMER	NAME OF DSS	11 KV FEEDER	TR. NO.
1	Omnitalk wireless repeator Tower	TATA Housing	SN 1.1	1
2	Swan Mill RSS	Swan Mill Static	SN 1.6	1

**MORARJI MILL RSS**

Sr.	ESSENTIAL CONSUMER	NAME OF DSS	11 KV FEEDER	TR. NO.
1	Morarji RSS	Morarji Mill RSS Supply	Morarji Mill RSS LVB	1

**MAZGAON DOCK RSS**

Sr.	ESSENTIAL CONSUMER	NAME OF DSS	11 KV FEEDER	TR. NO.
1	Prince Ali Khan Hosp.	Ismalia Hosp.	MZ 1.3	1
2	Mazgaon Tel. Exchange	Mazgaon Tel. Exchange	MZ 1.4.	1
3	Mazgaon Dock	South Yard	MZ 1.5.	1
4	Bhandarwada Pumping	Bhandarwada Pumping	MZ 2.1.	2
5	Mazgaon Dock RSS	Mazgaon Dock Qtrs.	MZ 2.2	2
6	Naval store depot	Ordinance depot	MZ 2.6	2

**BOMBAY CENTRAL RSS**

Sr.	ESSENTIAL CONSUMER	NAME OF DSS	11 KV FEEDER	TR. NO.
1	MCGM'S Wyle Rd. Ppg Stn. & Civil Defence	Jacob Circle	BCT 1.2	1
2	Bombay Central RSS	Potia Estate	BCT 2.2	2
3	S.T. Depot	State Transport	BCT 3.1	3

**BYCULLA RSS**

Sr.	ESSENTIAL CONSUMER	NAME OF DSS	11 KV FEEDER	TR. NO.
1	Byculla Fire Brigade	Souter Street	BY 1.5	1
2	Byculla RSS	Connaught West	BY 2.2	2
3	Boundary Rd. Pumping Stn.	Boundary Rd.	BY 2.3	2
4	Masina Hospital	Masina Hospital	BY 3.6	3

**PAREL RSS**

Sr.	ESSENTIAL CONSUMER	NAME OF DSS	11 KV FEEDER	TR. NO.
1	MTNL Curry Rd.	MTNL Curry Rd.	P 1.4	1
2	Chinchpokli Pumping Stn.	Chinchpokli Pumping	P 1.5	1
3	M.G. Hospital & Parel Tank Pumping Stn.	M.G. Hospital	P 2.1	2
4	Parel RSS	Wadia Co-Op.	P 3.3	3
5	KEM Hospital & KEM RSS	KEM No.2	P 3.5	3

**NAIR HOSPITAL RSS**

Sr.	ESSENTIAL CONSUMER	NAME OF DSS	11 KV FEEDER	TR. NO.
1	Nair OPD	Nair OPD	NH 1.1	1
2	Nair Hospital RSS	Nair Hospital Static	NH 1.2	1
3	Nair Hospital	Nair Hospital	NH 1.4	1
4	Jagjivanram Hospital	Jagjivanram	NH 1.7	1
5	Byculla Tel. Exchange	Byculla Tel. Exchange	NH 2.1	2

**MAHALAXMI RSS**

Sr.	ESSENTIAL CONSUMER	NAME OF DSS	11 KV FEEDER	TR. NO.
1	Kasturba Hospital	Sane Guruji Marg	ML 1.5.	1
2	Jacob Circle Pumping Stn, Mahalaxmi RSS	New Circle	ML 2.1.	2
3	Dr. B. A. 110 KV RSS	SBM Static	ML 1.1	1

**LALBAUG RSS**

Sr.	ESSENTIAL CONSUMER	NAME OF DSS	11 KV FEEDER	TR. NO.
1	Lalbaug RSS	Lalbaug Static	1.3	1

**SIMPLEX MILL RSS**

Sr.	ESSENTIAL CONSUMER	NAME OF DSS	11 KV FEEDER	TR. NO.
1	Simplex Mill RSS	Planet Godrej	SMX 2.2	2

**APOLLO MILL RSS**

Sr.	ESSENTIAL CONSUMER	NAME OF DSS	11 KV FEEDER	TR. NO.
1	Apollo Mill RSS	Lodha Premierio Annx	AM 1.2	1



**LIST OF ESSENTIAL FEEDERS (NORTH EAST)**  
**KINGSWAY RSS**

Sr.	ESSENTIAL CONSUMER	NAME OF DSS	11 KV FEEDER	TR. NO.
1.	Supervisory Control	Bus Garage	KG 1.2	1
2.	Kingsway R.S.S.	Kingsway Static	KG 3.7	3
3.	Traffic Control	Wadala Depot	KG 1.5	1
4.	Matunga Air Compressor (HV)	Matunga Air Compressor (HV)	KG 2.1	2
5.	Wadala Pumping (HV)	Wadala Pumping (HV)	KG 3.2	3
6.	Hindustan Petroleum	Hindustan Petroleum	KG 2.4	2
7.	Wadala Tel. Exchange (HV)	Wadala Tel. Exchange (HV)	KG 3.5	3

**SION FORT RSS**

Sr.	ESSENTIAL CONSUMER	NAME OF DSS	11 KV FEEDER	TR. NO.
1.	Sion Tel. Exch. (HV)	Sion Tel. Exch. (HV)	SF 1.2	1
2.	Tilak Hospital	Tilak Hospital	SF 1.3	1
3.	Lion Centre	Lion Centre	SF 1.5	1
4.	Sion Fort R.S.S. & Lion Centre	Sion Fort	SF 1.5	1
5.	Sion Hospital	Sion Hospital	SF 1.5	1
6.	Koliwada Pumping. Sion PPS	Koliwada Pumping.	SF 2.1	2
7.	Somaiyya Ayurvihar (Hosp.)	Somaiya Trust	SF 2.3	2
8.	Chunabhatti BMC pumping	Duncan causeway (HV)	SF 2.6	2
9.	Duncan Sewage Ppg. (MCGM)	Duncan Sewage Pumping	SF 2.5	1
10.	Air Force Qtrs.	Air Force Qtrs. (HV)	SF 1.7	1

**WADALA RSS**

Sr.	ESSENTIAL CONSUMER	NAME OF DSS	11 KV FEEDER	TR. NO.
1.	Salt Pan Pumping	Salt Pan Pumping	WD 1.1	1
2.	Kikabai Hospital Trust	Kikabai Hospital Trust (HV)	WD 1.3	1
3.	IPR Office	IPR Office	WD 2.3	1

**RAOLI HILL RSS**

Sr.	ESSENTIAL CONSUMER	NAME OF DSS	11 KV FEEDER	TR. NO.
1.	Raoli Hill PPG	Raoli Hill PPG	RH 2.3	2
2.	Anik CNG Plant,	Anik No. 1	RH 1.4	1
3.	Mahanagar gas	Mahanagar gas	RH 1.4	1

**LODHA CROWN RSS**

Sr.	ESSENTIAL CONSUMER	NAME OF DSS	11 KV FEEDER	TR. NO.
1.	Lodha Crown RSS	-----	-----	1

**DHARAVI RSS**

Sr.	ESSENTIAL CONSUMER	NAME OF DSS	11 KV FEEDER	TR. NO.
1.	SionHospital	Sion Medical	DH 1.3	1
2.	Kikabai Hospital/ Sion Hospital	Kikabai Hospital/ Sion Hospital	DH 2.5	2
3.	Dharavi R.S.S.	Shalimar Ind. Est.	DH 3.4	3

**MAHIM C'WAY RSS**

Sr.	ESSENTIAL CONSUMER	NAME OF DSS	11 KV FEEDER	TR. NO.
1.	Mahim C'Way R.S.S. & New Diabetic Association.	Mahim C'Way Static	MC 4.4	4

**SITALADEVI RSS**

Sr.	ESSENTIAL CONSUMER	NAME OF DSS	11 KV FEEDER	TR. NO.
1.	Sena Bhavan & Shushrusha Hosp.	Anand Van	ST 2.3	2
2.	Mahim Village Hospital	Mahim Village Hospital	ST 3.2	3
3.	Hinduja Hospital	National Hospital Annex (HV)	ST 3.3	3
4.	New Tulasi & BPL Centre (HV)	Mahim Ppg. /HV	ST 4.2	4
5.	Mayors Bungalow & Sitaladevi RSS	Cadell Rd.	ST 4.4	4
6.	Hinduja Hospital	National Hospital	ST 4.7	4
7.	New Dadar Purification (HV)	New Dadar Purification. (HV)	ST 2.5	2
8.	ShivajiPark Tel. Exch.	Shivaji park Tel. Exch.	ST 2.7	2

**LIST OF ESSENTIAL FEEDERS (NORTH WEST)****MAHIM RSS**

Sr.	ESSENTIAL CONSUMER	NAME OF DSS	11 KV FEEDER	TR. NO.
1.	Prabhadevi Tel. Exch. (HV) & GMT Block (HV)	Prabhadevi Tel. Exch. (HV) & GMT Block	MM 2.1	2
2.	VSNL (HV)	VSNL (HV)	MM 1.5	1
3.	Mahim RSS	Mahim Static	MM 2.6	2
4.	Diagnostic Centre	Diagnostic Centre	MM 2.7	2

**WORLI RSS**

Sr.	ESSENTIAL CONSUMER	NAME OF DSS	11 KV FEEDER	TR. NO.
1	Worli RSS	Raheja Atlantis	W 1.4	1
2	MCGM Control	MCGM Data Centre	W 2.4	2
3	MCGM's T.P. Road Ppg. Stn.	New Fergusson Air Compressor	W 3.3	3

**PRABHADEVI RSS**

Sr.	ESSENTIAL CONSUMER	NAME OF DSS	11 KV FEEDER	TR. NO.
1	Prabhadevi Tel. Exchange	Prabhadevi Tel. Exchange	PR 1.1	1
2	Prabhadevi RSS	A.B. Road (N)	PR 3.3	3
3	Doordarshan	Doordarshan	PR 3.5	3

**NESTLE RSS**

Sr.	ESSENTIAL CONSUMER	NAME OF DSS	11 KV FEEDER	TR. NO.
1	Nestle RSS	Nestle	NS 1.1	1
2	Peninsula Park	Peninsula Park	NS 2.2	2

**STANDARD MILL RSS**

Sr.	ESSENTIAL CONSUMER	NAME OF DSS	11 KV FEEDER	TR. NO.
1	Cynergy IT Park	Cynergy IT Park	SM 1.1,1.2	1
2	Standard Mill RSS	Standard Mill Static	SM 1.6	1

**POCHKHANWALA RSS**

Sr.	ESSENTIAL CONSUMER	NAME OF DSS	11 KV FEEDER	TR. NO.
1	Traffic Police Qtr.	Traffic Police Qtr.	PK 1.5	1
2	Naval Coast Guard	Coast Guard Creek	PK 1.6	1

**V.S.N.L RSS**

Sr.	ESSENTIAL CONSUMER	NAME OF DSS	11 KV FEEDER	TR. NO.
1	VSNL	VSNL Static	V 1.2	1

**ELPHINSTON MILL RSS**

Sr.	ESSENTIAL CONSUMER	NAME OF DSS	11 KV FEEDER	TR. NO.
1	Jupiter Mill	Jupiter Mill	EL 1.6	1
2	India Bulls	Elphinston Mill RSS	EL 1.3 & 1.7	1
3	ESIC Hospital	ESIC Hospital	EL 1.5	1

**P.M.G.P. RSS**

Sr.	ESSENTIAL CONSUMER	NAME OF DSS	11 KV FEEDER	TR. NO.
1.	Dharavi Depot	Dharavi Depot	PM 3.1	3
2.	ONGC Complex (HV)	ONGC	PM 1.2	1
3.	Dharavi Purif. (HV)	Dharavi Purif. (HV)	PM 2.1	2

**WORLI DAIRY RSS**

Sr.	ESSENTIAL CONSUMER	NAME OF DSS	11 KV FEEDER	TR. NO.
1	Doordarshan Kendra	Doordarshan	WRD 1.1	1
2	Worli Tel. Exchange	Worli Tel. Exchange	WRD 1.2	1
3	Worli Dairy RSS	Rishikesh	WRD 2.2	2
4	Naval Coast Guard	Coast Guard Creek	WRD 2.1	2
5	MCGM	Engineering Hub	WRD 2.4	2

**LOVE GROVE RSS**

Sr.	ESSENTIAL CONSUMER	NAME OF DSS	11 KV FEEDER	TR. NO.
1	MCGM's L.G. Pumping Stn.	Love Grove RSS	LG 1.8/ 2.7/4.2	1,2,4
2	Love Grove RSS	Discovery Of India	LG3.5	3
3	Atria Mall	Sainath co-op	LG 3.6	3
4	Nehru Science Centre	Science Centre	LG 3.3	3

-----x-----

ANNEXURE - VI

**BOOKING OF 'A' GRADE OFFICERS AT VARIOUS RECEIVING STATIONS DURING  
EMERGENCIES / DISASTER OF LARGE MAGNITUDE**

ZONE	SR. NO.	NAME OF THE RSS	PROPOSED BOOKING	
			20.00 HRS TO 08.00 HRS	08.00 HRS TO 20.00 HRS
SOUTH	1	Apollo	V.U. Kurade	J.P. Dhodi
	2	Backbay 110 KV	Y.N. Khadke	S.R. Deskhmukh
	3	Ballard Estate	P.N. Chaudhary	S.D. Chougule
	4	Colaba	A.R. Tiwari	P.R. Sonawane
	5	G.T. Hospital	P.A. Prabhu	M.M. Nagare
	6	Hutatma Chowk	N.N. Thale	S.A. Kulkarni
	7	Marine Drive	D.G. Patil	U.H. Gosavi
	8	Nariman Point	D.R. Ingle	M.A.S.A.Shaikh
	9	Naval Dock	---	---
	10	Navy Nagar	M.H. Kamble	M.M. Shaikh
CENTRAL SOUTH	11	Cumballa Hill	S. N. Virkar	B.S.Kamble
	12	Esplanade	S.M. Sonawane	R.J. Deshmukh
	13	Girgaum	S.D. Lokhande	S.D.Chougule
	14	Grant Rd	K.A. Dadmal	S.D. Suryavanshi
	15	J.J. Hospital	M. G. Patil	J.L. Pawar
	16	Khetwadi	N.A. Bhosale	A.Q.A.S.Malholi
	17	Malbar Hill	S.N. Jagtap	R.S. Kadam
	18	Masjid	S.A. Khatik	H.N.Sawant
	19	Mumbadevi	V.M. Avghad	N.N. Sonawane
	20	Nimkar Marg	D.R. Chormale	R.G. Kalvikatte
	21	Mazgaon Ship Yard	----	----
CENTRAL NORTH	22	B. Ambedkar 110 KV	S.A. Jadhav	V.S. Gujar
	23	Byculla	L.S. Patil	S.G. Surti
	24	Kussara	G.n. Jadhav	S.M.Taur
	25	Lalbaug	M.H. Waghmare	S.K. Jambhale
	26	Love Grove	S.S. Kulkarni	S.S. Patil
	27	Mahalaxmi	Y.S. Giri	A.R. Koyande
	28	Mazgaon Dock	----	----
	29	Mumbai Central	S.G. Kamdar	V.D. Mandke
	30	Nair Hospital	D.C. Shah	U.J.Karekar
	31	Parel	S.V. Shaha	B.B. Raikar
	32	Tardeo	V.G. Nagvekar	A.A. Kazi
	33	Worli Dairy	R. B. Ghate	S.Y. Modak
	34	Futurex	-----	----
	35	Jalan Mill	----	-----
	36	Apollo Mill	S.D. Kamble	J.M. Lande
	37	Simplex Mill	Y.P. Potdar	A.T. Kambli
	38	Avighana	---	-----

**BOOKING OF 'A' GRADE OFFICERS AT VARIOUS RECEIVING STATIONS DURING  
EMERGENCIES / DISASTER OF LARGE MAGNITUDE**

<b>NORTH EAST &amp; NORTH WEST</b>	39	Dharavi	S.S. Mairh	Y. R. Agnihotri
	40	Mahim	M.M. Davre	N.M. Wayal
	41	Mahim Causeway	S.Y. Jagtap	B.S. Wahut
	42	Nestle	P.K. Prabhu	S.P. Kulkarni
	43	PMGP	V.S. Gugnani	D.A. Mehta
	44	Prabhadevi	D.S. Kadam	S.S.Kuril
	45	Elphinston Mill	P.A. Puranik	P.V.Gholap
	46	Sitaladevi	M. M. Salve	V.R. Bhise
	47	Standard Mill	S.P. Dhake	R.M. Prabhu
	48	Worli	M.D. Karanjkar	R.R. Bandal
	49	VSNL	-----	----
	50	Peninsula Land	-----	----
	51	Pochkanwala Road	A.B. Shinde	S.V. Patil
	52	K'way	D.N. Desai	K.R. Daberoa
	53	KEM Hospital	M.R. Masurkar	S.P. Kulkarni
	54	Raoli Hill	S.P. Dhake	P.L. Koturwar
	55	Sewree	A.B. Shinde	A.S. Adangale
	56	Sion Fort	S.G. Purandare	V.S. Khole
	57	Swan Mill	R.K. Kamble	J.D. Dhodi
	58	Wadala	B.R. Bhole	C.S. Bramhane
59	Lodha Crown	V.S. Chavan	A. V. Sawant	
60	Pratiksha Nagar	P.P. Kulkarni	U. N. Desai	

Note : If the booked Officer is on leave or deputation or any changes in shift / RSS , the concerned Divisional Engineer (Maintenance) should take care to book substitute Officer in his place. The above booking will also be applicable in case of Mumbai / Maharashtra / Bharat Bandh subject to instructions from C.E. (Maintenance). In such cases, the concerned Officer shall contact respective System Supervisory Controls to confirm their names.

-----X-----

## ANNEXURE VII

**Electric Supply – Address & Telephone Numbers of Senior Officers**

Sr	NAME	DESIGNATION	OFFICE		RESIDENCE		FUNCTIONAL RESPONSIBILITIES
			LOCATION	TELE NO.	LOCATION	TELE NO.	
1	Lokesh Chandra	GM	Colaba	22799313	---	----	Entire over all in-charge of Electric Supply & Transport
				22856262			
Email id : gm@bestundertaking.com							
2	Vacant	DGM(ES)	Colaba	22830284			Entire over all in-charge of Electric Supply Branch
				22831950			
Email id : dgm@bestundertaking.com							
3	Herlekar N.M	AGM(ES)	Colaba	22831950	Flat no.3, 3 <sup>rd</sup> fl., Malabar Hill RSS Off. Qtrs. Malabar Hill, Mumbai 400 026	9869410254	Over all in-charge of Electric Supply Branch
				22830284			
Email id : agmes@bestundertaking.com							
4	Dr. Patsute R.D.	CECC	Colaba	22799563	Flat No.112, BEST Multistoried Bldg. 11 <sup>th</sup> floor, 142, Colaba, Mumbai - 400 001	9869405910	Over all In-charge of Customer Care Dept., Meters, IT & CGRF Dept.
Email id : cecc@bestundertaking.com							
5	Makwana S.P.	CEPL	Colaba	22799583	906, Neelkant Enclav. LBS Marg, Opp. Shreyas Cinema, Ghatkopar(W), Mumbai 400086	25001157 9869205357	Project planning Network, procurement of Street Lighting SCADA System.
Email id : cepl@bestundertaking.com							
6	Chougule N.N.	CER	Colaba	22040081	Bldg. E2, Flat No.11, Gitanjali CHS, Sector 46, Nerul(W), Navi Mumbai 400706	27718375 9969324485	Over all In-charge of Regulatory Cell
				22799567			
Email id : cer@bestundertaking.com							
7	Naik A.V.	CEM	Colaba	22840942	Flat No. 7, 1 <sup>st</sup> fl., Kingsway BEST Officers Qtrs., Dadar, Mumbai - 400 014	9869427564	Overall In-charge of O & M. Dept. all executing dept. i.e. Erection North, South, Construction
				22883282			
Email id : cem@bestundertaking.com							

8	Rokade V. K.	DCE( W)	Kussara	8097584818 8097584820	Veej Bhavan Officer's Qtrs., Flat No.2, 5 <sup>th</sup> flr., Nariman Point Mumbai 400 021	24085171 9869033322	Over all In-charge works dept. i.e. executing department Erection & Construction
				Email id : dcew@bestundertaking.com			
9	Fulpagare S.V.	DCE (DS )	Phatak wadi	22013635	EST off. Qtrs. Potia Land Mumbai Central Mumbai 400008	9869870154	Overall In charge of Operation and Maint. (South/ Central South) Departments
				Email id : dceds@bestundertaking.com			
10	Chandankar G.G	DCE (DN)	Wadala	24102929	B/15, BEST Officers Qtrs. Altamount Rd., Cumbala Hill, Mumbai 400026	9757435560	Incharge of all Operation and Maintenance of North Departments
				Email id : dcedn@bestundertaking.com			
11	Shaikh B. A. W.	DCECC (S)	Colaba	22841675	B/4, Morland Rd. Officers Qtrs. Near Mumbai Central Bus depot, Mumbai 400 008	9967915094	Over all In-charge of Customer Care A, B, C, D & Meters Dept. HVC
				Email id : dceccs@bestundertaking.com			
12	Patil R. B.	DCECC(N)	Wadala	24101532	Flat no. 2, BEST Kingsway officer qtrs. Parsi Colony, Dadar T.T. , Dadar (E), Mumbai 400 014	9833354391	Overall in-charge of Customer Care E, FS, FN, GN, GS, SIMHA
				Email id : dceccne@bestundertaking.com Email id : dceccnw@bestundertaking.com			
13	Deshmukh G. D.	DCE ( SL )	Sewree	24116023	Flat no. 132, 13 <sup>th</sup> flr., Multistoried Bldg. Electric House, Colaba Mumbai 400 001	22819025 9819732911	Over All In-charge of StreetLtg., Maintenance, Const. & Telecommunication & Electronics Department
				Email id : dcesl@bestundertaking.com			
14	Bhinge S.N.	DCEP / DCER	Colaba	22811257 22853483	B-3/302/ Shree Rajlaxmi Park, Kharegaon, Kalwa, Thane 400 605	25397140 9869475911	Over all In-charge of Power Management & Procurement of Renewable Energy and Regulatory Cell
				Email id : dcemerc@bestundertaking.com			

15	Kamat V.M	DCE (Review)	Colaba	22828891 22799732	215/5788, Darshan HIG Complex,Pant Nagar, Ghatkopar (E), Mumbai 400 075	25015195 9819230820	In charge of Review Committee
				Email id : dcerc1@bestundertaking.com			
16	Mukane S.B.	DECO	Sewree	24165188 24162879	BEST off. Qtrs. 12/B, Flat No.8, Mhada Colony, Andheri (E), Mumbai 93	9821489183	In-charge of Construction Dept.
				Email id : deco@bestundertaking.com			
17	Bamble M.B.	DEEN	Kussara	23719755	B-15, Happy Home Society, Jaideep Nagar, Nahur (E), Mumbai 400042	9769984929	In-Charge of Erection North Dept.
				Email id : deen@bestundertaking.com			
18	Chavan S.R.	DEES	Kussara	23719763	15, BEST Lovegrove Off. Qtrs. Dr. Annie Besant Rd., Worli, Mumbai 400 018	9819908076	In-charge of Erection South Department
				Email id : dees@bestundertaking.com			
19	Gunjal P.D.	DEMNE	Anik	24016611 24012951	3rd fl, BEST Officers Qtrs, 125, M.B. Raut Rd, Shivaji Park,Dadar Mumbai -28	9869137380	In-Charge of O&M(NE) Department
				Email id : demne@bestundertaking.com			
20	Deshmukh D.S.	DEMNW	Prabhadevi	24120301	OQ/A-1, Flat no. 15, BEST Off. Qtrs. A.D. Ubhare Marg, Ghatkopar (W), Mumbai 75	9969007861	In-charge of O & M (NW) Dept.
				Email id : demnw@bestundertaking.com			
21	Khadke Y. N.	DEMCN	Wadala	24108285	11/2, Plot No. 56, Best Officers Qtrs., Gorai Road, Borivali West Mumbai- 400092	9869401952	In-charge of O & M (Central North) Department
				Email id : demcn@bestundertaking.com			
22	Dadiyal G.S.	DEMS	Colaba Off Shore	22154428	6/101, Liliya Nagar, S.V. Rd., Goregaon, (W), Mumbai 62	816934186 757410943	In-charge of O & M South Department
				Email id : dems@bestundertaking.com			



23	Sayani M.R.A.	DEMCS	Pathak wadi	22073875	Flat no.11, 6 <sup>th</sup> flr., BEST Potio officers Qtrs. Mumbai Central Bus Depot, Bellasis Rd., Mumbai 400 008	9967278634	In-charge of O & M (CS) Department
				22080524 Ext. 741			
24	Pawar D.N.	DECC A Ward	Colaba	22883868	C/703, M-2,CHS Pratiksha Nagar, Sion,Mumbai 400 022	9870383684	In-Charge of Customer Care A Ward
				Email id : deccaward@bestundertaking.com			
25	Talegawkar A.R.	DECC B Ward	Colaba	22799541	3/14, BEST Officer Qtrs. Plot :56, Gorai - 2, Borivali (W), Mumbai 400 091.	98692207 98	In-charge of Customer Care B Ward
				Email id : deccbward@bestundertaking.com			
26	Kharote M.A.	DECC C Ward	Pathak wadi	22011814	1/C, 43, Kalpataru Hills,Chitalsar, Manpada, Thane (W), 400 610	9082080499	In-charge of Customer Care C Ward
				22080524			
27	Inchnalkar S. N.	DECC D Ward	Tardeo	23026803	Best Officers Qtrs Flat No.8,Vittal Chavan Marg, Parel east, Mumbai-400012	9869754601	In-charge of Customer Care D Ward.
				23014647			
28	Karekar U. J.	DECC E Ward	Mumbai Central	23002578	C/308,Bdg no. 8, Rajkamal CHSL, Tilak Nagar, Mumbai 400089	8369941475	In-charge of Customer Care E Ward
				Email id : decceward@bestundertaking.com			
29	Kasar R. U.	DECC F/N Ward	Wadala	24181324	239/6225, Anand Bharati CHS, Pantnagar, Ghatkopar (E), Mumbai 400 075	9869221301	In-charge of Customer care F/N Ward
				Email id : deccfnward@bestundertaking.com			
30	Mairh S. S.	DECC F/S Ward	Wadala	24104282	1 A, 604, Laxmi CHSL, Devrata nagar, Nr. Chunabhatti Police Stn. Chunabhatti (E) , Mumbai 400 022	9892687236	In-charge of Customer Care F/SouthWard
				Email id : deccfsward@bestundertaking.com			

31	Gawade S. S.	DECC G/N Ward	Dadar	24141389	A/504, Rajsatyam, Shiv valab Rd., Ashok Van Dahirsar E), Mumbai 068	24308661 9769626846	In-charge of Customer care G/North Ward
32	Sawant P. W.	DECC G/S ward	Dadar	24120557 24183276	B1/20, BEST Off. Qtrs. Devidayal Rd. Mulund (W), Mum 400 080	8850067337	In-charge of Customer care G/South Ward
33	Bansode P.K.	DECC (SIMHA)	Wadala	24157813 24126262	43/103, Devratna Ngr, Swadeshi Mill Comp. Chunabhatti, Mumbai 400 022	24054421, 9029011451	In -Charge of customer Care (SIMHA) Dept.
34	Adlinge S. S.	DE Meters	Wadala	24186353	12 B / 7, 1 <sup>st</sup> Flr.,Shivner Vasahat Marg, near PMGP Colony, Majaswadi , Mumbai 054	9869289810	In-charge of Meters Dept.
35	Sontakke S. P.	DEHVC	Tardeo	23026691, 23002767	304, Shivparvati CHS, Sector 2, Plot no. 9, Sanpada, Navi Mumbai, 705	9892141565	In-charge of High Value Consumers Dept.
36	Deshmukh R. J.	DESLM	Kussara	23781839	A/102, Regency Garden, Murbad Road, Purnima Talkies, Kalyan (W), 421301	9987042071	In-charge of St.Ltg Maintenance Department
37	Pardeshi S.V.	DET&E	Tardeo	23090036 23026801	Flat No.2,Flr,BEST Officers' Qtrs., Sion Fort, SionRd. no.1, Mumbai 400022	9869043987	In-charge of Telecommuni cation & Electronics Department.
38	Pawar S.N.	DEPRO	Veej Bhavan	22181420 22822080	Dolphine CHS, flat no. 003, Plot no. 22, Sector 13, New Panvel, Navi Mumbai 410 206	7208975906 9869240519	In-charge of Project Dept.

39	Gaikwad S.Y.	DEMTS	Kussara	23719753	1-A, Ram Apartment Pandurang wadi, R. No. 4,Goregaon, Mumbai 065	9869245437	In-charge of Material Testing & Standards Dept.
				Email id : demts@bestundertaking.com			
40	Samuel N.N.	DEPLM	Backbay	22811254	Shivlal Motilal Bldg. 2 <sup>nd</sup> flr. Jehangir Boman Behram Marg, Mumbai Central 400 008	9833088957	In-charge of Planning (Materials) Dept
				Email id : deplm@bestundertaking.com			
41	Chouhan D.J.	DEPLN	Backbay	22880950	203/H-9, Anand CHS, Pratiksha Nagar, Sion(E), Mumbai 022	9892073234	In-charge of Planning Network ( North & South) Dept.
				Email id : deplns@bestundertaking.com deplnet@bestundertaking.com			
42	Rane M.M.	DE(PM)	Colaba	22828365 22799555	1203, Rachana Garden Primrose CHS. Guru Govind Sing Marg, Mulund West Mumbai 014	9869396701 8879808046	In-charge of Power Management.
				Email id : depower@bestundertaking.com			
43	Bansode S.S.	DEPP DECGRF	Colaba	22841043 22799733 22799535	25/C/702, New Dindoshi Greenfield CHS, Mhada, Goregaon (E), Mumbai065	9869407196	In-charge of Renewable Power procurement.
				Email id : derc@bestundertaking.com decgrf@bestundertaking.com			
44	Desai U. N.	DEVIG (N)	Wadala	24172725	H11/202, Palm Acres CHSL,Mhada Colony, Pratiksha Nagar Sion East Mumbai 40022	9869029847	In-charge of Vigilance (N) Dept.
				Email id : devignorth@bestundertaking.com			
45	Shaikh M. M.	DEVIG (S)	Colaba	22799701	503/A, Aman Apprt., Hall Pakhadi Rd., Christian Village, Kurla West, Mumbai 400070	9820236483	In-charge of Vigilance (S) Dept.
				Email id : devigsouth@bestundertaking.com			
46	Essy S. K.	DETIE	Mumbai Central	23077670 23097698	48/1 A, Shaad Residency, 19 <sup>th</sup> flr., Flat no. 1904, E.S. Patanwala Rd., Opp. Veer Mumbai 027	9820039955	In-charge of TIE Dept.
				Email id : detie@bestundertaking.com			

-----X-----

ANNEXURE VIII

**ADDRESS & PHONE NOS OF RECEIVING SUB-STATIONS**

<b>SR. NO.</b>	<b>NAME OF EXIST. RSS</b>	<b>ADDRESS</b>	<b>TEL. NO.</b>
1	APOLLO	B.E.S. & T. Undertaking, Apollo RSS Near Lion Gate, Shahid Bhagat Singh Rd. Mumbai 400 001.	22843650, 7208964243
2	BYCULLA	B.E.S. & T. Undertaking, Byculla RSS Opp. Mafatlal MillGate No.2, Junction of E.S. Patanwalla Marg ,Mumbai 400 027.	23723339, 7208964366
3	BALLARD ESTATE	B.E.S. & T. Undertaking, Ballard Estate RSS Opp. New Custom Office,Shoorji Vallabhdas Rd. Mumbai 400 038.	22661696, 7208964244
4	COLABA	B.E.S. & T. Undertaking, Colaba RSS, Colaba Bus Stn. Opp. Graduate Womens Hostel, Mumbai 400 005.	22150070, 7208964109
5	DHARAVI	B.E.S. & T. Undertaking, Dharavi RSS Matunga Labour Camp, Near MSEBOffice, Mumbai 400 019.	24072793 7208969019
6	ESPLANADE	B.E.S. & T. Undertaking, Esplanade RSS Opp. BEST Vidyut Bldg, Pathakwadi Lane, Off. Lokmanya Tilak Rd. Mumbai 400 002.	22087767, 7208964249
7	GRANT ROAD	B.E.S. & T. Undertaking, Grant Road RSS Khetwadi 10th Lane, Nr Alfred Cinema, Mumbai 400 004	23824892, 7208964351
8	KUSSARA	B.E.S. & T. Undertaking, Kussara RSS, Near Bijlee Bhavan, Opp. MazgaonDock, Kussara Bunder Rd, Mumbai- 400 010	23726398, 7208964364
9	KINGSWAY	B.E.S. & T. Undertaking, Kingsway RSS BEST Workshop Gate No.2, TilakRd., Dadar T.T. Mumbai 400 014	24126637, 7208969014
10	GIRGAUM	B.E.S. & T. Undertaking, Girgaum RSS Zaobawadi, Ram Mandir JagannathShanker Sheth Rd. Girgaum, Mumbai 400 004.	22016475, 7208964252
11	MAHALAXMI	B.E.S. & T. Undertaking , Mahalaxmi RSS Near Sant Gadge Maharaj Chowk,(Saat Rasta),Sane Guruji Marg, Mumbai 400 011	23087229, 7208964367
12	MAHIM	B.E.S. & T. Undertaking, Mahim RSS Near Amar Hind Mahal, Gokhale Road (N), Dadar(W), Mumbai 400 028.	24223484 7208969013
13	MALBAR HILL	B.E.S. & T. Undertaking, Malabar Hill RSS Near Uphar Bldg.New Siri Road, Chiranjilal Loyalka Marg Mumbai 400 006.	23674865, 7208964352
14	LOVE GROVE	B.E.S. & T. Undertaking, Love Grove RSS Love Grove Pumping Stn., (MCGM) Dr. Annie Besant Rd. Worli, Mumbai 400 025.	24934567, 7208964368

15	PAREL	B.E.S. & T. Undertaking, Parel RSS BEST Officers Qtrs. Next to BMC School, Saibaba Rd. Mumabi 400 012.	24715839, 7208969010
16	BACKBAY 110KV	B.E.S. & T. Undertaking, Backbay 110kV RSS Backbay Veej Bhavan General Bhonsle Marg Mumbai 400 021.	22880948, 22843463 7208964102
17	WADALA	B.E.S. & T. Undertaking, Wadala RSS near BMC Salt Pan Ppg. Stn., Opp. Block No.212, C.G.S. Colony, Sector II, Antop Hill, Wadala(E), Mumbai 400 037.	24013716, 7208969015
18	WORLI	B.E.S. & T. Undertaking, Worli RSS Opp. Goodlas Nerolac Paint, Ganpatrao Kadam Marg, Mumbai 400 018.	24923853 7208964369
19	MARINE DRIVE	B.E.S. & T. Undertaking, Marine Drive RSS Near Marine Drive Plaza Hotel, Behind Yashodhan Bldg. Dinshaw Wacha Rd., Mumbai 400 004.	22027617, 7208964247
20	PRABHADEVI	B.E.S. & T. Undertaking, Prabhadevi RSS Opp. Passport Office, J.B. Temkar Marg, Worli, Mumbai 400 025.	24228367, 7208964371
21	HUTATMA CHOWK	B.E.S. & T. Undertaking, Hutatma Chowk RSS Janmabhoomi Marg, Off. Dr. D.N. Rd Hutatma Chowk, Fort Mumbai 400 001.	22024673, 7208964245
22	NARIMAN POINT 110KV	B.E.S. & T. Undertaking, Nariman Point 110Kv RSS Sakhar Bhavan, Ramnath Goyanka Marg Behind Oberoi Hotel, Nariman Point Mumbai 400 021.	22045011, 22044636 7208964103
23	NAVAL DOCKYARD	B.E.S. & T. Undertaking, Naval Dockyard RSS Naval Dockyard – M.R.S.S. Premises of Indian Navy, Lion Gate Shahid Bhagat Singh, Colaba Mumbai 00 023.	22665597, 7208964242
24	BOMBAY CENTRAL	B.E.S. & T. Undertaking, Bombay Central RSS, Potia Estate, Mumbai Central Bus Depot Bellasis Rd Mumbai 400 008.	23098439, 7208964355
25	CUMBALLA HILL	B.E.S. & T. Undertaking, Cumballa Hill RSS , Opp. Neelamber Bldg. Altamount Rd., Cumballa Hill Mumbai 26.	23511317, 7208964353
26	SITLADEVI	B.E.S. & T. Undertaking, Sitladevi RSS Prakash Narayan Kotnis Marg, Off. Lady Jamshedji Rd., Mahim Mumbai 400 016.	24461089 7208969017
27	WORLI DAIRY	B.E.S. & T. Undertaking, Worli Dairy RSS Near Manav Mandir Bldg. Acharya Atre Marg, Worli, Mumbai 400 018.	24920054, 7208964370
28	KHETWADI 110 KV	B.E.S. & T. Undertaking, Khetwadi 110kV RSS Khetwadi 10th Lane, Alfred Cinema Mumbai 400 004.	23853698, 3853683 23859417, 7208964104
29	MAHIM CAUSEWAY	B.E.S. & T. Undertaking, Mahim Causway RSS 1504, Near BMC Sewage Pumping Stn., Mahim Reclamation, Mahim Causway Rd., Mumbai 400 016.	24461082 7208969018

30	RAOLI HILL	B.E.S. & T. Undertaking, Raoli Hill RSS Premises of Raoli Hill Pumping Kokari Agar Rd., Antop Hill, Mumbai - 400 037.	24036639, 7208969021
31	MASJID	B.E.S. & T. Undertaking, Masjid RSS Ibrahim Merchant Rd.Khadak Street, Mumbai - 400 009.	23455259 7208964250
32	SION FORT	B.E.S. & T. Undertaking, Sion Fort RSS Opp. BMC School Sixteen Bungalow,Sion (E) Mumbai - 400 022.	24076096, 7208969022
33	MUMBADEVI	B.E.S. & T. Undertaking, Mumbadevi RSS Off. Kalbadevi Rd. Inside Mumbadevi BMC Compound, NearMumbadevi Temple, Mumbai - 400 002.	22421071 7208964251
34	SEWREE	B.E.S. & T. Undertaking, Sewree RSS Prabodhankar Thakre Udyan Bus Stn. Acharya Donde Marg, Sewree, Mumbai - 400 015.	24129336, 7208969012
35	G.T. HOSPITAL	B.E.S. & T. Undertaking, G.T. Hospital RSS,G.T. Hospital Compound,Badrudin Tayyabji Marg Opp. C.I.D. OfficeMumbai 400 001.	22672350, 7208964246
36	NEPEAN SEA	B.E.S. & T. Undertaking, Nepean Sea RSS Opp. Simla House, Near Godrej Baug, Off. Nepean Sea Rd Mumbai 400 036.	23677302, 7208964354
37	DHARAVI PMGP	B.E.S. & T. Undertaking, Dharavi PMGP-501 RSS Plot No.501, Shatabdi Nagar Lane Behind Shivaji Vidyalaya Gate, Dharavi – Mumbai - 400 017.	24078807, 7208969020
38	NAIR HOSPITAL	B.E.S. & T. Undertaking, Nair Hosp. RSS Behind Nurses Qtrs.Nair HospitalPremises, Dr. Anandrao L. Nair Rd., Mumbai 400 008.	23011057, 7208964363
39	DR. BABASAHEB AMBEDKAR 110KV	B.E.S. & T. Undertaking, Dr. BabaSaheb Ambedkar 110 KV RSS SenapatiBapat Marg, near Ambika Mill Bus ST, Mumbai- 400 013	24955083, 24955084 7208969029
40	KEM HOSPITAL	B.E.S. & T. Undertaking, KEM Hosp. RSS KEM Hospital Complex, S. S. Rao Road, Mumbai 400 012.	24157076, 7208969011
41	NESTLE	B.E.S. & T. Undertaking, Nestle RSS Nestle Compound, Near Bombay Dyeing Mill, Pandurang Budkar Marg, Mumbai 400 013.	24334629, 7208964372

42	NAVY NAGAR	B.E.S. & T. Undertaking, Navy Nagar RSS Near Kendriya Vidyalaya, Navy Nagar Mumbai 400 001.	22189000, 7208964105
43	POCHKANWALA ROAD	B.E.S. & T. Undertaking, Pochkanwala Rd. RSS,Plot no.-78 & 78A Police Constabulary Staff Qrts., Pochkhanwala Rd, Worli Mumbai 400 018.	24974517 7208969319
44	J.J. HOSPITAL	B.E.S. & T. Undertaking,J.J. Hospital RSS, J.J. Hospital premises, Ramchandra Bhatt Marg, Byculla, Mumbai 400 009.	23726431, 7208969030
45	MAZAGAON DOCK	B.E.S. & T. Undertaking, Mazagaon Dock RSS Resident Area,Opp. Angre House, Gate No.1, Dockyard Rd., Mazgaon, Mumbai 400 010.	23781444, 7208964365
46	TARDEO	B.E.S. & T. Undertaking, Tardeo RSS Pandey Compound bus Stn., Naik Chowk Tardeo, Mumbai 400 009	23523773, 7208969023
47	LALBAUG	B.E.S. & T. Undertaking, Lalbaug RSS Dattatraya Mahadev, Khamkar Marg, Lalbaug, Mumbai 400 012.	24713722, 7208969025
48	STANDARD MILL	B.E.S. & T. Undertaking, Standard Mill RSS, Appasaheb Marathe Marg, Prabhadevi, Mumbai 400 025.	24365264 7208969024
49	V.S.N.L.	B.E.S.T. Undertaking VSNL RSS Plot No – 1195 CS No. 77 Opp. Kirti College , K Dhuru Marg Prabhadevi Mumbai 400028	24313646 7208969317
50	SWAN MILL (SEWREE)	B.E.S. & T. Undertaking, Ashok garden (formely Swan Mill) Tokersi Jivraj Marg, sewree, Mumbai 400 015.	24188120, 7208969316
51	NIMKAR MARG	B.E.S. & T. Undertaking, Nimkar Marg, 33kV RSS Near Navjeevan Co.Op.Hsg.Soc.,R.S.Nimkar Marg, Tardeo Depot, Mumbai- 400 008.	23010339, 7208969026
52	SIMPLEX MILL	B.E.S. & T. Undertaking, Simplex Mill RSS Godrej planet keshavrao khadye Marg, Byculla, Mumbai-400 011	23020440 7208969027
53	ELPHINSTONE MILL	B.E.S. & T. Undertaking, Elphinstone 33kv RSS, India Bulls finance Corp., Senapati Bapat marg, Mumbai 400 013.	24338111 7208969318
54	MAZAGAON SHIPYARD NORTH	B.E.S. & T. Undertaking, Mazgaon Morlernisation Project, dockyard,Mazgaon Mumbai 400 010.	HT Consumer

55	APOLLO MILL	B.E.S. & T. Undertaking, Apollo Mill RSS, Lodha Primero, N.M.Joshi Marg, Chinchpokli (E) Mumbai-400 011.	22942445 7208969028
56	MORARJEE MILL	B.E.S. & T. Undertaking, Morarjee Mill 33 kv DSS Ashoka Tower ( centrepoint ) Dr. B.A. Road, Parel Mumbai 400012.	HT Consumer
57	FUTUREX 33 KV RSS	B.E.S. & T. Undertaking, Futurex 33 kv RSS N.M.Joshi Marg, Lower Parel Mumbai 400013.	HT Consumer
58	PENINSULA LAND	B.E.S. & T. Undertaking, Peninsula 33 kv RSS. Ganpatrao Kadam Marg, Lower Parel, Mumbai 400013.	HT Consumer
59	JALAN MILL	B.E.S. & T. Undertaking, Ganpatrao Kadam Marg, Lower Parel, Mumbai- 400013.	HT Consumer
60	NAMAN MID - TOWN 33 KV DSS	B.E.S. & T. Undertaking, Behind kamgar krida Bhavan, Senapati Bapat Marg, Mumbai 400028.	HT Consumer
61	AVIGHNA 33 KV DSS	B.E.S. & T. Undertaking, New Islam mill compound Mahadeo Palav marg, Mumbai 400012.	HT Consumer
62	MAZGAON SHIPYARD RSS	B.E.S. & T. Undertaking, In the premises of Mazgaon Dock Ltd., South Yard, City Survey No. 247, Kussara Bunder, Mazgaon Dock, Mumbai – 400 010	HT Consumer
63	PRATIKSHA NAGAR	B.E.S. & T. Undertaking, Plot / CS no. 4 (Pt), In front of Mala Garden, Pratiksha Nagar, Sion Mumbai-400 022	HT Consumer
64	LODHA CROWN T-6	B.E.S.&T. Undertaking, New Cuffe Parade, In premises of Lodha Crown Building Pvt. Ltd. Building C, Wadala Truck Terminal, Anik Wadala Road, Mumbai - 400 37	HT Consumer

-----X-----



**Ward Wise Identified Low Lying Flooding Prone Areas**

Sr. No.	Ward	Name of Road	Location
	A	<b>Geeta Nagar</b>	--
1		Opp. Church	Near E.P. GNP-7
2		Near E.P. No. GNP/9	--
3		Opp. Geeta Nagar Library	Near E.P. GNP/29
4		Near Geeta Nagar School	Near E.P. No. GNP/35
		<b>Ambedkar Punarvasan</b>	--
5		Shri Sonu Kamble	Galli No. 3
6		Shri Sangram Suryavanshi	Galli No. 4
7		Near Saibaba Temple	--
		<b>Ganesh Murti Nagar</b>	Near opp. MP501, 503 & 504
8		Shri Ratilal Sharma	Galli No. 3
9		Near Nagori Barib Nawaz Milk Center	Galli No. 5
10	B	Meisheri Road	Opp. Sandhurst Road Station (Nityanand Hotel)
11		Chinch Bunder B.I.T. Chawl	Chawl No. 5, 6, 7, 8
12		Mohammed Ali Road	Sydneham Compound
13	C	S.V.P. Road	Between Moli Talkies & Mirza Ghalib Market
14		C.P. Tank	Yagnik Chowk towards V.P. Road
15		Maulana Azad Road	Gol Temple to Yagnik Chowk
16		Eraskin Road	Yagnik Chowk to rear of Mirza Ghalib Market
17		Mitrasen Mahimtura Marg	Full Road
18		Sant Sena Marg	Full Road
19		Trimbak Parshuram Road	Full Road
20		Durgadevi Road	Joint of Trimbak Parshuram Road to Jn. of Mitrasen Mahimtura Marg
21	D	Petit Hall	Nepean Sea Road
22		Kashinath Compound	Nepean Sea Road
23		Oomer Park	Bhulabhai Desai Road
24		Breach Candy Hospital	Bhulabhai Desai Road
25		Nana Chowk	Nana Chowk Junction
26		Tardeo Circle	Tardeo Circle
27		Hotel Drum Beat	Tardeo Road
28		Grant Road Railway Station	Sleater Road
29		Band Stand, Chowpatty	Babulnath Road
30		Grant Road Railway Station (West)	Near Sonawala Bldg.
31		Alankar Cinema Junction	S.V.P. Road
32		Khetwadi Area, Khetwadi Back Road	R.R. Road
33		R.S. Nimkar Marg	--
34		Pande Girls High School	Patthe Bapurao Bridge Low Level
35		Crystal Hotel	Gilder Lane

36	E	J.J. Road	Opp. Police Station
37		Palace Cinema	--
38		T.B. Kadam Marg	Junction of B.A. Road
39		Dattaram Lad Marg	Junction of B.A. Road
40		Br. Nathpai Road	Albery Chowk
41		Sant Savata Low Level	--
42		Shravan Yashwante Chowk	Kalachowky
43		Shravan Yashwante Chowk	Kalachowky
44		Motisha Lane	Opp. Byculla Police Station
45		Hindustan Masjid	Byculla
46		Sankli Street	Jn. II & III Sankli Street
47		Nair Road	Agripada Police Station
48		Maratha Mandir Road	Bombay Central
49		Belasis Road	Alexandra Cinema
50	Chinchpokali Railway Station	--	
51	F/S	Hindmata Cinema	Dr. B.A. Road
52		Jagannath Dhatankar Marg	--
53		Dattaram Khamkar Marg	--
54		Kalachowky near Sardar Hotel	Dr. B.A. Road
55		Zakeria Bunder	Cross Gully
56		Vitthal Chavan Marg	--
57		Dadasaheb Phalke Road	--
58		R.A. Kidwai Road	Junction Road No. 26
59		Sewree Cross Road, Gate No. 7	--
60	F/N	Laxmibai Kelkar Rd (Gandhi Market)	--
61		R.A. Kidwai Road, Wadala	Gate No. 4, Mangale Society
62		Dadar T.T. Circle	Junction of Tilak Rd & Jama Jamshet Rd
63		Vachharaj Lane	--
64		Mukhyadhapak Bhavan Rd No.6, Sion	--
65		Rajyogi Jaimai Singh Road	Gurunanak School
66		Bhau Daji Road (below bridge)	--
67		Hindu Colony, Lakhamshi NapooRd	--
68		Road No. 16, Near LeprosyHospital	
69		Jayshankar Yagnik Road	Behind Gandhi Market
70		Shanti Nagar Slum	--
71		Koraba Mithagar Slum	--
72	G/S	N.M. Joshi Marg	Jagusheth Chawl , near curry road west JN
73		Fitwala Road	Nr. Elphiston Rd Rly Stn
74		Balushet Madurkar Marg	--
75		N.M. Joshi Marg	Gawade Chowk to Railway Workshop
76		Sakhubai Mohite Marg	N.M. Joshi Marg, B.D.D. Chawls
77		Pandurang Budhkar Marg	Near Gopal Nagar
78		Worli Naka	Near Prem Nagar
79		S.S. Amritwar Marg	Near Nehru Nagar
80		Khan Abdul Gaffar Khan Road	Near Godrej
81		G/N	T.H. Kataria Marg (East)
82	Veer Savarkar & L.J. Road Junction		Near Mahim Church
83	M.G Rd., Dharavi		Dharavi transit camp, Laxmibaug
84	Andhra valley Rd.		Matunga labour camp.

-----X-----

**The reporting protocol for interruption of Electric supply due to  
System Failure / Disaster**

<b>Sr. No.</b>	<b>Nature of Off Supply/Disaster</b>	<b>Informing person</b>	<b>To be informed</b>	<b>Remark</b>
1	Off supply due to service cut out burnt, service failure, individual OffSupply, Partial Area/ Area off supply due to distributor/ service cable failure, 11/22/33 KV feeder tripping.	Fuse Controller, Fault Controller, Supervisory/ System / zcc controller	Regular Off Supply crew i.e. Fuseman, Mains Engineer & Fault Engineer.	Immediate actionfor restoration of supply by all concerned.
2	Off supply after 2 hrs. up to 4 hrs due to service cut out burnt, servicefailure, individual Off Supply, Partial Area/ Area off supply due to distributor/ service cable failure,11/22/33 KV feeder tripping.	Supervisory/ System / zcc controller	Concerned Divisional Engineersand above.	Concerned Divisional Engineer will post the details on VIP Whatsapp Group.
3	Off supply after 4 hrs. up to 6 hrs. due to service cut out burnt, service failure,individual Off Supply, Partial Area/Area off supply due to distributor/service cable failure, 11/22/33 KV feeder tripping.	Concerned Divisional Engineers	DCEDS, DCEDN, CEM, AGMES	Concerned Divisional Engineer will post the details on VIP WhatsApp Group.
4	Off supply above 6 hrs. due to service cut out burnt, service failure,individual Off Supply, Partial Area/Area off supply due to distributor/service cable failure, 11/22/33 KV feeder tripping.	DCEDS, DCEDN	CEM, AGMES	Concerned Divisional Engineer will post the details on VIP WhatsApp Group.
5	Switching OFF DSS due to water logging / flooding for safety measures.	DCEDS, DCEDN	CEM, AGMES, GM	Concerned Divisional Engineer will post the details on VIP Whatsapp Group.

6	Building collapse / Fire to building / Fatal/ Non-Fatal electrical accident.	Supervisory/ System / zcc controller	Concerned Divisional Engineers and above.	Concerned Divisional Engineer will post the details on VIP Whatsapp Group.
7	Building collapse / Fire to building / Fatal / Non-Fatal electrical accident.	DCEDN, DCEDS	CEM, AGMES, GM	Concerned Divisional Engineer will post the details on VIP Whatsapp Group.
8	Major Off Supply due to multiple faults at one DSS / nearby DSSs resulting in DSS hanging.	Supervisory/ System / zcc controller	Concerned Divisional Engineers and above.	Concerned Divisional Engineer will post the details on VIP Whatsapp Group.
9	Major Off Supply due to multiple faults at one DSS / nearby DSSs resulting in DSS hanging.	DCEDS, DCEDN	CEM, AGMES, GM	Concerned Divisional Engineer will post the details on VIP Whatsapp Group.
10	TPC failure / Grid failure / Off Supply for entire south/ north / entire Mumbai city due to any type of Disaster.	Supervisory/ System / zcc controller	Concerned Divisional Engineers and above.	Concerned Divisional Engineer will post the details on VIP Whatsapp Group.
11	TPC failure / Grid failure / Off Supply for entire south/ north / entire Mumbai city due to any type of Disaster.	CEM	AGMES, GM	Concerned Divisional Engineer will post the details on VIP Whatsapp Group.
12	TPC failure / Grid failure / Off Supply for entire south/ north / entire Mumbai city due to any type of Disaster.	GM	Municipal Commissioner, Energy Minister, Chief Minister	Concerned Divisional Engineer will post the details on VIP Whatsapp Group.

-----X-----

Names & Contact nos. of the Officers of Electric Supply Branch to be contacted during the emergency / disastrous conditions Operations & Maintenance Department (OFF supply)

Name	Designation	Coverage Area	Contact no.	Mobile No. / Resi. No. / Email id.
Naik A.V..	Chief Engineer (Maintenance)	HOD for off supply Complaints for Mumbai City	22840942 22883280	9869427564 9833729735
			<a href="mailto:cem@bestundertaking.com">cem@bestundertaking.com</a>	
Fulpagare S.V.	Deputy Chief Engineer Distribution South	For Mumbai City (South Division ) Off Supply Complaints	22154428 22153486 Ext. 102	9869870154
			<a href="mailto:dceds@bestunderking.com">dceds@bestunderking.com</a>	
Chandankar G.G	Deputy Chief Engineer Distribution North	For Mumbai City ( North Division ) Off Supply Complaints	24102929	9757435560
			<a href="mailto:dcedn@bestunderking.com">dcedn@bestunderking.com</a>	
Khadke Y. N..	Divisional Engineer Operation & Maintenance Central North	Byculla, Lalbaug, Mazgaon, Reay Road, Haji Ali, Worli Gaon, Lower Parel, Mahalaxmi, Mumbai Central, Aurther Road	24121740 24120301	9819908070
			<a href="mailto:demcn@bestundertaking.com">demcn@bestundertaking.com</a>	
Gunjal P.D.	Divisional Engineer Operation & Maintenance North East	Parel, Kalachowki, Dadar, Kings Circle, Wadala, Antop Hill, Gandhi Market, Sion-Chunabhatti	24016611 24012951	9869137380
			<a href="mailto:demne@bestundertaking.com">demne@bestundertaking.com</a>	
Deshmukh D.S.	Divisional Engineer Operation & Maintenance North West	Prabhadevi, Parel ST depot, Kabutar Khana, Shivaji Park, Shitaladevi, Mumbai Causeway, Dharavi, Matunga	24120301	9969007861
			<a href="mailto:demnw@bestundertaking.com">demnw@bestundertaking.com</a>	
Dedhiyal G.S.	Divisional Engineer Operation & Maintenance South	Navy Nagar, Nariman Point, Backbay, Marine Lines, Colaba, Crawford Market	22154428	816934186
			<a href="mailto:dems@bestundertaking.com">dems@bestundertaking.com</a>	
Sayani M.R.A.	Divisional Engineer Operation & Maintenance Central South	Mo. Ali Rd., Girgaon, Mumbadevi, Malabar Hill, Neapeansea Rd., Grant Rd., Khetwadi, Dockyard Rd., Nagpada	22073875	9967278634
			<a href="mailto:demcs@bestundertaking.com">demcs@bestundertaking.com</a>	

**Names & Contact nos. of the Officers of Electric Supply Branch  
to be contacted during the emergency / disastrous conditions  
Customer care Department ( Complaints )**

Name	Designation	Coverage Area	Contact No.	Mobile No. / Resi. No. / Email id
Dr. Patsute R.D.	Chief Engineer Customer Care	A, B, C, D E, FN, FS, GN & GS Wards	22799563	9869405910
			<a href="mailto:cecc@bestundertaking.com">cecc@bestundertaking.com</a>	
Shaikh B.A.W.	Deputy Chief Engineer Customer Care South	A,B,C & D Wards	22799512 228556262 Ext. no. 503	9967915094
			<a href="mailto:dceccs@bestundertaking.Com">dceccs@bestundertaking. Com</a>	
Patil R.B.	Deputy Chief Engineer Customer Care North	E, FN, FS, GN & GS Wards	24194681 24146262 Ext. 681	9833354391
			<a href="mailto:dceccne@bestundertaking.com">dceccne@bestundertaking.com</a> <a href="mailto:dceccnw@bestundertaking.com">dceccnw@bestundertaking.com</a>	

**Street Lighting Department (Complaints )**

Deshmukh G.D.	Deputy Chief Engineer Street Lighting dept.	A, B, C, D E, FN, FS, GN & GS Wards	24116023 Ext. 503	9819732911
			<a href="mailto:dcesl@bestundertaking.com">dcesl@bestundertaking.com</a>	
Deshmukh R.J.	Divisional Engineer Street Lighting Maintenance	A, B, C, D E, FN, FS, GN & GS Wards	24101691 24123969 Ext. 501	9987042071
			23781839 23711942 Ext. 801	

-----X-----