

**THE BRIHANMUMBAI ELECTRIC SUPPLY
AND TRANSPORT UNDERTAKING
(Of The Brihanmumbai Mahanagarpalika)**



**DISASTER MANAGEMENT PROTOCOL
BOOKLET 2023-2024
(ELECTRIC SUPPLY DIVISION)**

INDEX

<u>Sr. No.</u>	<u>Description</u>	<u>Annex. No</u>	<u>Page No</u>
1.	Introduction	--	1 to 7
2.	Operation & Maintenance Zones & MCGM Wards Map of Mumbai	I	8
3.	Map showing power supply arrangement for BEST Undertaking	II	10
4.	List of officers of Operation & Maintenance Division	III	12 to 15
5.	A Grade officers (A 4 & A 5) residing in our area of Electric supply	IV	18 to 16
6.	List of Essential feeders	V	17 to 26
7.	Booking of A & B Grade officers at various receiving stations during emergency / Disaster of large magnitude	VI	27 to 28
8.	Electric Supply – Address & Telephone Numbers of Senior Officers (Grade A 3 & above)	VII	29 to 35
9.	Address & phone nos. of Receiving Sub-stations	VIII	36 to 40
10.	Ward Wise Identified Low Lying Flooding Prone Areas	IX	41 to 43
11.	The reporting protocol for interruption of Electric supply due to System Failure / Disaster	--	44 to 45
12.	Off Supply Complaints Operation & Maintenance Division	--	46
13.	Customer Care Division (Complaints) Street Lighting (Complaints)	--	47

Brihanmumbai Electric Supply and Transport Undertaking (BEST) distribute electric supply within the old city limits of Mumbai and runs Public Transport in the Greater Mumbai region. This write up is about the Disaster Management Plans for the Electric Supply Distribution.

2. **Introduction:**

BEST gets all the power from M/s. Tata Power Company at 110 kV, 33 kV or 22 kV and distributes the Energy from Colaba to Haji Ali / Byculla / Mumbai Central in South zone and Mumbai Central / Byculla / Haji Ali to Sion, Chunabhatti / Mahim in North zone as shown in **Annexure – I**. A map showing the power system arrangement is attached as **Annexure –II**. The statistical data of Receiving Substations, Distribution Substations, Cables & Consumers etc. in Electric Supply Division as on 31st March 2023 is as follows :-

Description	Numbers
Nos. of Receiving Sub Stations	65
Nos. of Power Transformers	155
Nos. of Distribution Sub Stations	2507
Nos. of Distribution Transformers	3430
Length Of Cable (EHV / HV / LV in kms)	12,338
Nos. of Consumers in Lacs.	10.49

To avoid failure of electric supply even for few minutes, BEST has evolved very systematic and time-tested procedures and arrangements for attending to all types of breakdowns.

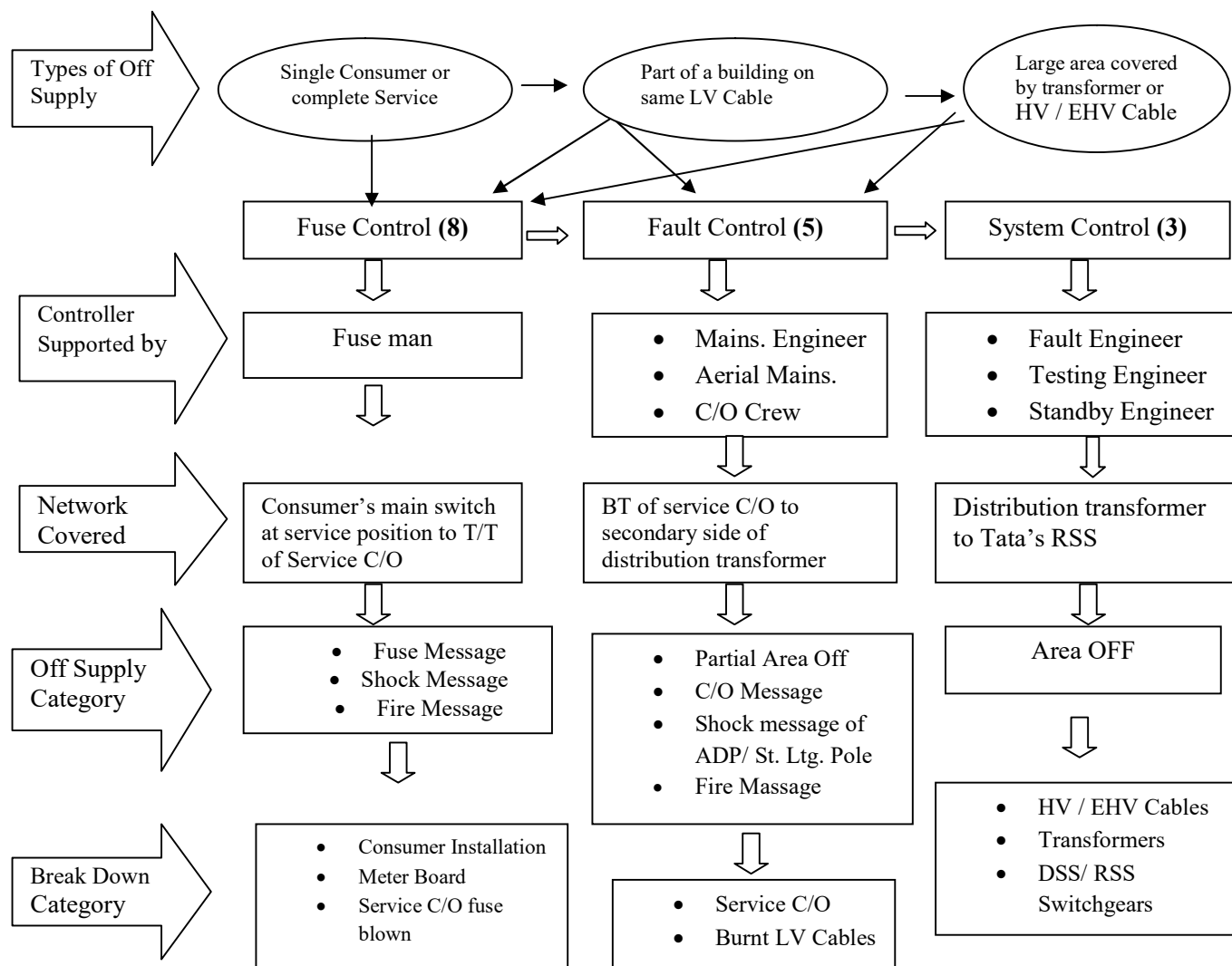
It is our experience that major floods occur in Mumbai once or twice in some years, when there will be innumerable breakdowns. In such cases, we divert officials from other non-emergency departments to deal with the situation. The BEST operation and maintenance system is capable of dealing with all the increased breakdowns, though the restoration of supply will take some more time during disaster situation such as flood & fire situations. Also, in cases such as floods, fire etc. there will be contradictory requirement of switching off supply to the areas affected by shocks, fire etc. and restoring supply when these conditions subside. Hence the nature of actions to be taken varies from situation to situation, and calls for discretion and judgment by experienced engineers. With the present set up of control centers and operating personnel with vehicles, BEST is in a position to deal with these situations if necessary by diverting additional staff from non-emergency departments. This is possible, because Electric Supply Branch ensures that all the technical personnel are trained for emergency jobs, by a flexible transfer policy.

For enabling the control centers to arrive at the correct decision on action, it will be highly beneficial if the consumers are in a position to give information on the extend of supply failure, i.e. whether only their building is affected, or more buildings are affected or the entire area is affected. If the consumer gives wrong information, it may delay the restoration, as the different section personnel may get deployed for the job initially. In case of tripping in receiving stations, the controls will automatically get information through the SCADA system, and Fault Engineer will move into action.

3.0 Co-ordinated functioning of various Control Rooms for faster restoration of Electric Supply

We have three types of Control Rooms viz. System / Supervisory Controls, Fault Controls and Fuse Controls. The schematic showing the movement of OFF Supply messages through these Control Rooms, to the respective sections which have to take actions for restoration of supply, is as follows -:

Co-ordinating functioning of various Control Rooms for faster restoration of Electric Supply



From the operational point of view, the Operation & Maintenance department of the Electric Supply Division of BEST is divided into five Zones viz. South Zone, Central South Zone, North West Zone, North East Zone and Central North Zone.

The main control rooms of Electric Supply Division are divided mainly into 3 controls, i.e. System Control in South zone covering the entire operations of the South & Central South zone from Colaba to Mumbai Central / Byculla / Haji Ali and Supervisory Control in North zone covering the entire operations of the North West , North East i.e. Haji Ali to Chunabhatti / Mahim / Wadala / Sion & Zonal Control Center (ZCC) covering the entire operations of Central North zones i.e. from Byculla / Haji Ali / Mumbai Central to Lalbaug -Worli, Byculla. These three are the highest Control Centers, but as a routine, they look after only High Voltage system operations / breakdowns and reporting to management on all aspects of the system by taking input from other controls downstream.

These Controls are manned by the Super Controller (Superintendent / Asst. Engineer) / System Controller & Supervisory Controller (Dy. Engineers) respectively. They are assisted by Assistant Controllers (Charge Engineers). Both the Controller & Assistant Controller working in all the three shifts round o' clock. System / Supervisory & Zonal Control Center Controller mainly deals with the communication with the Fault Engineers and Mains Engineers and reporting to Sr. Officers. Controller / Asst. Controller are carry out the duties of receiving messages, writing messages, computerized reports and follow up with the operational staff and taking feedbacks. The Offices of Operation & Maintenance Departments are situated nearer to these Control Rooms in both the zones.

For restoration of Electric Supply, we have 8 (eight) fuse Controls, 5 (five) Fault Controls and 3 (three) System / Supervisory / Zonal Control Centers established and all details along with locations and telephone nos. are furnished.

All types of emergencies involving Receiving Sub-stations and Distribution Sub-stations are conveyed to the Fault Engineers working in all the three shifts through System Control, Supervisory Control & Zonal Control Center.

All other breakdowns and problems in the low voltage systems like supply failures, shock, fire, restoration of the off supply areas by giving temporary supply etc. are attended by Mains Engineers who are deployed through Fault Controls in all the three shifts. The Fuse Control deploys Fuse men who can attend to supply failures due to blowing of fuses at meter rooms of the consumers, and problems connected with meters. They also take action in case of fire, shock, water falling at Service position etc. on the meter boards and in the installation. All the control rooms have the system of lodging all the messages received and feedback of attending the message is also recorded in the respective controls. There is a system of reporting all the major messages to the senior officers of the Electric Supply Branch, every morning and also during the working day and holidays round the clock.

For cases of OFF Supply durations exceeding 2 hours, there are well defined instructions for escalating the matter to senior officers, which are as follows :-

OFF Supply Duration	Escalation
2 to 4 Hours	Concern Assistant Engineer / Superintendent Engineer of respective O & M Department
4 to 6 Hours	Divisional Engineer of respective O & M Department
Above 6 Hours	Deputy Chief Engineer of respective O & M Department & other Senior Officers

The telephone numbers of various control centers, for electric supply restoration and emergency messages jobs of BEST, are given below. The last 4 digit numbers of these control centers are unique and hence can be remembered easily by contacting personnel.

South Zone: (Colaba to Mumbai Central / Byculla / Haji Ali)

South Control		22083788, 22085888, 22078865, 8828830281 (WHATSAPP) 7304456077 (SMS/MISSED CALL)
Fault Control Pathakwadi (S/CS)		22066611, 22066661, 22087234, 7208964081, 7304456078, 8097585149 (O/I), 8828847561(WHATSAPP) 8828871642 (SMS/MISSED CALL)
Fuse Control	<u>Pathakwadi</u>	22084242, 22084243, 22066351, 8097585140 (O/I), 8828847565 (SMS/MISSED CALL)
	<u>Colaba</u>	22184242, 22156749, 22156748, 8828871649 SMS/ WhatsApp), 7304456083.
	<u>Masjid</u>	7304456089, 23454297, 23474242, 23454297, 23474010, 8828871650(WHATSAPP)
	<u>Tardeo</u>	23094242, 23018169, 8828871647, 72089464092, 7304456090 (SMS)

North Zone: (Parel/Worli/Haji Ali/Sewree to Sion Chunabhatti/Mahim/Dharavi)

Supervisory Control		24144891, 24186200, 24144897, 24145888, 7304456079, 8828830288, (Whatsapp)	
Fault Control	<u>Dadar (N/E)</u>	<u>New Mahim (at Mahim RSS) (N/W)</u>	<u>Dharavi (at Dharavi Bus Depot)</u>
	24146611, 24146683, 24123817, 7208992913, 8657045026, 8828871656(WA)	24326611, 24326612, 24326613, 8828847562 (Whatsapp), 8097585161	8657448060, 86578061, 8097585173, 72 08964097 8097585485, 8828871651 (Whatsapp)
Fuse Control	<u>Dadar</u>	24124242, 24123162, 24124993 7304456091, 8828847563	
	<u>Mahim</u>	24444242, 24314242, 24314240, 8657448060, 8657448061, 8828871657 (Whatsapp)	
	<u>Worli</u>	24954242, 24953363, 7304456092 8828847567 (Whatsapp)	
	<u>Suparibaug</u>	24114242, 24161217, 24117736, 24117732, 24117734, 24117731, 8097585159, 8097585159, 8828871641 (Whatsapp), 8828871655(WA)	

Central North Zone : (Byculla / Haji Ali / Mumbai Central to Lalbaug / Worli)

<u>Zonal Control Central North ZCC (CN)</u>	24975888, 24962122, 24962133, 7208964101, 7208992921, 7208992923, 8097585168, 8827730286(Whatsapp)	
<u>Fault Control Dadar (CN)</u>	24186611, 24117753, 24117754, 24907007 7208992927, 8828847568 (Whatsapp)	
<u>Fuse Control</u>	Worli	24186611, 24117753, 24117754, 24907007 7208992927, 8828847568 (Whatsapp)
	Suparibaug	24114242, 24161217, 7208934728 7208934730, 8828871641 (Whatsapp)
<u>BEST Twitter Account :-</u>	@ my BEST Electric	

4.0 Contingency Plans for major failures:

The Contingency Plans for faster restoration of electric supply in case of all the EHV feeders and Power Transformers, showing the network operations to be carried out, are well documented and are being updated time to time.

In case of major failures brought about by man-made or natural disasters, the priority will be for safe guarding the Distribution System to prevent shock, fire, etc. by switching off and isolating switch points wherever required, and restoration of supply to essential consumers like hospitals and municipal pumping station. A list of such essential feeders / consumers is attached as **Annexure – V**

5.0 Preparations prior to Monsoon Season:

As a precautionary measure, prior to start of the monsoon season the various activities are being carried out by Operation & Maintenance Department, in order to safeguard the Receiving Substation (RSS) and Distribution Substations (DSS) and the equipments therein. The list of such activities is given below:-

- i) As regards the ADP's, Distribution Transformers, Distribution Sub Stations and Receiving Sub Stations in low laying flooding areas.
 - a) We have identified flooding prone areas and roads in our area of supply. In such areas when water level rises, electric supply is disconnected selectively in order to avoid loss of life due to electrocution. In this situation, continuous monitoring of water level is being done by our Controls in co-ordination with MCGM and Fire Brigade.
 - b) After the water level recedes, electric supply to such areas is being restored in a gradual manner. List of identified low lying flooding prone areas is attached vide **Annexure IX.**

In case of dilapidated substations which require repairs, are monitored continuously and in case of substation failure, alternate arrangements of supply restorations are made.

- ii) Roof cleaning of RSS and DSS.
- iii) Inspection of storm water drains of RSS and letters to MCGM for cleaning the same, if necessary.
- iv) Inspection of DSS where in previous year the problem of water leakages were observed and inform the same to Civil Engineering Department of the Undertaking.
- v) Provision of tarpaulin, Backlit sheets above the equipments wherever necessary.
- vi) Providing heaters in RSS where there is a problem of moisture absorption in the bus bar compartment of switchgears, to avoid flashover.
- vii) Advertisement in the local newspapers for precautions to be taken during the monsoon season of their installations and service position and the necessary information regarding the contact personnel about the registering the complaints to controls in their respective areas.

6.0 Stand-by arrangement of officers for emergency duties:-

The Electric Supply Division is presently headed by Assistant General Manager (Electric Supply). He reports to the General Manager of the Undertaking. AGM (ES) is assisted by 4 Chief Engineers viz. Chief Engineer (Maintenance & Works), Chief Engineer (Customer Care), Chief Engineer (Regulatory) & Chief Engineer (Planning). Most of the technical personnel in Electric Supply Branch get trained for emergency and maintenance activities. All the Senior Officials of Electric Supply branch of BEST, especially those heading the Operation and Maintenance Departments under them, are available for assistance for round the clock and as we say in BEST, "all officers are on duty for 24 hours". The names and telephone numbers of officers of

Operation & Maintenance departments, directly concerned with the restoration of supply in case of breakdowns and emergencies, are given in **Annexure – III**.

The Names and Telephone nos. of A Grade Officers, who reside in City limits are given in **Annexure – IV**.

The Electric Supply Division is also having a plan for posting the officers in Grade A-4 and A-5, in addition to the officers posted at various Receiving Substations for 24 hours in case of emergency. The list of such 'A' & 'B' Grade officers is given in **Annexure – VI**. Telephone numbers of all the Senior Officers from AGM (ES) to Divisional Engineers are given in **Annexure – VII**. The list of Receiving Substations with phone numbers is given in **Annexure – VIII**. The ward wise identified low lying flooding prone areas are given in **Annexure – IX**

7.0 **Co-ordinating Officers at MCGM Control Room in case of Disaster :**

The co-ordinating officer who will report to Disaster Management Control (DMC) Room of Municipal Corporation of Greater Mumbai at their Headquarters and who will be coordinating with BEST Officers, are as follows:

<u>DISASTER CONTROL BOOKING – 2023</u>				
<u>Co-ordinating officers :</u>				
Sr.No	Name	Designation	Department	Office Nos. / Mobile No
1.	Shri. B. S. Kamble	Asst. Engr.	Customer Care 'B' Ward	9869034874 22799541
2.	Shri D.R. Chormale	Asst. Engr.	Construction	9867998639 24165188
3.	Shri M.K. Anwar	Supdt.	Customer Care 'E' Ward	9869222159, 23002597 Ext. 555
4.	Shri T.N. Shekokar	Asst. Engr.	Erection (S)	9967538721, 23711943 Ext. 701
5.	Shri. S.R. Deshmukh	Asst. Engr.	Customer Care 'D' Ward	9987096135 23026803
6.	Shri. A.B.Shinde	Supdt.	Operation & Maintenance (CS)	9869454302 22080524 Ext. 743

8.0 **Protocol for activating Disaster Management Plan:**

It can be seen that BEST is an organization well prepared to meet all types of emergencies. One can be sure that Electric Supply Wing of BEST will carry out whatever is expected of it, as dictated / compelled by the nature of the disaster and the needs of the situation.

The message received from the Disaster Management Control Room of MCGM or from any other agency to the System/Supervisory Control & Zonal Control Center will be conveyed immediately to the Operational Staff for their action and to the Senior Officers of Electric Supply Division. The details of message and timing of receipt of message will be lodged in respective Control Rooms.

Depending upon the nature of emergency such as fire, flood, collapse of dilapidated building due to heavy rain etc., the fault engineers, mains engineers, will rush to the sites and the 'A' Grade Officers in-charge as mentioned in **Annexure – IV** will take charge of the situation at site for giving necessary instructions to the staff. The main function of this staff at site is to switch off the electric supply of the affected areas in order to avoid the further damages. The Officers at site, i.e. Fault engineers, Mains engineers will be always in co-ordination with the respective Control Rooms with

wireless sets fitted in vehicles, static Wireless sets in Control Room, walky-talky etc. Depending upon the severity of incidence, the emergency officers mentioned in **Annexure-VI** will be booked at the respective RSS, fault controls and fuse controls for co-ordination with the operating staff and the consumers.

During the emergency the System Control Room in South zone and Supervisory Control Room in North zone will be headed by the Dy. Chief Engineer (Distribution South) and Dy. Chief Engineer (Distribution North) respectively who will have the overall control over the Control Rooms and operation of the staff. They will be also in contact with the Police, Fire brigade and MCGM authorities for their help. The Divisional Engineers of non-emergency department like Erection, Construction divisions will have a monitoring role during the emergency over the operations of the staff under their divisions. The vehicles of these divisions will also be utilized for emergency duties after attending the emergencies; the necessary feedback will be given by Operational Staff to the Control Room, which will be conveyed to all Senior Officers of Electric Supply Division and the General Manager. The next step will be the restoration of the electric supply, whenever the situation is normalized.

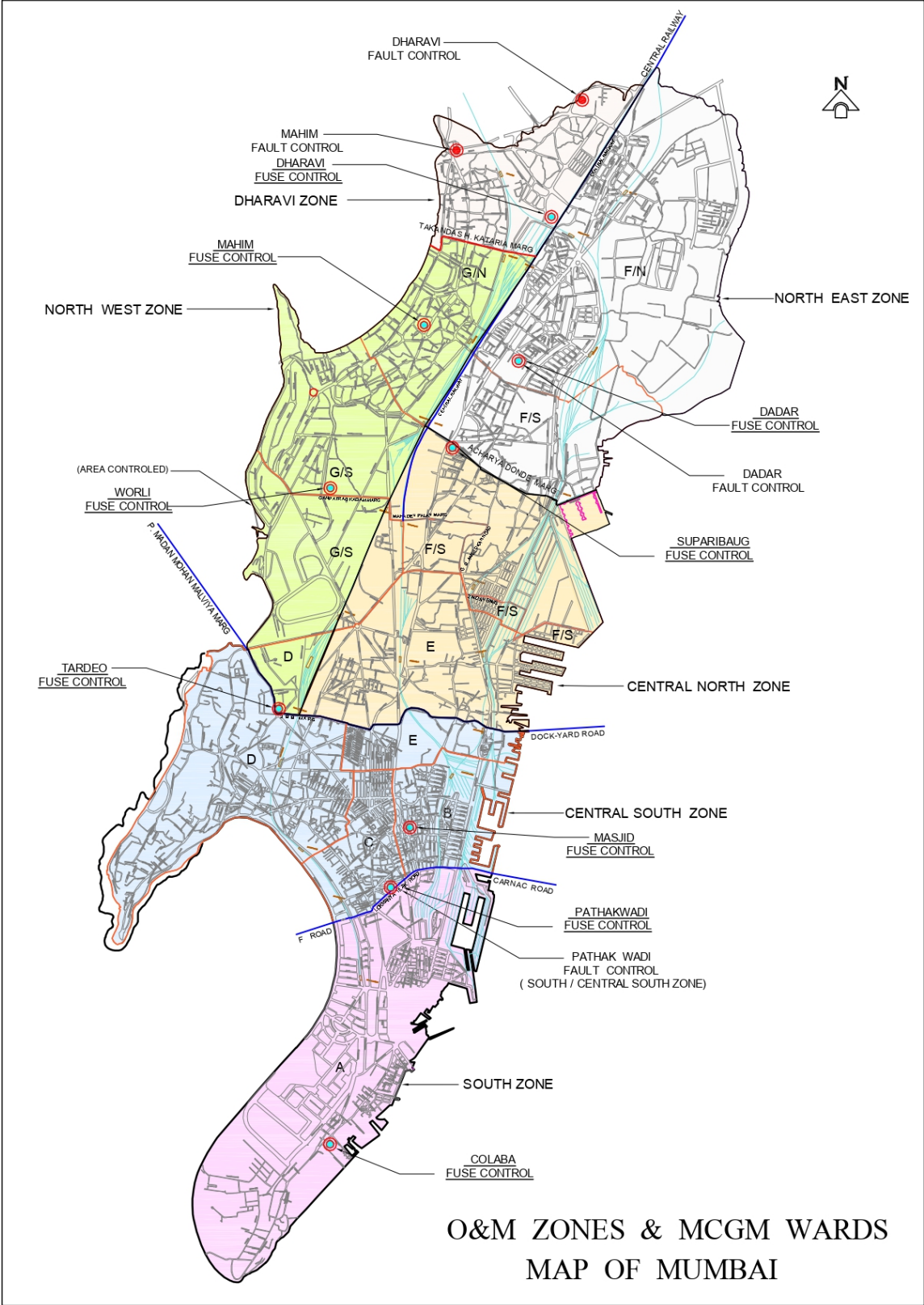
9.0 **Communication**

Communication is one of the important aspects in any Disaster Management. All the 64 RSSs are provided with MTNL Telephone Lines. The Supervisory Control, System Control, Zonal Control Center & Fault Controls are provided with MTNL, Tata telephone lines, the static wireless sets and hot lines. The emergency vehicles are fitted with wireless sets. Walky-talky sets are also provided to fault engineers.

10.0 **Redundancy**

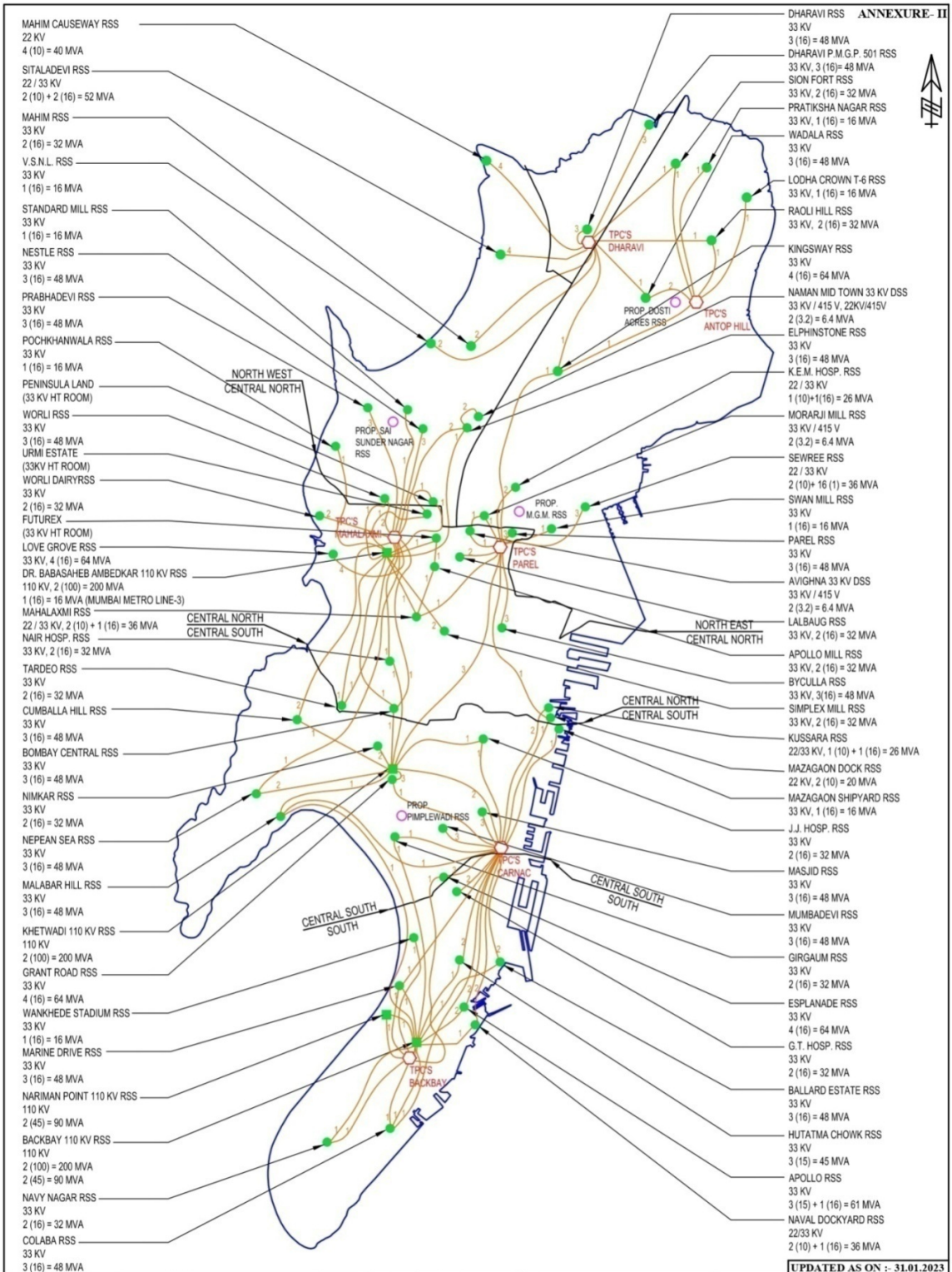
The redundancy in the electrical system is required to be built so that enough spare capacity is available whenever there is a non-availability of equipment and cables, due to faults or outages due to normal maintenance. The Electric Supply Division has its norms well defined in order to maintain the reliability of the Electric Supply. The sufficient redundancy is provided in HV / LV networks in order to transfer the loads and to minimize interruption of supply. This is achieved by the optimum loading of distribution and power transformers keeping down the low distribution loss. The Electric Supply division is also maintaining the sufficient stock of various equipments, which are being utilized in case of emergency for replacement of faulty equipments for distribution of electricity to the consumers. Depending upon the consumption level, the tenders are invited for procurement of various types of equipments annually or biennial.

However, in the event of any tripping of Tata Power Generating Units or failure of any EHV Transmission Lines feeding BEST's Distribution Network in Island City of Mumbai, there may be electricity supply failure in the BEST's area of supply for certain duration.



O&M ZONES & MCGM WARDS
MAP OF MUMBAI

ANNEXURE-II



LEGENDS: ● BEST EXISTING 22/33 KV REC. SUB-STN. ○ BEST PROPOSED REC. SUB-STN. ■ BEST EXISTING 110 KV REC. SUB-STN. ○ TPC'S 110 KV REC. STN.		DRN BY: V.S. GUGMAN CHD BY: S.N. PAWAR A.P. GORE CEPL: SP. MAHANA	DRG. NO.: SK / PRO (2010) 11 SCALE: N.T.S. DATE: 25.02.2010	TITLE: MAP SHOWING POWER SUPPLY ARRANGEMENT FOR B.E.S.T. D:\01 DRAWING OFFICE\2 GENERAL\03 C-PRO\SK-PRO (2010) 11 (SUPPLY OF BEST)\UPTO 31.01.2023 FOR BULLETIN.dwg	PROJECT DEPARTMENT THE B.E.S.&T. UNDERTAKING 2 nd Floor, Backbay Veej Bhavan, Plot No. - 149/150, General Jagannath Bhosale Marg, Mumbai- 400 021.
--	--	--	---	--	---

UPDATED AS ON :- 31.01.2023

List of Officers in Operation & Maintenance Divisions

Name	Designation	Telephone No		Responsibility
		Mobile	Office	
Chougule N.N.	CEM	9969324485	22840942 22856262 Extn. 502	In-charge of Distribution of South & North Division
Bansode S.S.	DCE (DN)	9869407196	4102929	In-charge of overall control of HV/LV distribution of all North Zones. In charge of liaison with police control, fire brigade and MCGM authorities for necessary help
Fulpagare S.V.	DCE (DS)	9869870154	22013635	In-charge of overall control of HV/LV distribution of all South Zones. In charge of liaison with police control, fire brigade and MCGM authorities for necessary help
Operation & Maintenance South				
Vacant	DEMS		22154428 22153486	In-Charge of South Zone
Sonawane N.N.	SMS1	9869244920	22153486	HV Supply Restoration & RSS Maintenance & Manning
Qadri S.M.	SMS 3	9869451801	22153486	Static-I , Static-II & Departmental Store
Konale G. B.	AEMS 1	8369010344	22153486	110 KV RSS Maintenance & Manning & Pillar Scheme Execution Maintenance & All Vehicles,
Surti H.G.	AEMS 2	9029219435	22153486	Asset Management,, Fault Control, L.V.Supply Restoration. L.V.Load & L.V. Scheme Preparation
Adangale A.S.	AEMS 3	9503193737	22153486	Testing & Permanent Repairs

Name	Designation	Telephone No		Responsibility
Operation & Maintenance Central South				
Narkhede P.S.	DEMCS	9969878588	7208972483	In-Charge of Central South Zone
Zope R.B.	SMCS 1	8779376948	7208972489	Static-I, L.V.Loads, Scheme Preparation, MERC, Asset, LV & Planning related proposals clearances
Daberao K.R.	SMCS 2	9867164895	7208973132	L.V.Supply Restoration, Temp. Supply, M.V. Driver Section & Consolidated Temp. O/H wire MIS of all O & M
Shinde A.B.	SMCS 3	9082727482 9869454302	7208972475	Static-II
Khan A.A.M.S.	AEMCS 1	9870854415	--	H.V. Supply Restoration, System Control, Testing
Sawant A.V.	AEMCS 2	9987505779	7208972478	Repairs, Pillar Maintenance, Khetwadi Scheme Chowkey, Outsourcing
Malholi S.A.Q.	AEMCS 3	8779516383	7208972488	RSS & Khetwadi 110 kV RSS
Operation & Maintenance Central North				
Kamble M. S.	DEMCN	9757092063	24121740 24120301	In-Charge of Central North Zone
Taur S.M.	SMCN 1	9969011671	24121740 24120301	Permanent Repair, U/G Cable Testing, Scheme Execution & Pillar Maintenance
Suryavanshi S.D	SMCN 2	7506692505	24121740 24120301	RSS Maintenance & HV supply restoration, Zonal Control CentralNorth (ZCC)
Mayekar Y. N.	AEMCN 2	9702127884	24121740 24120301	DSS Maintenance (Static I & II)
Mali V. R.	AEMCN 3	9702952979	24121740 24120301 7208972445	L.V. Supply Restoration, arrangement of Temporary Supply, Scheme Preparation & Fault Control ,

Operation & Maintenance North West

Deshmukh D.S.	DEMNW	9969007861	7208940968	In-Charge of North West Zone
Vacant	SMNW 1			HV supply restoration, RSS maintenance & DBA 110 kV RSS
Wayal N.M.	SMNW 2	8097016868	7208940568	Testing Section & Over all in-charge of Supervisory Control * Additional Charge of HV Supply Restoration (Prabhadevi & Dharavi Zone)
Patil S.V.	SMNW 3	7710926167	24145888	Static I & II and Vehicle Arrangement
Vacant	SMNW 4			Overall In Charge of Dharavi Cell, Scheme preparation, LV supply restoration section, Temporary Supply, Dharavi Fault Control
Deshmukh S. R.	AEMNW 1	9082727482	7208940367	Permanent Repairs & Scheme execution. (Prabhadevi Zone)
Koyande A. R.	AEMNW 2	8779505006	8097562072	Permanent Repairs Section, Dharavi, kalakilla Chowkey, SIMHA-97 & Scheme Execution
Koturwar P. L. *Superannuated on 01/08/2023	AEMNW 3	9892053319	--	LV Load, Mains Engineer, Temp. Supply, Mahim Fault Control, Scheme preparation (Prabhadevi Zone) * (Additional charge of R&M RSS and DBA 110KV RSS)
Dixit R. A.	AEMNW 4	8087820362	--	Pillar maintenance, Maintaining Inventory & Safety Cell Committee, Dept. MIS

Operation & Maintenance North East

Gunjal P.D.	DEMNE	7710008156	8097585083	In-Charge of North East Zone
Salve M. M.	SMNE 1	9820591251	8097585073	Permanent Repairs, Testing, Monorail chowky and Outstanding recovery in respect of damaged Cables
Kamble R.K.	SMNE 2	9773326033	--	Static I, Static II, MIS, Monthly & Fortnight Statistical Data & RTI First Appellate Authority
Puranik P.A.	SMNE 3	9869548940	--	RSS, R&M, HV Supply Restoration
Vaidya S.J.	AEMNE 1	9969252777	--	Scheme Preparation and Scheme Execution (Maheshwari Chowky)
Purandare S.G.	AEMNE 2	9819148149	8097585084	LV Supply Restoration Load sheet, DG Set & Dadar Fault Control, Temp. Supply & Asset Management
Wahut B.S.	AEMNE 3	9969076142	8097585096	Pillar Maintenance & MV / EV Driver allocation including Hiring of Vehicle from outside parties

ANNEXURE IV

List of "A Grade" Officers (A-4) & (A – 5) residing in our area of Electric Supply

Sr. No.	Name	Grade	Department	Mobile No.	Resi. Location
1.	M. M. Salave	Supdt.	O&M(NE)	9820591251	Sitladevi Qtrs.
2.	M. M. Daware	Supdt.	Power Purchase	9869564612	Sitladevi Qtrs.
3.	R. B. Ghate	Suptd.	Planning (N)	9969010219	Matunga Qtrs.
4.	G. S. Bains	Suptd.	System Protection	7967440695	Cumballa Hill Qtrs.
5.	S. D. Joglekar	Supdt.	Power Management	9869035537	Love Grove Qtrs.
6.	M. K. Anwar	Supdt.	CC (E) ward	9869222159	Colaba Qtrs.
7.	D. R. Chormale	A.E.	Construction	9867998639	Sion Qtrs.
8.	A.B. Shinde	A.E.	CC (F/S) ward	9869454302	Matunga Qtrs.
9.	B. S. Kamble	A.E.	CC(B) ward	9869034874	Cumballa Hill Qtrs.
10.	H. N. Sawant	A.E.	System Protection	9869112360	Jacob Circle
11.	S. S. Patil	A.E.	AGM's Office	9869100531	Worli
12.	D. J. Bansode	A.E.	CC (E) ward	9967913869	Cumballa Hill Qtrs.
13.	S. K. Jambhale	A.E.	Vigilance (S)	9869011003	Sion Qtrs.
14.	A. T. Kambli	A.E.	System Protection	8104471305	Parel qtrs.
15.	P. C. Rane	A.E.	CC (E) ward	8356855849	Sitladevi Qtrs.
16.	P. L. Koturwar	A.E.	O&M(CN)	9892053319	Sion Qtrs.
17.	D. D. Wagh	A.E.	DECSL'S Office	9869085188	Shivaji Park Qtrs.
18.	S. R. Deshmukh	A.E.	CC(C) ward (on loan to CC(D)ward)	9987096135	Cumballa Hill Qtrs.
19.	S. M. Choudhari	A.E.	Street Lighting (C)	9869486342	Matunga Qtrs.

ANNEXURE V

LIST OF ESSENTIAL FEEDERS IN SOUTH ZONE

<u>APPOLLO RSS</u>				
Sr. No.	Essential Consumers	Name of DSS	11KV Feeder	Tr. No.
1.	Electric House	Electric House, Colaba Air Compressor	A-1.4	1
2.	Police Head Quarters	Chhatrapati Shivaji Marg	A-2.4	2
3.	Indian Navy	INS Angre	A-2.5	2
4.	Apollo RSS	Apollo Static	A-4.3	4
5.	Janmabhoomi Press	Janmabhoomi	A-2.7	2
6.	Mumbai Stock Exchange	New Stock Exchange	A-1.5, 2.1. 3.1	1, 2, 3
7.	Colaba Tel. Exchange	Strand Cinema	A3.2	
<u>G.T. HOSPITAL RSS</u>				
Sr. No.	Essential Consumers	Name of DSS	11KV Feeder	Tr. No.
1.	Times of India	Times/Times of India	GT-1.2	1
2.	Police Commissioner's Office	Commissioner Office	GT-2.4, 1.7	1 & 2
3.	Bombay Hospital	B'bay Hospital Annex.	GT-2.3	2
4.	G.T. Hospital / Cama Hospital	G.T. Hospital	GT-2.1	2
5.	Bombay Hospital Medical Research Center	Medical Research Centre	GT-2.5 GT 1.6	1,2
<u>NARIMAN POINT RSS</u>				
Sr. No.	Essential Consumers	Name of DSS	11KV Feeder	Tr. No.
1.	Free Press	Free Press	NP-2.1	2
2.	Sachivalaya	Sachivalaya Annex.	NP-2.2	2
3.	Indian Express	Indian Express	NP 2.3 / 3.3	1, 2
4.	Vidhan Bhavan	New Council Hall	NP-2.7	2
5.	Vidhan Bhavan Stand By Supply	Union Bank	NP-4.1	2
6.	Mantralaya	Mantralaya New	NP-3.6/ NP-2.2	1,2
7.	Aakashwani	A.I.R. Studio	NP-3.3	1
8.	Oberoi Hotel	Oberoi Sheraton / Oberoi Ann.	NP-4.7, NP-1.8, NP-3.5	2,1,1
<u>COLABA RSS</u>				
Sr. No.	Essential Consumers	Name of DSS	11KV Feeder	Tr. No.
1.	Indian Navy	INS Kunjali	C-1.6	1
2.	Piem Hotel	Piem Hotel	C 2.5	2
3.	BEST Computer Centre/ Geeta Nagar Pumping	Backbay Depot/ Geeta Nagar Pumping	C-1.1	1
4.	Colaba sewage	Colaba sewage	C3.2	3

HUTATMA CHOWK RSS

Sr. No.	Essential Consumers	Name of DSS	11KV Feeder	Tr. No.
1.	Telegraphic Office	C.T.O.	HC-1.2, 3.3	1&3
2.	ENT Hospital	ENT Hospital	HC 1.4	1
3.	City Tel. Exch.	Telephone	HC-2.3	2
4.	VSNL	OCS	HC 3.2	3
5.	High Court	High Court	HC-1.3, 3.3	1&3

BALLARD RSS

Sr. No.	Essential Consumers	Name of DSS	11KV Feeder	Tr. No.
1.	Indian Navy	Ballard Docks	BE-1.4,2.2,3.2	1, 2, 3
2.	Mint	Mint	BE-2.1 / 1.2	1, 2
3.	St. George Hosp. + G.P.O	St. George	BE-3.4	3
4.	New Reserve Bank	New RBI, New Mint	BE 3.6, 1.1	3, 1
5.	BEST VHF Supply / RBI	New Mint	BE-1.1	1

MARINE DRIVE RSS

Sr. No.	Essential Consumers	Name of DSS	11KV Feeder	Tr. No.
1.	BMC Churchgate Pumping	Churchgate Sew-Ppg.	MD-1.7	1
2.	Telecom	Telecom	MD-2.4	2
3.	Air-India	Air-India	MD-3.1	3
4.	M.D. RSS	CCI	MD-3.2	3
5.	Vidhan Bhavan	New Council Hall	MD-1.1	1/2

NAVAL DOCKYARD RSS

Sr. No.	Essential Consumers	Name of DSS	11KV Feeder	Tr. No.
1.	Naval Dock Yard RSS	All Feeders to Naval Dock	All Fdr.	All

NAVY NAGAR RSS

Sr. No.	Essential Consumers	Name of DSS	11KV Feeder	Tr. No.
1.	Colaba sewage	Colaba sewage	NN 1.1	1
2.	Army & Navy	MES No.1	NN 1.2	1
3.	TIFR	TIFR & TIFR Old	NN 1.4, 2.5	1, 2
4.	Colaba Purification Colaba Observatory Robert Road Pumping, Ashwini Hospital	Colaba Purification, Colaba Observatory, Robert Road Pumping, Ashwini Hospital	NN 1.7	1
5.	BEST Computer Centre/ Geeta Nagar Pumping	Backbay Depot/ Geeta Nagar Pumping.	NN-1.5	1

BACKBAY RSS

Sr. No.	Essential Consumers	Name of DSS	11KV Feeder	Tr. No.
1.	Cooperage Exchange	Cooperage Exchange	BB 4.7	2
2.	BMC Pumping	Cooperage Pumping	BB 2.3	1
3.	Cuffe Parade Tel. Exchange	Somani School East	BB 2.5	1
4.	State Control	Cooperage Rd.	BB 2.6	1
5.	MERC	Commerce Centre	BB 2.5,3.6	1,2
6.	Sachivalaya Annexe	Sachivalaya Annexe	BB 1.5	2
7.	Mantralaya	Mantralaya New	BB 1.5	1
8.	PIEM Hotel	PIEM Hotel	BB3.5	2

ESPLANADE RSS

Sr. No.	Essential Consumers	Name of DSS	11KV Feeder	Tr. No.
1.	BMC Pumping & Disaster Management MCGM	Corporation	E 4.3	2

LIST OF ESSENTIAL FEEDERS IN CENTRAL SOUTH ZONE**MALBAR HILL RSS**

Sr. No.	Essential Consumers	Name of DSS	11KV Feeder	Tr. No.
1.	Varsha Bungalow (CM Resident)	Mount Pleasant (E)	MH 1.1	1
2.	Sahyadri Guest House	Sahyadri Guest House	MH 1.1	1
3.	Malbar Hill R.S.S.	New Siri Road	MH 2.7	2
4.	Malbar Hill Booster Pumping	Malbar Hill Booster	MH 3.5	3
5.	Antilia	Antilia	MH 3.5	3

NEPEANSEA RSS

Sr. No.	Essential Consumers	Name of DSS	11KV Feeder	Tr. No.
1.	Governor of Maharashtra	Raj Bhavan	NS 2.1	2
2.	Raj Bhavan Premises	Walkeshwar (S)	NS 1.1	1
3.	Malbar Hill Reservoir	Malbar Hill Reservoir	NS 2.4	2
4.	Malbar Hill Pump	Malbar Hill Pumping	NS 2.4	2
5.	Nepeansea Rd. RSS	Godrej Baug	NS 1.4	1
6.	Varsha Bungalow (CM Resident)	Mount Pleasant & Everest Apartment	NS 3.2	2

GRANT ROAD RSS

Sr. No.	Essential Consumers	Name of DSS	11KV Feeder	Tr. No.
1.	Grant Road R.S.S.	Grant Road Static	GR 3.1	3
2.	Khetwadi R.S.S.	Grant Road Static	GR 3.1	3
3.	Harkisondas Hospital	Harkisondas Hospital	GR 1.6	1
4.	Saifee Hospital	Saifee Hospital	GR 1.1	1
5.	J. J. Hospital	Baboola	GR 4.6	4
6.	J. J. Hospital	J. J. Hospital	GR 4.6	4
7.	Durgadevi Reservoir	Durgadevi Reservoir	GR 2.4	2

CUMBALA HILLS RSS

Sr. No.	Essential Consumers	Name of DSS	11KV Feeder	Tr. No.
1.	Breach Candy	New Breach Candy	CH 1.5	1
2.	Breach Candy	New Breach Candy	CH 3.6	3
3.	Jaslok	Jaslok	CH 3.3	3
4.	Cumbala Hill R.S.S.	Olympus	CH 1.3	1
5.	Antilia	Antilia	CH 3.2	3

ESPLANADE RSS

Sr. No.	Essential Consumers	Name of DSS	11KV Feeder	Tr. No.
1.	System Control R.S.S.	Vidyut	E 2.1	2
2.	Esplanade R.S.S.	Vidyut	E 2.1	2

GIRGAON RSS

Sr. No.	Essential Consumers	Name of DSS	11KV Feeder	Tr. No.
1.	Girgaon R.S.S.	Girgaon (W)	GM 2.7	2

MUMBADEVI RSS

1.	Mumbadevi R.S.S.	Mumbadevi Tank	MU 3.3	3
2.	Kalbadevi Telephone Exchange	Kalbadevi Telephone Exchange	MU 3.3	3

MASJID RSS

Sr. No.	Essential Consumers	Name of DSS	11KV Feeder	Tr. No.
1.	Masjid R.S.S.	Khadak Street	MS 1.2	1
2.	Shayda Marg MCGM Pumping	Shayda Marg	MS 2.6	2

J. J. HOSPITAL RSS

Sr. No.	Essential Consumers	Name of DSS	11KV Feeder	Tr. No.
1.	J. J. Hospital	J. J. Hospital North	JJ 1.4	1

NIMKAR MARG RSS

Sr. No.	Essential Consumers	Name of DSS	11KV Feeder	Tr. No.
1.	Harkisandas Hospital	H. N. Hospital	NM 1.5	1
2.	Harkisandas Hospital	H. N. Hospital	NM 2.5	2
3.	Nimkar Marg RSS	Tardeo Depot	NM 1.1	1

MAZGAON SHIP YARD RSS

Sr. No.	Essential Consumers	Name of DSS	11KV Feeder	Tr. No.
1.	Mazgaon Shipyard RSS	BSN	MSY 1.5	1

LIST OF ESSENTIAL FEEDERS IN CENTRAL NORTH ZONE**KUSSARA RSS**

Sr. No.	Essential Consumers	Name of DSS	11KV Feeder	Tr. No.
1.	Kussara RSS	Kussara STATIC	K 2.3.	2

KEM HOSPITAL RSS

Sr. No.	Essential Consumers	Name of DSS	11KV Feeder	Tr. No.
1.	Wadia Hospital	Wadia Hospital	KEM 1.1/2.2	1
2.	Tata Hospital,	New Tata Memorial	KEM 1.1	1
3.	Haffkin Institute	New Haffkin	KEM 1.4	1
4.	Tata Hospital	Jubli Block	KEM 2.1	2
5.	KEM Hospital & KEM RSS	KEM No.2	KEM 2.5	2

SEWREE RSS

Sr. No.	Essential Consumers	Name of DSS	11KV Feeder	Tr. No.
1.	Sewree RSS	King Edward	SW 1.4	1
2.	KEM Hospital	KEM X Ray, Cardiac	SW 1.6	1
3.	T.B. Hospital	Hospital	SW 2.3	2
4.	Tata Cancer Hospital	Tata Memorial Annex.	SW 3.3	3

SWAN MILL RSS

Sr. No.	Essential Consumers	Name of DSS	11KV Feeder	Tr. No.
1.	Omnitalk wireless repeater Tower	TATA Housing	SN 1.1	1
2.	Swan Mill RSS	Swan Mill Static	SN 1.6	1

MORARJI MILL RSS

Sr. No.	Essential Consumers	Name of DSS	11KV Feeder	Tr. No.
1.	Morarji RSS	Morarji Mills RSS Supply	Morarji Mill RSS LVB	1

MAZGAON DOCK RSS

Sr. No.	Essential Consumers	Name of DSS	11KV Feeder	Tr. No.
1.	Prince Ali Khan Hosp.	Ismalia Hosp.	MZ 1.3	1
2.	Mazgaon Tel. Exchange	Mazgaon Tel. Exchange	MZ 1.4.	1
3.	Mazgaon Dock	South Yard	MZ 1.5.	1
4.	Bhandarwada Pumping	Bhandarwada Pumping	MZ 2.1.	2
5.	Mazgaon Dock RSS	Mazgaon Dock Qtrs.	MZ 2.2	2
6.	Naval store depot	Ordinance depot	MZ 2.6	2

BOMBAY CENTRAL RSS

Sr. No.	Essential Consumers	Name of DSS	11KV Feeder	Tr. No.
1.	Bombay Central RSS	Potia Estate	BCT 2.2	2
2.	S.T. Depot	State Transport	BCT 3.6	3
3.	Jagjivanram Hospital	Jagjivanram	BCT 1.4	1
4.	Byculla Fire Brigade	Souter Street	BCT 1.5	1

BYCULLA RSS

Sr. No.	Essential Consumers	Name of DSS	11KV Feeder	Tr. No.
1.	Byculla RSS	Connaught West	BY 2.2	2
2.	Boundary Rd. Pumping Stn.	Boundary Rd.	BY 2.3	2
3.	Masina Hospital	Masina Hospital	BY 3.6	3

PAREL RSS

Sr. No.	Essential Consumers	Name of DSS	11KV Feeder	Tr. No.
1.	MTNL Curry Rd.	MTNL Curry Rd.	P 1.4	1
2.	Chinchpokli Pumping Stn.	Chinchpokli Pumping	P 1.5	1
3.	M.G. Hospital & Parel Tank Pumping Stn.	M.G. Hospital	P 2.1	2
4.	Parel RSS	Wadia Co-Op.	P 3.3	3
5.	KEM Hospital & KEM RSS	KEM No.2	P 3.5	3

NAIR HOSPITAL RSS

Sr. No.	Essential Consumers	Name of DSS	11KV Feeder	Tr. No.
1.	Nair OPD	Nair OPD	NH 1.1	1
2.	Nair Hospital RSS	Nair Hospital Static	NH 1.2	1
3.	Nair Hospital	Nair Hospital	NH 1.4	1
4.	Byculla Tel. Exchange	Byculla Tel. Exchange	NH 2.1	2

MAHALAXMI RSS

Sr. No.	Essential Consumers	Name of DSS	11KV Feeder	Tr. No.
1.	Kasturba Hospital	Sane Guruji Marg	ML 1.5.	1
2.	Dr. B. A. 110 KV RSS	SBM Static	ML 1.1	1
3.	MCGM'S Wyle Rd. Ppg Stn. & Civil Defence	Jacob Circle	ML 2.3	1

LALBAUG RSS

Sr. No.	Essential Consumers	Name of DSS	11KV Feeder	Tr. No.
1.	Lalbaug RSS	Lalbaug Static	LB 1.3	1

APOLLO MILL RSS

Sr. No.	Essential Consumers	Name of DSS	11KV Feeder	Tr. No.
1.	Apollo Mill RSS	Lodha Premerio Annx	AM 1.2	1

SIMPLEX MILL RSS

Sr. No.	Essential Consumers	Name of DSS	11KV Feeder	Tr. No.
1.	Simplex Mill RSS	Planet Godrej	SX 2.2	2
2.	Jacob Circle Pumping Stn, Mahalaxmi RSS	New Circle	SX 1.4	2

LIST OF ESSENTIAL FEEDERS IN NORTH EAST ZONE**SIMPLEX MILL RSS**

Sr. No.	Essential Consumers	Name of DSS	11KV Feeder	Tr. No.
1.	Supervisory Control	Bus Garage	KG 1.2	1
2.	Kingsway R.S.S.	Kingsway Static	KG 3.7	3
3.	Traffic Control	Wadala Depot	KG 1.5	1
4.	Matunga Air Compressor (HV)	Matunga Air Compressor (HV)	KG 2.1	2
5.	Wadala Pumping (HV)	Wadala Pumping (HV)	KG 3.2	3
6.	Hindustan Petroleum	Hindustan Petroleum	KG 2.4	2
7.	Wadala Tel. Exchange (HV)	Wadala Tel. Exchange (HV)	KG 3.5	3

SION FORT RSS

Sr. No.	Essential Consumers	Name of DSS	11KV Feeder	Tr. No.
1.	Sion Tel. Exch. (HV)	Sion Tel. Exch. (HV)	SF 1.2	1
2.	Tilak Hospital	Tilak Hospital	SF 1.3	1
3.	Lion Centre	Lion Centre	SF 1.5	1
4.	Sion Fort R.S.S. & Lion Centre	Sion Fort	SF 1.5	1
5.	Sion Hospital	Sion Hospital	SF 1.5	1
6.	Koliwada Pumping, Sion PPS	Koliwada Pumping.	SF 2.1	2
7.	Somaiya Ayurvihar (Hosp.)	Somaiya Trust	SF 2.3	2
8.	Chunabhathi BMC pumping	Duncan causeway (HV)	SF 2.6	2
9.	Duncan Sewage Ppg. (MCGM)	Duncan Sewage Pumping	SF 2.5	1
10.	Air Force Qtrs.	Air Force Qtrs. (HV)	SF 1.7	1

WADALA RSS

Sr. No.	Essential Consumers	Name of DSS	11KV Feeder	Tr. No.
1.	Salt Pan Pumping	Salt Pan Pumping	WD 1.1	1
2.	Kikabai Hospital Trust	Kikabai Hospital Trust (HV)	WD 1.3	1
3.	IPR Office	IPR Office	WD 2.3	1

RAOLI HILL RSS

Sr. No.	Essential Consumers	Name of DSS	11KV Feeder	Tr. No.
1.	Raoli Hill PPG	Raoli Hill PPG	RH 2.3	2
2.	Anik CNG Plant,	Anik No. 1	RH 1.4	1
3.	Mahanagar gas	Mahanagar gas	RH 1.4	1

LODHA CROWN RSS

Sr. No.	Essential Consumers	Name of DSS	11KV Feeder	Tr. No.
1.	Lodha Crown RSS	-----	-----	1

DHARAVI RSS

Sr. No.	Essential Consumers	Name of DSS	11KV Feeder	Tr. No.
1.	Sion Hospital	Sion Medical	DH 1.3	1
2.	Kikabai Hospital/ Sion Hospital	Kikabai Hospital / Sion Hospital	DH 2.5	2
3.	Dharavi R.S.S.	Shalimar Ind. Est.	DH 3.4	3

MAHIM C'WAY RSS

Sr. No.	Essential Consumers	Name of DSS	11KV Feeder	Tr. No.
1.	Mahim C'Way R.S.S. & New Diabatic Association.	Mahim C'Way Static	MC 4.4	4

SITALADEVI RSS

Sr. No.	Essential Consumers	Name of DSS	11KV Feeder	Tr. No.
1.	Sena Bhavan & Shushrusha Hosp.	Anand Van	ST 2.3	2
2.	Mahim Village Hospital	Mahim Village Hospital	ST 3.2	3
3.	Hinduja Hospital	National Hospital Annex. (HV)	ST 3.3	3
4.	New Tulasi & BPL Centre (HV)	Mahim PPG /HV	ST 4.2	4
5.	Mayors Bungalow & Sitaladevi RSS	Cadell Rd.	ST 4.4	4
6.	Hinduja Hospital	National Hospital	ST 4.7	4
7.	New Dadar Purification (HV)	New Dadar Purification. (HV)	ST 2.5	2
8.	Shivaji Park Tel. Exch.	Shivaji park Tel. Exch.	ST 2.7	2

LIST OF ESSENTIAL FEEDERS IN NORTH WEST ZONE**MAHIM RSS**

Sr. No.	Essential Consumers	Name of DSS	11KV Feeder	Tr. No.
1.	Prabhadevi Tel. Exch. (HV) & GMT Block (HV)	Prabhadevi Tel. Exch. (HV) & GMT Block	MM2.1	2
2.	VSNL(HV)	VSNL Static	MM1.1	1
3.	Mahim RSS	Mahim Static	MM2.6	2
4.	Diagnostic Centre	Diagnostic Centre	MM2.7	2

WORLI RSS

Sr. No.	Essential Consumers	Name of DSS	11KV Feeder	Tr. No.
1.	Worli RSS	Raheja Atlantis	W1.4	1
2.	MCGM Control	MCGM Data Centre	W2.4	2
3.	MCGM's TP Rd PPG Stn.	New Fergusson Air Compressor	W3.3	3

PRABHADEVI RSS

Sr. No.	Essential Consumers	Name of DSS	11KV Feeder	Tr. No.
1.	Prabhadevi Tel. Exchange	Prabhadevi Tel. Exchange	PR1.1	1
2.	Prabhadevi RSS	A. B. Road(N)	PR3.3	3
3.	Doordarshan	Doordarshan	PR3.5	3

NESTLE RSS

Sr. No.	Essential Consumers	Name of DSS	11KV Feeder	Tr. No.
1.	Nestle RSS	Nestle	NST 1.1,2.7	1,2
2.	Peninsula Park	Peninsula Park	NST2.2	2

<u>STANDARD MILL RSS</u>				
Sr. No.	Essential Consumers	Name of DSS	11KV Feeder	Tr. No.
1.	Cynergy IT Park	Cynergy IT Park	SM1.1,1.2	1
2.	Standard Mill RSS	Standard Mill Static	SM1.6	1
<u>POCHKHANWALA RSS</u>				
Sr. No.	Essential Consumers	Name of DSS	11KV Feeder	Tr. No.
1	Traffic Police Qtr.	Traffic Police Qtr.	PK1.5	1
2	Naval Coast Guard	Coast Guard Creek	PK1.6	1
<u>V.S.N.L. RSS</u>				
Sr. No.	Essential Consumers	Name of DSS	11KV Feeder	Tr. No.
1	VSNL	VSNL Static	V1.2	1
<u>ELPHISTON MILL RSS</u>				
1	Jupiter Mill	Jupiter Mill	EL1.6	1
2	India Bulls	Elphinston Mill RSS	EL1.3&1.7	1
3	ESIC Hospital	ESIC Hospital	EL1.5	1
<u>P.M.G.P. RSS</u>				
Sr. No.	Essential Consumers	Name of DSS	11KV Feeder	Tr. No.
1.	Dharavi Depot	Dharavi Depot	PM3.1	3
2.	ONGC Complex (HV)	ONGC	PM1.2	1
3.	Dharavi Purif. (HV)	Dharavi Purif. (HV)	PM2.1	2
<u>WORLI DAIRY RSS</u>				
Sr. No.	Essential Consumers	Name of DSS	11KV Feeder	Tr. No.
1	Doordarshan Kendra	Doordarshan	WRD1.1	1
2	Worli Tel. Exchange	Worli Tel. Exchange	WRD1.2	1
3	Worli Dairy RSS	Rishikesh	WRD2.2	2
4	Naval Coast Guard	Coast Guard Creek	WRD2.1	2
5	MCGM	Engineering Hub	WRD2.4	2
6.	Worli pumping (HV)	Worli pumping	WRD 1.2	1
<u>LOVEGROVE RSS</u>				
Sr. No.	Essential Consumers	Name of DSS	11KV Feeder	Tr. No.
1	MCGM's L.G. PPG Stn.	Love Grove RSS	LG 1.8/2.7/4.2	1,2,4
2	Love Grove RSS	Discovery Of India	LG3.5	3
3	Atria Mall	Sainath co-op	LG3.6	3
4	Nehru Science Centre	Science Centre	LG3.3	3

**BOOKING OF 'A' GRADE OFFICERS AT VARIOUS RECEIVING STATIONS
DURING EMERGENCY / DISASTER OF LARGE MAGNITUDE**

<u>ZONE</u>	Sr. No.	NAME OF RSS	PROPOSED BOOKING	
			<u>20.00 HRS TO 08.00 HRS</u>	<u>08.00 HRS TO 20.00 HRS</u>
SOUTH	1.	Apollo	V.U. Kurade	J.P. Dhodi
	2.	Backbay 110 KV	S. M .Qadri	S.R. Deskhmukh
	3.	Ballard Estate	P.N. Chaudhary	S. V. Patil
	4.	Colaba	S. D. Suryawanshi	P.R. Sonawane
	5.	G.T. Hospital	P.A. Prabhu	P. R. Patil
	6.	Hutatma Chowk	N.N. Thale	S.A. Kulkarni
	7.	Marine Drive	D.G. Patil	U.H. Gosavi
	8.	Nariman Point	D.R. Ingle	V. S. Chavan
	9.	Naval Dock	---	---
	10.	Navy Nagar	M.H. Kamble	S. D. Kulkarni
CENTRAL SOUTH	11.	Cumballa Hill	S. N. Virkar	S. D. Joglekar
	12.	Esplanade	S.M. Sonawane	P. P .Kulkarni
	13.	Girgaum	S.D. Lokhande	S. M .Virkar
	14.	Grant Rd	K.A. Dadmal	S. R. Shinde
	15.	J.J. Hospital	S. J. Vaidya	J.L. Pawar
	16.	Khetwadi	N.A. Bhosale	D. R. Jamghare
	17.	Malbar Hill	S.N. Jagtap	R.S. Kadam
	18.	Masjid	S. D. Bele	H. N. Sawant
	19.	Mumbadevi	J. A. Mulla	N.N. Sonawane
	20.	Nimkar Marg	V. R. Mali	R.G. Kalvikatte
	21.	Mazgaon Ship Yard	----	----
CENTRAL NORTH	22.	B. Ambedkar 110 KV	G. U. Phene	V.S. Gujar
	23.	Byculla	L.S. Patil	S.G. Surti
	24.	Kussara	G.N. Jadhav	S. M. Taur
	25.	Lalbaug	M.H. Waghmare	S.K. Jambhale
	26.	Love Grove	S.S. Kulkarni	S.S. Patil
	27.	Mahalaxmi	Y.S. Giri	A.R. Koyande
	28.	Mazgaon Dock	----	----
	29.	Mumbai Central	S.G. Kamdar	Y. N .Mayekar
	30.	Nair Hospital	N. S. Kunde	T. M. More
	31.	Parel	S.V. Shaha	B.B. Raikar
	32.	Tardeo	V.G. Nagvekar	L. B. Nagavekar
	33.	Worli Dairy	R. B. Ghate	Y. V .Kapadia
	34.	Futurex	-----	----
	35.	Jalan Mill	----	-----
	36.	Apollo Mill	S.D. Kamble	J.M. Lande
	37.	Simplex Mill	P. B .Gadankush	A.T. Kambli
	38.	Avighana	---	-----

**BOOKING OF 'A' GRADE OFFICERS AT VARIOUS RECEIVING STATIONS
DURING EMERGENCIES / DISASTER OF LARGE MAGNITUDE**

<u>ZONE</u>	Sr. No.	NAME OF RSS	PROPOSED BOOKING	
			<u>20.00 HRS TO 08.00 HRS</u>	<u>08.00 HRS TO 20.00 HRS</u>
NORTH EAST & NORTH WEST	39.	Dharavi	N. B. Nikam	Y. R. Agnihotri
	40.	Mahim	M.M. Davre	N.M. Wayal
	41.	Mahim Causeway	S.Y. Jagtap	B.S. Wahut
	42.	Nestle	J. T. Patil	K. A. Loke
	43.	PMGP	V.S. Gugnani	D.A. Mehta
	44.	Prabhadevi	D.S. Kadam	S. S. Kuril
	45.	Elphinston Mill	P.A. Puranik	P. V. Gholap
	46.	Sitaladevi	M. M. Salve	V.R. Bhise
	47.	Standard Mill	S.P. Dhake	R.M. Prabhu
	48.	Worli	M.D. Karanjkar	R.R. Bandal
	49.	VSNL	-----	----
	50.	Peninsula Land	-----	----
	51.	Pochkanwala Road	P. N. Harne	S.V. Shelke
	52.	K'way	D.N. Desai	K.R. Daberao
	53.	KEM Hospital	M.R. Masurkar	G. P. Choudhary
	54.	Raoli Hill	S.P. Dhake	V. N .Kulkarni
	55.	Sewree	S. R .Sonde	A.S. Adangale
	56.	Sion Fort	S.G. Purandare	V.S. Khole
	57.	Swan Mill	R.K. Kamble	M. N. Rathod
	58.	Wadala	B.R. Bhole	C.S. Bramhane
59.	Lodha Crown	A. S. Samant	A. V. Sawant	
60.	Pratiksha Nagar	P.P. Kulkarni	A. G. Khandare	

ANNEXURE VII

Electric Supply – Names, Address & Telephone Nos. of Senior Officers

Sr. No	Name	Designation	Office		Residence		Functional Responsibilities
			Location	Telephone Nos.	Location	Telephone Nos.	
1.	Lokesh Chandra	GM	Colaba	22799313			Entire over all in-charge of Electric Supply & Transport
				22856262			
Email ID : gm@bestunderetaking.com							
2.	Vacant	DGM (ES)	Colaba	22830284			Entire over all in-charge of Electric Supply
				22831950			
Email ID : dgmes@bestunderetaking.com							
3.	Shaikh B.A.W.	AGM (ES)	Colaba	22831950	B/4, Morland Rd. Officers Qtrs. Near Mumbai Central Bus depot, Mumbai 400 008	9967915094	Over all in-charge of Electric Supply
				22799510			
Email ID : agmes@bestunderetaking.com							
4.	Chandankar G.G.	CECC	Colaba	22799563	B/15, BEST Off. Qtrs. Altamount Rd., Cumbal a Hill, Mum-26	9757435560	Over all In-charge of Customer Care Dept., Meters, IT & CGRF Dept.
				Extn.566			
Email ID : cecc@bestunderetaking.com							
5.	Makwana S.P.	CEPL	Colaba	22799581	906, Neelkant Enclav. LBS Marg, Opp. Shreyas Cinema, Ghatkopar (W)Mum-86	25001157	Project, Planning, Network, Planning Material, procurement of Street Lighting SCADA System
				22799583			
Email ID : cepl@bestunderetaking.com							
6.	Dr. Patsute R.D.	CER	Colaba	22040081	Flat No.112 BEST Multistory Building 11 th Floor, 142 Colaba M-01	9869405910	Over all In-charge of Regulatory Cell
				22856262			
Email ID : cer@bestunderetaking.com							
7.	Chougule N.N.	CEM	Colaba	22840942	Bldg.E2, Flat No.11, Gitanjali CHS, Sector 46, Nerul(W), Navi Mumbai 400706	27718375	Overall In-charge of O & M Dept., all executing dept. i.e. Erection North, South & Construction
				22856262			
Email ID : cem@bestunderetaking.com							

8.	Pawar D.N.	DCE (W)	Kussara	8097584818 8097584820	C/703, M-2, CHS Pratiksha Nagar, Sion, Mumbai 400 022	9870383684	Over all In-charge of works dept. i.e. executing departments Erections & Construction
Email ID : dcew@bestunderetaking.com							
9.	Fulpagare S.V.	DCE (DS)	Phatakwadi	22013635	BEST off. Qtrs. Potia Land Mumbai Central Mumbai 400008	9869870154	Overall In-charge of Operation and Maint. (South / Central South) Departments
Email ID : dceds@bestunderetaking.com							
10.	Bansode S.S.	DCE (DN)	Wadala	24102929	25/C/702, New Dindoshi Greenfield CHS, Mhada, Goregaon (E), Mumbai065	9869407196	Overall In-charge of all Operation and Maintenance of North Dept.
Email ID : dcedn@bestunderetaking.com							
11.	Chandankar G.G.	DCECC(S)	Colaba	22841675	B/15,BEST Off. Qtrs. Altamount Rd.,Cumbal a Hill,Mum- 26	9757435560	Over all In-charge of Customer Care A, B, C, D, Meters & HVC Dept.
Email ID : dceccs@bestunderetaking.com							
12.	Talegaonkar A.R.	DCECC (N)	Wadala	24101532	3/14, BES Officer Qtrs. Plot :56, Gorai- 2, Borivali (W), Mumbai 400 091.	9819065801	Overall in- charge of Customer Care E, FS, FN, GN, GS, SIMHA
Email ID : dceccn@bestunderetaking.com							
13.	Chavan S.R.	DCE (SL)	Sewree	24116023	6/1 st floor, BEST Kingsway Off. Qtrs, Parsi Coloney, Dadar-W, Mum-14	9819908070	Over All In-charge of Street Lighting, Maintenance, Construction & Telecommunication & Electronics Department
Email ID : dcesl@bestunderetaking.com							
14.	Bhinge S.N.	DCEP / DCER	Colaba	22811257 22853483	B-3/302/ Shree Rajlaxmi Park, Kharegaon, Kalwa, Thane400 605	25397140 9869475911	Over all In-charge of Power Management & Procurement of Renewable Energy and Regulatory Cell
Email id : dcemerc@bestundertaking.com							

15.	Samuel N.N.	DCE (Review)	Colaba	22828891 22799732	Shivlal Motilal Bldg. 2nd flr. Jehangir Boman Behram Marg, Mumbai Central 400 008	9833088957	In charge of Review Committee
Email id : dcerc1@bestundertaking.com							
16.	Mukane S.B.	DECO	Sewree	24165188 24162879 7208940825	BEST off. Qtrs.12/B, Flat No.8, Mhada Colony, Andheri (E), Mumbai 93	9821489183	In-charge of Construction Dept.
Email id : deco@bestundertaking.com							
17.	Bamble M.B.	DEEN	Kussara	23719755 7208973138	B-15, Happy Home Society, Jaideep Nagar, Nahur (E), Mumbai 400042	9769984929	In-Charge of Erection North Dept.
Email id : deen@bestundertaking.com							
18.	Sayani M.R.A.	DEES	Kussara	23719763 7208972472	Flat no.11, 6 th flr., BEST Potio officers Qtrs. Mumbai Central Bus Depot, Bellasis Rd., Mum 008	9967278634	In-Charge of Erection South Dept.
Email id : dees@bestundertaking.com							
19.	Gunjal P.D.	DEMNE	Anik	24012951 8097585083	3rd flr, BEST Officers Qtrs, 125, M.B. Raut Rd, Shivaji Park, Dadar Mumbai -28	7710008156	In-Charge of Operation & Maintenances North East Dept.
Email id : demne@bestundertaking.com							
20.	Deshmukh D.S.	DEMNW	Prabhadevi	7208940968	OQ/A-1, Flat no.15, BEST Off. Qtrs. A.D. Ubhare Marg, Ghatkopar (W), Mumbai 75	9969007861	In-Charge of Operation & Maintenances North West Dept.
Email id : demnw@bestundertaking.com							
21.	Kamble M.S.	DEMCN	Wadala	24120301	Q1306 Shrusti Heights Opp. Asian Paints L B S Marg Kurla Mum 78	9757092063	In-Charge of Operation & Maintenances Central North Dept
Email id : demcn@bestundertaking.com							

22.	Narkhede P.S.	DEMCS	Phatakwadi	22073875 2080524 Ext. 741	BEST Officer Quarters , B2/25, Devi Dayal Road Mulund West, Mum-80	7506000722	In-Charge of Operation & Maintenances Central South Dept.
Email id : demcs@bestundertaking.com							
23.	Vacant	DEMS	Colaba Off Shore Bldg.	22154428			In-Charge of Operation & Maintenances South Dept.
Email id : dems@bestundertaking.com							
24.	Pawar S.N.	DECC A WARD	Colaba	22856262 Extn. 511	A-404, Pratibha Sankalp CHS, Plot no.19, Nagari Niwara Parishad, Goregaon East, Mum- 97	9987014661	In-Charge of Customer Care A Ward
Email id : deccaward@bestundertaking.com							
25.	Deshmukh R.J.	DECC B WARD	Colaba	22856262 Extn. 541	A/102, Regency Garden, Murbad Road, Purnima Talkies, Kalyan (W), 421301	9987042071	In-Charge of Customer Care B Ward
Email id : deccbward@bestundertaking.com							
26.	Kharote M.A.	DECC C Ward	Phatakwadi	22011814 097584862	1/C, 43, Kalpataru Hills,Chitalsa r,Manpada, Thane (W), 400 610	9082080499	In-Charge of Customer Care C Ward
Email id : decccward@bestundertaking.com							
27.	Inchnalkar S.N.	DECC D Ward	Tardeo	7208836092	Best Off. Qtrs Flat No.8,Vittal Chavan Marg,Parel East, Mum12	9869754601	In-Charge of Customer Care D Ward
Email id : deccdward@bestundertaking.com							
28.	Karekar U. J.	DECC E Ward	Mumbai Central	7208836177	C/308, Bdg no.8, Rajkamal CHSL, Tilak Nagar, Mumbai 89	8369941475	In-Charge of Customer Care E Ward
Email id : decceward@bestundertaking.com							
29.	Tiwari A.R.	DECC F / North Ward	Wadala	24181324 24190680 Extn . 680	505, Radha Krishana Apt, 5 th floor, C- block, Ulhasnagar-3,	8668988051	In-Charge of Customer Care F / North Ward
Email id : deccfnward@bestundertaking.com							

30.	Mairh S. S.	DECC F / South Ward	Wadala	24104282 24190747 Extn. 747	1 A, 604, Laxmi CHSL, Devrata nagar, Nr. Chunabhatti Police Stn. Chunabhatti (E) Mum 022	9892687236	In-Charge of Customer Care F / South Ward
				Email id : deccfsward@bestundertaking.com			
31.	Gawade S. S.	DECC G / North Ward	Dadar	24141389 24194555 24146262 Extn. 555	A/504, Rajsatyam, Shiv valab Rd., Ashok Van Dahirsar E), Mumbai 068	24308661 9769626846	In-Charge of Customer Care G / North Ward
				Email id : deccgnward@bestundertaking.com			
32.	Sawant P. W.	DECC G / South Ward	Dadar	24120557 24190703 24146262 Extn. 543	B1/20, BEST Off. Qtrs. Devidayal Rd. Mulund (W), Mum 400 080	8850067337	In-Charge of Customer Care G / South Ward
				Email id : deccgsward@bestundertaking.com			
33.	Bansode P.K.	DECC (SIMHA)	Wadala	24157813 24190606 24146262 Extn. 606	43/103, Devratna Ngr, Swadeshi Mill Comp. Chunabhatti, Mumbai 022	24054421, 9004210369	In-Charge of Customer Care Simha Dept.
				Email id : deccsimha@bestundertaking.com			
34.	Adlinge S. S.	DEMR	Wadala	24186353 24146262 Extn. 571 24194571 24186353 Extn. 590	12 B / 7, 1 st Flr., Shivner Vasahat Marg, near PMGP Colony, Majaswadi , Mumbai 054	9869289810	In-Charge of Customer Care Meters Dept.
				Email id : demr@bestundertaking.com			
35.	Sontakke S.P.	DEHVC	Tardeo	7304456095	304, Shivparvati CHS, Sec 2, Plot no. 9, Sanpada, Navi Mumbai, 705	9892141565	In-Charge of High Value Consumers Dept.
				Email id : deea@bestundertaking.com			
36.	Gaikwad S .Y.	DESL (M)	Kussara	23781839 8097584834	1-A, Ram Apt. Pandurang wadi, R. No. 4, Goregaon, Mum- 065	9869220798	In-Charge of Street Lighting Maintenance Dept.
				Email id : deslm@bestundertaking.com			

37.	Pardeshi S.V.	DET&E	Tardeo	23090036 23026801	Flat No.2,Flr, BEST Officers' Qtrs., Sion Fort, SionRd. no.1, M- 22	9869043987	In-Charge of Telecommunicatio n & Electronics Dept.
Email id : dete@bestundertaking.com							
38.	Daware M.K.	DEPRO/ DECGRF	Veej Bhavan	22822080 7208975906	R.N. 142, 14 th flr Multistory Bldg, Electric House , Colaba, Mumbai 1	9833082803	In-Charge of Project Dept & CGRF
Email id : depro@bestundertaking.com							
39.	Kulkarni S.P.	DEMTS	Kussara	23719753 8097584823	F 602, Rail Nagar, CHS Vazira Naka ,Chandavark ar Road, Borivali- west, Mum 91	9869246017	In-Charge of Material Testing & Standard Dept.
Email id : demts@bestundertaking.com							
40.	Chougule S.D.	DEPL (M)	Veej Bhavan	22811254 7208972462	E/2/15, Geetanjali CHS, Sector- 46, Seewood, Nerul-W, Navi Mumbai 706	8291206661	In-Charge of Planning (Materials) Dept.
Email id : deplm@bestundertaking.com							
41.	Khadke Y.N.	DEPL (N)	Veej Bhavan	22880950 7208972451	11/2,BEST Officers Quarters, Plot no.56,Gorai Road, Borivali- W, Mumbai 92	9869401952	In-Charge of Planning Network (South & North) Dept.
Email id : deplns@bestundertaking.com : depnet@bestundertaking.com							
42.	Rane M.M.	DE (PM)	Colaba	22880950 7208972451	1203, Rachana Garden Primrose CHS.Guru Govind Sing Marg, Mulund West Mumbai 014	9869396701 8879808046	In-Charge of Power Management Dept.
Email id : depower@bestundertaking.com							
43.	Jadhav S.A.	DE (PP)	Colaba	22856262 Extn. 555	OQ-A2/27, 6 th floor, BEST Officer Quarters , Pant Nagar, Ghatkoper –E, Mumbai- 400075	9869268057	In-Charge of Renewable Power Procurement Dept.
Email id : depp@bestundertaking.com							

44.	Desai U. N.	DE VIG (N)	Wadala	24172725	H11/202, Palm Acres CHSL,Mhad a Colony, Pratiksha Nagar Sion East Mumbai	9869029847	In-Charge of Vigilance (North) Dept.
Email id : devignorth@bestundertaking.com							
46.	Shaikh M.M.	DE VIG (S)	Colaba		503-A, Aman apt. Hall Pakhadi Road, Christian Village, Kurla -W, Mumbai- 400070	9820236483	In-Charge of Vigilance (South) Dept.
Email id : devigsouth@bestundertaking.com							
46.	Ezzy S. K.	DETIE	Mumbai Central	23077670 23097698 7208836170	48/1 A, Shaad Residency, 19th flr., Flat no. 1904, E.S. Patanwala Rd.,Opp. Veer Mumbai 027	9820039955	In-Charge of TIE Dept.
Email id : detie@bestundertaking.com							

ANNEXURE VIII

ADDRESS & PHONE NOS OF RECEIVING SUB-STATIONS

Sr. No.	Name of Existing RSS	Address	Telephone Nos.
1.	APOLLO	B.E.S. & T. Undertaking, Apollo RSS Near Lion Gate, Shahid Bhagat Singh Rd. Mumbai 400 001.	22843650, 7208964243
2.	BYCULLA	B.E.S. & T. Undertaking, Byculla RSS Opp. Mafatlal Mill Gate No.2, Junction of E.S. Patanwalla Marg, Mumbai 400 027.	23723339, 7208964366
3.	BALLARD ESTATE	B.E.S. & T. Undertaking, Ballard Estate RSS Opp. New Custom Office, Shoorji Vallabhdas Rd. Mumbai 400 038.	22661696, 7208964244
4.	COLABA	B.E.S. & T. Undertaking, Colaba RSS, Colaba Bus Stn. Opp. Graduate Womens Hostel, Mumbai 400 005.	22150070, 7208964109
5.	DHARAVI	B.E.S. & T. Undertaking, Dharavi RSS Matunga Labour Camp, Near MSEB Office, Mumbai 400 019	24072793 7208969019
6.	ESPLANADE	B.E.S. & T. Undertaking, Esplanade RSS Opp. BEST Vidyut Bldg, Pathakwadi Lane, Off. Lokmanya Tilak Rd. Mumbai 400 002.	22087767, 7208964249
7.	GRANT ROAD	B.E.S. & T. Undertaking, Grant Road RSS Khetwadi 10th Lane, Nr Alfred Cinema, Mumbai 400 004	23824892, 7208964351
8.	KUSSARA	B.E.S. & T. Undertaking, Kussara RSS, Near Bijlee Bhavan, Opp. Mazgaon Dock, Kussara Bunder Rd, Mumbai- 400 010	3726398, 7208964364
9.	KINGSWAY	B.E.S. & T. Undertaking, Kingsway RSS BEST Workshop Gate No.2, Tilak Rd., Dadar T.T. Mumbai 400 014	24126637, 7208969014
10.	GIRGAUM	B.E.S. & T. Undertaking, Girgaum RSS Zaobawadi, Ram Mandir Jagannath Shanker Sheth Rd. Girgaum, Mumbai 400 004.	22016475, 7208964252
11.	MAHALAXMI	B.E.S. & T. Undertaking, Mahalaxmi RSS Near Sant Gadge Maharaj Chowk, (Saat Rasta), Sane Guruji Marg, Mumbai 400 011	23087229, 7208964367
12.	MAHIM	B.E.S. & T. Undertaking, Mahim RSS Near Amar Hind Mahal, Gokhale Road (N), Dadar (W), Mumbai 400 028.	24223484 7208969013
13.	MALBAR HILL	B.E.S. & T. Undertaking, Malabar Hill RSS Near Uphar Bldg. New Siri Road, Chiranjilal Loyalka Marg Mumbai 400 006.	23674865, 7208964352

14.	LOVE GROVE	B.E.S. & T. Undertaking, Love Grove RSS Love Grove Pumping Stn.,(MCGM) Dr. Annie Besant Rd. Worli,Mumbai 400 025.	24934567, 7208964368
15.	PAREL	B.E.S. & T. Undertaking, Parel RSS BEST Officers Qtrs. Next to BMCSchool, Saibaba Rd. Mumabi 400 012.	24715839, 7208969010
16.	BACKBAY 110KV	B.E.S. & T. Undertaking, Backbay 110kV RSS Backbay Veej Bhavan General Bhonsle Marg Mumbai 400 021.	22880948, 22843463 7208964102
17.	WADALA	B.E.S. & T. Undertaking, Wadala RSS near BMC Salt Pan Ppg. Stn., Opp. Block No.212, C.G.S. Colony, Sector II,Antop Hill, Wadala(E), Mumbai 400 037.	24013716, 7208969015
18.	WORLI	B.E.S. & T. Undertaking, Worli RSS Opp. Goodlas Nerolac Paint, Ganpatrao Kadam Marg, Mumbai 400 018.	24923853 7208964369
19.	MARINE DRIVE	B.E.S. & T. Undertaking, Marine Drive RSS Near Marine Drive Plaza Hotel,Behind Yashodhan Bldg. Dinshaw WachaRd., Mumbai 400 004.	22027617, 7208964247
20.	PRABHADEVI	B.E.S. & T. Undertaking, Prabhadevi RSS Opp.Passport Office, J.B. Temkar Marg,Worli, Mumbai 400 025.	24228367, 7208964371
21.	HUTATMA CHOWK	B.E.S. & T. Undertaking, Hutatma Chowk RSS Janmabhoomi Marg, Off.Dr. D.N. Rd Hutatma Chowk, Fort Mumbai 400 001.	22024673, 7208964245
22.	NARIMAN POINT 110 KV	B.E.S. & T. Undertaking, Nariman Point110Kv RSS Sakhar Bhavan, Ramnath Goyanka Marg Behind Oberoi Hotel, Nariman Point Mumbai 400 021.	22045011, 22044636 7208964103
23.	NAVAL DOCKYARD	B.E.S. & T. Undertaking, Naval Dockyard RSS Naval Dockyard – M.R.S.S. Premises of Indian Navy, Lion GateShahid Bhagat Singh, Colaba Mumbai 00 023.	22665597, 7208964242
24.	BOMBAY CENTRAL	B.E.S. & T. Undertaking, Bombay Central RSS, Potia Estate, Mumbai Central Bus Depot Bellasis Rd Mumbai 400 008.	23098439, 7208964355
25.	CUMBALLA HILL	B.E.S. & T. Undertaking, Cumballa Hill RSS, Opp. Neelamber Bldg. Altamount Rd., Cumballa Hill Mumbai 400 026.	23511317, 7208964353
26.	SITLADEVI	B.E.S. & T. Undertaking, Sitladevi RSS Prakash Narayan Kotnis Marg,Off. Lady Jamshedji Rd., Mahim Mumbai 400 016.	24461089 7208969017
27.	WORLI DAIRY	B.E.S. & T. Undertaking,Worli Dairy RSS Near Manav Mandir Bldg.Acharya Atre Marg, Worli, Mumbai 400 018.	24920054, 7208964370

28.	KHETWADI 110 KV	B.E.S. & T. Undertaking, Khetwadi 110kV RSS Khetwadi 10th Lane, Alfred Cinema Mumbai 400 004.	23853698, 3853683 23859417, 7208964104
29.	MAHIM CAUSEWAY	B.E.S. & T. Undertaking, Mahim Causway RSS 1504, Near BMC Sewage Pumping Stn., Mahim Reclamation, Mahim Causway Rd., Mumbai 400 016.	24461082 7208969018
30.	RAOLI HILL	B.E.S. & T. Undertaking, Raoli Hill RSS Premises of Raoli Hill Pumping Kokari Agar Rd., Antop Hill, Mumbai - 400 037.	24036639, 7208969021
31.	MASJID	B.E.S. & T. Undertaking, Masjid RSS Ibrahim Merchant Rd. Khadak Street, Mumbai - 400 009.	23455259 7208964250
32.	SION FORT	B.E.S. & T. Undertaking, Sion Fort RSS Opp. BMC School Sixteen Bunglow, Sion (E) Mumbai - 400 022.	24076096, 7208969022
33.	MUMBADEVI	B.E.S. & T. Undertaking, Mumbadevi RSS Off. Kalbadevi Rd. Inside Mumbadevi BMC Compound, Near Mumbadevi Temple, Mumbai - 400 002.	22421071 7208964251
34.	SEWREE	B.E.S. & T. Undertaking, Sewree RSS Prabodhankar Thakre Udyan Bus Stn. Acharya Donde Marg, Sewree, Mumbai - 400 015.	24129336, 7208969012
35.	G.T. HOSPITAL	B.E.S. & T. Undertaking, G.T. Hospital RSS, G.T. Hospital Compound, Badruddin Tayyabji Marg Opp. C.I.D. Office Mumbai 400 001.	22672350, 7208964246
36.	NEPEAN SEA	B.E.S. & T. Undertaking, Nepean Sea RSS Opp. Simla House, Near Godrej Baug, Off. Nepean Sea Rd Mumbai 400 036.	23677302, 7208964354
37.	DHARAVI PMGP	B.E.S. & T. Undertaking, Dharavi PMGP- 501 RSS Plot No. 501, Shatabdi Nagar Lane Behind Shivaji Vidyalaya Gate, Dharavi – Mumbai - 400 017.	24078807, 7208969020
38.	NAIR HOSPITAL	B.E.S. & T. Undertaking, Nair Hosp. RSS Behind Nurses Qtrs. Nair Hospital Premises, Dr. Anandrao L. Nair Rd., Mumbai 400 008.	23011057, 7208964363
39.	DR. BABASAHEB AMBEDKAR 110KV	B.E.S. & T. Undertaking, Dr. Baba Saheb Ambedkar 110 KV RSS Senapati Bapat Marg, near Ambika Mill Bus, Mumbai - 400 013	24955083, 24955084 7208969029
40.	KEM HOSPITAL	B.E.S. & T. Undertaking, KEM Hosp. RSS KEM Hospital Complex, S. S. Rao Road, Mumbai 400 012.	24157076, 7208969011
41.	NESTLE	B.E.S. & T. Undertaking, Nestle RSS Nestle Compound, Near Bombay Dyeing Mill, Pandurang Budkar Marg, Mumbai 400 013.	24334629, 7208964372

42.	NAVY NAGAR	B.E.S. & T. Undertaking, Navy Nagar RSS Near Kendriya Vidyalaya, Navy Nagar Mumbai 400 001.	22189000, 7208964105
43.	POCHKHANWALA ROAD	B.E.S. & T. Undertaking, Pochkanwala Rd. RSS,Plot no.-78 & 78APolice Constabulary Staff Qrts., Pochkhanwala Rd, Worli , Mumbai 400 018.	24974517 7208969319
44.	J.J. HOSPITAL	B.E.S. & T. Undertaking, J.J. Hospital RSS, J.J. Hospital premises, Ramchandra BhattMarg, Byculla, Mumbai 400 009.	23726431, 7208969030
45.	MAZAGAON DOCK	B.E.S. & T. Undertaking, Mazagaon Dock RSS Resident Area,Opp. Angre House, Gate No.1, Dockyard Rd., Mazgaon, Mumbai 400 010.	23781444, 7208964365
46.	TARDEO	B.E.S. & T. Undertaking, Tardeo RSS Pandey Compound bus Stn.,Naik Chowk Tardeo, Mumbai 400 009	23523773, 7208969023
47.	LALBAUG	B.E.S. & T. Undertaking, Lalbaug RSS Dattatraya Mahadev, Khamkar Marg, Lalbaug, Mumbai 400 12.	24713722, 7208969025
48.	STANDARD MILL	B.E.S. & T. Undertaking, Standard Mill RSS, Appasaheb MaratheMarg, Prabhadevi, Mumbai 400 025.	24365264 7208969024
49.	V.S.N.L.	B.E.S.T. Undertaking ,VSNL RSS Plot No – 1195 CS No. 77, Opp. Kirti College , K Dhuru MargPrabhadevi Mumbai 400028	24313646 7208969317
50.	SWAN MILLS (Sewree)	B.E.S. & T. Undertaking, Ashok garden (formely Swan Mill) TokersiJivraj Marg, Sewree, Mumbai 400 015.	24188120, 7208969316
51.	NIMKAR MARG	B.E.S. & T. Undertaking, Nimkar Marg, 33kV RSS Near Navjeevan Co.Op.Hsg.Soc.,R.S.Nimkar Marg, TardeoDepot, Mumbai- 400 008.	23010339, 7208969026
52.	SIMPLEX MILL	B.E.S. & T. Undertaking, Simplex Mill RSS Godrej planet keshavraokhadye Marg, Byculla, Mumbai- 400 011	23020440 7208969027
52.	ELPHINSTONE MILL	B.E.S. & T. Undertaking, Elphinstone 33kv RSS, India Bulls financeCorp., Senapati Bapat marg, Mumbai 400 013.	24338111 7208969318
54.	MAZAGAON SHIPYARD NORTH	B.E.S. & T. Undertaking, Mazgaon Morlernisation Project, Dockyard, Mazgaon Mumbai 400 010.	HT Consumer
55.	APOLLO MILL	B.E.S. & T. Undertaking, Apollo Mill RSS, Lodha Primerio,N.M.Joshi Marg, Chinchpokli (E) Mumbai-40011.	24188120, 7208969316

56.	MORARJEE MILL	B.E.S. & T. Undertaking, Morarjee Mill 33 kv DSS Ashoka Tower (Centre Point) Dr. B.A. Road, Parel Mumbai 400012.	23010339, 7208969026
57.	FUTUREX 33 KV RSS	B.E.S. & T. Undertaking, Futurex 33 kv RSS N.M.Joshi Marg, LowerParel Mumbai 400013.	23020440 7208969027
58.	PENINSULA LAND	B.E.S. & T. Undertaking, Peninsula 33 kv RSS. Ganpatrao KadamMarg, Lower Parel, Mumbai 400013.	24338111 7208969318
59.	JALAN MILL	B.E.S. & T. Undertaking, Ganpatrao Kadam Marg, Lower Parel, Mumbai- 400013.	HT Consumer
60.	NAMAN MID - TOWN 33 KV DSS	B.E.S. & T. Undertaking, Behind kamgar krida Bhavan, Senapati Bapat Marg, Mumbai 400028.	24188120, 7208969316
61.	AVIGHNA 33 KV DSS	B.E.S. & T. Undertaking, NewIslam mill compound Mahadeo Palav marg, Mumbai 400012.	23010339, 7208969026
62.	MAZGAON SHIP YARD RSS	B.E.S. & T. Undertaking, In the premises of Mazgaon Dock Ltd., South Yard, City Survey No. 247, Kussara Bunder, Mazgaon Dock, Mumbai – 400 010	23020440 7208969027
63.	PRATIKSHA NAGAR	B.E.S. & T. Undertaking, Plot / CS no. 4 (Pt), In front of Mala Garden, Pratiksha Nagar, Sion Mumbai-400 022	24338111 7208969318
64.	LODHA CROWN T-6	B.E.S.&T. Undertaking, New Cuffe Parade, In premises of Lodha Crown Building Pvt. Ltd. Building C, Wadala Truck Terminal, Anik Wadala Road, Mumbai - 400 37	HT Consumer
65.	ANTOP TERMINUS	B.E.S.T. Undertaking In the premises of Antop Hill Bus Terminus, Wadala East , Mumbai 400 037	

WARD WISE IDENTIFIED LOW LAYING FLOODING PRONE AREAS

Sr. No.	Ward	Name of Road	Location
	A	Geeta Nagar	--
1		Opp. Church	Near E.P. GNP-7
2		Near E.P. No. GNP/9	--
3		Opp. Geeta Nagar Library	Near E.P. GNP/29
4		Near Geeta Nagar School	Near E.P. No. GNP/35
		Ambedkar Punarvasan	--
5		Shri Sonu Kamble	Galli No. 3
6		Shri Sangram Suryavanshi	Galli No. 4
7		Near Saibaba Temple	--
		Ganesh Murti Nagar	Near opp. MP 501, 503 & 504
8	Shri Ratilal Sharma	Galli No. 3	
9	Near Nagori Garib Nawaz Milk Center	Galli No. 5	
10	B	Meisheri Road	Opp. Sandhurst Road Station (Nityanand Hotel)
11		Chinch Bunder B.I.T. Chawl	Chawl No. 5, 6, 7, 8
12		Mohammed Ali Road	Sydneham Compound
13	C	S.V.P. Road	Between Moli Talkies & Mirza Ghalib Market
14		C.P. Tank	Yagnik Chowk towards V.P. Road
15		Maulana Azad Road	Gol Temple to Yagnik Chowk
16		Eraskin Road	Yagnik Chowk to rear of Mirza Ghalib Market
17		Mitrasen Mahimtura Marg	Full Road
18		Sant Sena Marg	Full Road
19		Trimbak Parshuram Road	Full Road
20		Durgadevi Road	Joint of Trimbak Parshuram Road to Jn. of Mitrasen Mahimtura Marg
21	D	Petit Hall	Nepean Sea Road
22		Kashinath Compound	Nepean Sea Road
23		Oomer Park	Bhulabhai Desai Road
24		Breach Candy Hospital	Bhulabhai Desai Road
25		Nana Chowk	Nana Chowk Junction
26		Tardeo Circle	Tardeo Circle
27		Hotel Drum Beat	Tardeo Road
28		Grant Road Railway Station	Sleater Road
29		Band Stand, Chowpatty	Babulnath Road
30		Grant Road Railway Station (West)	Near Sonawala Bldg.
31		Alankar Cinema Junction	S.V.P. Road
32		Khetwadi Area, Khetwadi Back Road	R.R. Road
33		R.S. Nimkar Marg	--
34		Pande Girls High School	Pathe Bapurao Bridge Low Level
35		Crystal Hotel	Gilder Lane

36	E	J.J. Road	Opp. Police Station	
37		Palace Cinema	--	
38		T.B. Kadam Marg	Junction of B.A. Road	
39		Dattaram Lad Marg	Junction of B.A. Road	
40		Br. Nathpai Road	Albery Chowk	
41		Sant Savata Low Level	--	
42		Shravan Yashwante Chowk	Kalachowky	
43		Shravan Yashwante Chowk	Kalachowky	
44		Motisha Lane	Opp. Byculla Police Station	
45		Hindustan Masjid	Byculla	
46		Sankli Street	Jn. II & III Sankli Street	
47		Nair Road	Agripada Police Station	
48		Maratha Mandir Road	Bombay Central	
49		Belasis Road	Alexandra Cinema	
50		Chinchpokali Railway Station	--	
51		F/S	Hindmata Cinema	Dr. B.A. Road
52			Jagannath Dhatankar Marg	--
53			Dattaram Khamkar Marg	--
54			Kalachowky near Sardar Hotel	Dr. B.A. Road
55			Zakeria Bunder	Cross Gully
56	Vitthal Chavan Marg		--	
57	Dadasaheb Phalke Road		--	
58	R.A. Kidwai Road		Junction Road No. 26	
59	Sewree Cross Road, Gate No. 7		--	
60	F/N	Laxmibai Kelkar Rd (Gandhi Market)	--	
61		R.A. Kidwai Road, Wadala	Gate No. 4, Mangale Society	
62		Dadar T.T. Circle	Junction of Tilak Rd & Jama Jamshet Rd	
63		Vachharaj Lane	--	
64		Mukhyadhapak Bhavan Rd No.6, Sion	--	
65		Rajyogi Jaimai Singh Road	Gurunanak School	
66		Bhau Daji Road (below bridge)	--	
67		Hindu Colony, Lakhamshi NapooRd.	--	
68		Road No. 16, Near LeprosyHospital		
69		Jayshankar Yagnik Road	Behind Gandhi Market	
70		Shanti Nagar Slum	--	
71		Koraba Mithagar Slum	--	
72	G/S	N.M. Joshi Marg	Jagusheth Chawl , near curry road west JN	
73		Fitwala Road	Nr. Elphiston Rd Rly Stn	
74		Balushet Madurkar Marg	--	
75		N.M. Joshi Marg	Gawade Chowk to Railway Workshop	
76		Sakhubai Mohite Marg	N.M. Joshi Marg, B.D.D. Chawls	
77		Pandurang Budhkar Marg	Near Gopal Nagar	
78		Worli Naka	Near Prem Nagar	

79		S.S. Amritwar Marg	Near Nehru Nagar
80		Khan Abdul Gaffar Khan Road	Near Godrej
81	G/N	T.H. Kataria Marg (East)	--
82		Veer Savarkar & L.J. Road Junction	Near Mahim Church
83		M.G Rd., Dharavi	Dharavi transit camp, Laxmibaug
84		Andhra valley Rd.	Matunga labour camp.

The reporting protocol for interruption of Electric supply due to
System Failure /Disaster

Sr. No.	Nature of Off Supply/Disaster	Informing person	To be informed	Remark
1.	Off supply due to service cut out burnt, service failure, individual Off Supply, Partial Area/ Area off supply due to distributor/ service cable failure, 11/22/33 kV feeder tripping.	Fuse Controller, Fault Controller, Supervisory/ System controller	Regular Off Supply crew i.e. Fuseman, Mains Engineer & Fault Engineer.	Immediate action for restoration of supply by all concerned.
2.	Off supply after 2 hrs. Upto 4 hrs due to service cut out burnt, service failure, individual Off Supply, Partial Area/ Area off supply due to distributor/ service cable failure, 11/22/33 kV feeder tripping.	Supervisory/ System controller	Concerned Divisional Engineers and above.	Concerned Divisional Engineer will post the details on VIP Whatsapp Group.
3.	Off supply above 4 hrs due to service cut out burnt, service failure, individual Off Supply, Partial Area/ Area off supply due to distributor /service cable failure, 11/22/33 kV feeder tripping.	CEM	AGMES, DGMES.	Concerned Divisional Engineer will post the details on VIP Whatsapp Group.
4.	Switching OFF DSS due to water logging/ flooding for safety measures.	CEM	AGMES, DGMES, GM	Concerned Divisional Engineer will post the details on VIP Whatsapp Group.

5.	Building collapse / Fire to building / Fatal/ Non-Fatal electrical accident.	Supervisory/ System controller	Concerned Divisional Engineers and above.	Concerned Divisional Engineer will post the details on VIP Whatsapp Group.
6.	Building collapse / Fire to building / Fatal/ Non-Fatal electrical accident.	CEM	AGMES, DGMES, GM	Concerned Divisional Engineer will post the details on VIP Whatsapp Group.
7.	Major Off Supply due to multiple faults at one DSS / nearby DSSs resulting in DSS hanging.	Supervisory/ System controller	Concerned Divisional Engineers and above.	Concerned Divisional Engineer will post the details on VIP Whatsapp Group.
8.	Major Off Supply due to multiple faults at one DSS / nearby DSSs resulting in DSS hanging.	CEM	AGMES, DGMES, GM	Concerned Divisional Engineer will post the details on VIP Whatsapp Group.
9.	TPC failure /Grid failure / Off Supply for entire south/ north /entire Mumbai city due to any type of Disaster.	Supervisory/ System controller	Concerned Divisional Engineers and above.	Concerned Divisional Engineer will post the details on VIP Whatsapp Group.
10.	TPC failure /Grid failure / Off Supply for entire south/ north /entire Mumbai city due to any type of Disaster.	CEM	AGMES, DGMES, GM	Concerned Divisional Engineer will post the details on VIP Whatsapp Group.
11.	TPC failure /Grid failure / Off Supply for entire south/ north /entire Mumbai city due to any type of Disaster.	GM	Municipal Commissioner, Energy Minister, Chief Minister	Concerned Divisional Engineer will post the details on VIP Whatsapp Group.

**Names & Contact nos. of the Officers of Electric Supply Branch
to be contacted during the emergency / disastrous conditions
Operations & Maintenance Department (OFF supply)**

Name	Designation	Coverage Area	Contact no.	Mobile No. / Resi. No. / Email id.
Chougule N.N.	Chief Engineer (Maintenance & Work)	HOD for off supply Complaints for Mumbai City	22840942 22856262 Extn. 502	9969324485
			cem@bestunderking.com	
Fulpagare S.V.	Deputy Chief Engineer Distribution South	For Mumbai City (South Division) Off Supply Complaints	22154428 22153486 Ext. 102	9869870154
			dceds@bestunderking.com	
Bansode S.S.	Deputy Chief Engineer Distribution North	For Mumbai City (North Division) Off Supply Complaints	24102929	9869407196
			dcedn@bestunderking.com	
Kamble M.S.	Divisional Engineer Operation & Maintenance Central North	Byculla, Lalbaug, Mazgaon, Reay Road, Haji Ali, Worlgaon, Lower Parel, Mahalaxmi, Mumbai Central, Aurthur Road	24121740 24120301	9757092063
			demen@bestunderking.com	
Gunjal P.D.	Divisional Engineer Operation & Maintenance North East	Parel, Kalachowki, Dadar, Kings Circle, Wadala, Antop Hill, Gandhi Market, Sion-Chunabhatti	24016611 24012951	7710008156
			demne@bestunderking.com	
Deshmukh D.S.	Divisional Engineer Operation & Maintenance North West	Prabhadevi, Parel ST depot, Kabutar Khana, Shivaji Park, Shitaladevi, Mumbai Causeway, Dharavi, Matunga	24120301	9969007861
			demn@bestunderking.com	
Vacant	Divisional Engineer Operation & Maintenance South	Navy Nagar, Nariman Point, Backbay, Marine Lines, Colaba, Crawford Market	22154428	
			dems@bestunderking.com	
Narkhede P.S.	Divisional Engineer Operation & Maintenance Central South	Mo. Ali Rd., Girgaon, Mumbadevi, Malabar Hill, Neapeansea Rd., Grant Rd., Khetwadi, Dockyard Rd., Nagpada	22073875	7506000722
			demcs@bestunderking.com	

**Name & Contact nos. of the Officers
Of Electric Supply Branch to be contacted during the emergency / disastrous conditions**

Customer Care Department (Complaints)

Name	Designation	Coverage Area	Contact no.	Mobile No. / Resi. No. / Email id.
Chandankar G.G.	Chief Engineer Customer Care	A, B, C, D E, FN, FS, GN & GS Wards	22799563	9757435560
			cecc@bestundertaking.com	
Chandankar G.G.	Deputy Chief Engineer Customer Care South	A,B,C & D Wards	22799512 228556262 Ext. no. 503	9757435560
			dceccs@bestunderking.com	
Talegaonkar A.R.	Deputy Chief Engineer Customer Care North	E, FN, FS, GN & GS Wards	24194681 24146262 Ext. 681	9819065801
			dceccne@bestunderking.com dceccnw@bestunderking.com	

Street Lighting Department (Complaints)

Chavan S.R.	Deputy Chief Engineer Street Lighting	A, B, C, D E, FN, FS, GN & GS Wards	24116023 Ext. 503	9819908070
			dcesl@bestundertaking.com	
Gaikawad S.Y.	Divisional Engineer Street Lighting (Maintenance)	A, B, C, D E, FN, FS, GN & GS Wards	24101691 24123969 Ext. 501 23781839 23711942 Ext. 801	9869220798
			deslm@bestundertaking.com deslm@bestundertaking.com	